



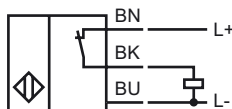
Model Number

NBB1,5-F41A-E3

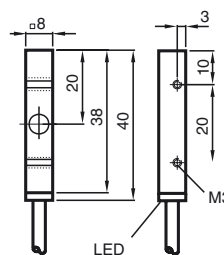
Features

- 1.5 mm embeddable
- 3-wire DC
- Metal housing

Connection



Dimensions



Technical Data

General specifications

Switching element function		PNP	NC
Rated operating distance	s_n	1.5 mm	
Installation		embeddable	
Output polarity		switched high	
Assured operating distance	s_a	0 ... 1.215 mm	
Reduction factor r_{AI}		0.45	
Reduction factor r_{Cu}		0.35	
Reduction factor r_{304}		0.75	

Nominal ratings

Operating voltage	U_B	10 ... 30 V DC	
Switching frequency	f	0 ... 1500 Hz	
Hysteresis	H	typ. 3 %	
Reverse polarity protected		reverse polarity protected	
Short-circuit protection		pulsing	
Voltage drop	U_d	≤ 3 V	
Operating current	I_L	0 ... 100 mA	
Off-state current	I_r	0 ... 0.5 mA typ.	
No-load supply current	I_0	≤ 15 mA	
Indication of the switching state		LED, yellow	

Ambient conditions

Ambient temperature		-25 ... 70 °C (-13 ... 158 °F)
---------------------	--	--------------------------------

Mechanical specifications

Connection type	cable PVC, 2 m
Core cross-section	0.14 mm ²
Housing material	brass, nickel-plated
Sensing face	PBT
Protection degree	IP67
Mass	13.5 g

Compliance with standards and directives

Standard conformity	
Standards	EN 60947-5-2:2007 IEC 60947-5-2:2007

Approvals and certificates

UL approval	cULus Listed, General Purpose
CSA approval	cCSAus Listed, General Purpose
CCC approval	Products with a maximum operating voltage of ≤ 36 V do not bear a CCC marking because they do not require approval.