



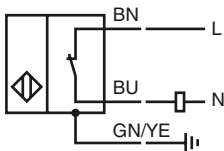
### Model Number

NBB2-12GM60-WO

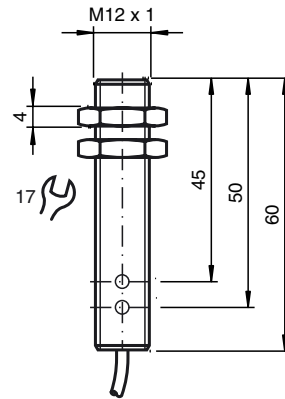
### Features

- 2 mm flush
- 2-wire AC

### Connection



## Dimensions



## Technical Data

### General specifications

Switching element function		AC	NC
Rated operating distance	$s_n$	2 mm	
Installation		flush	
Output polarity		AC	
Assured operating distance	$s_a$	0 ... 1.62 mm	
Reduction factor $r_{AI}$		0.5	
Reduction factor $r_{Cu}$		0.4	
Reduction factor $r_{304}$		0.8	

### Nominal ratings

Operating voltage	$U_B$	20 ... 150 V
Switching frequency	$f$	0 ... 25 Hz
Hysteresis	$H$	3 ... 15 typ. 5 %
Reverse polarity protection		tolerant
Voltage drop	$U_d$	$\leq 5$ V
Momentary current (20 ms, 0.1 Hz)		0 ... 1700 mA
Operating current	$I_L$	5 ... 200 mA
Off-state current	$I_r$	0 ... 1.7 mA typ.
Time delay before availability	$t_v$	$\leq 20$ ms
Operating voltage display		LED, green
Indication of the switching state		LED, yellow

### Ambient conditions

Ambient temperature	-25 ... 70 °C (-13 ... 158 °F)
---------------------	--------------------------------

### Mechanical specifications

Connection type	cable PVC, 2 mm
Core cross-section	0.34 mm <sup>2</sup>
Cable diameter	4.6 mm
Housing material	brass, nickel-plated
Sensing face	PBT
Protection degree	IP67
Mass	125 g
Note	1) In the temperature range below 0 °C, permissible operating voltage $U_B$ 80...253 V Safety fuse $\leq 0.3$ A (quick-blow) according to IEC 60127-2 Sheet 1 Recommendation: after a short circuit, check that the device is functioning correctly.

### General information

Scope of delivery	2 self locking nuts in scope of delivery
-------------------	--

### Compliance with standards and directives

Standard conformity	
Standards	EN 60947-5-2:2007 IEC 60947-5-2:2007

### Approvals and certificates

UL approval	cULus Listed, General Purpose
CSA approval	cCSAus Listed, General Purpose