



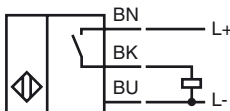
Model Number

NBN10-F10-E2

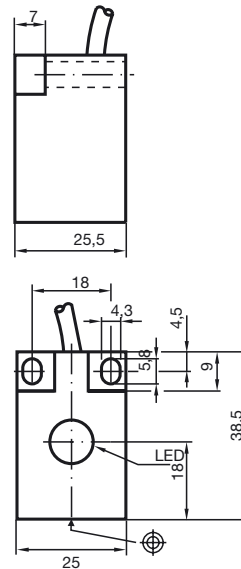
Features

- 10 mm not embeddable
- 3-wire DC

Connection



Dimensions



Technical Data

General specifications

| | | |
|----------------------------|----------------|--------------|
| Switching element function | PNP | NO |
| Rated operating distance | s_n | 10 mm |
| Installation | not embeddable | |
| Output polarity | DC | |
| Assured operating distance | s_a | 0 ... 8.1 mm |
| Reduction factor r_{AI} | 0.3 | |
| Reduction factor r_{Cu} | 0.2 | |
| Reduction factor r_{304} | 0.6 | |

Nominal ratings

| | | |
|-----------------------------------|----------------------------|--|
| Operating voltage | U_B | 10 ... 30 V DC |
| Switching frequency | f | 0 ... 500 Hz |
| Hysteresis | H | typ. 5% |
| Reverse polarity protected | reverse polarity protected | |
| Short-circuit protection | pulsing | |
| Voltage drop | U_d | ≤ 3 V |
| Operating current | I_L | 0 ... 150 mA |
| Off-state current | I_r | 0 ... 0.5 mA typ. 0.1 μ A at 25 °C |
| No-load supply current | I_0 | ≤ 15 mA |
| Indication of the switching state | LED, yellow | |

Functional safety related parameters

| | |
|--------------------------|--------|
| MTTF _d | 3390 a |
| Mission Time (T_M) | 20 a |
| Diagnostic Coverage (DC) | 0 % |

Ambient conditions

| | |
|---------------------|--------------------------------|
| Ambient temperature | -25 ... 70 °C (-13 ... 158 °F) |
|---------------------|--------------------------------|

Mechanical specifications

| | |
|--------------------|----------------------|
| Connection type | cable PVC , 2 m |
| Core cross-section | 0.34 mm ² |
| Housing material | PBT |
| Sensing face | PBT |
| Protection degree | IP67 |

Compliance with standards and directives

| | |
|---------------------|---|
| Standard conformity | |
| Standards | EN 60947-5-2:2007 IEC 60947-5-2:2007 |

Approvals and certificates

| | |
|--------------|--|
| UL approval | cULus Listed, General Purpose |
| CSA approval | cCSAus Listed, General Purpose |
| CCC approval | Products with a maximum operating voltage of ≤ 36 V do not bear a CCC marking because they do not require approval. |