



CE

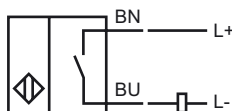
Model Number

NJ50-FP-Z-P1

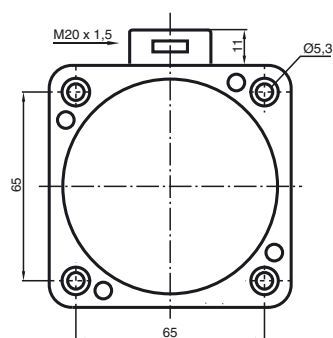
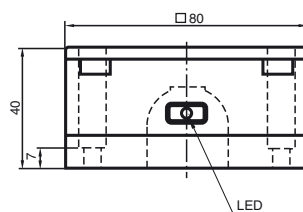
Features

- Comfort series

Connection



Dimensions



Technical Data

General specifications

Switching element function		DC	NO/NC
Rated operating distance	s_n	50 mm	
Installation		not embeddable	
Assured operating distance	s_a	0 ... 40.5 mm	
Reduction factor r_{Al}		0.4	
Reduction factor r_{Cu}		0.3	
Reduction factor r_{V2A}		0.85	

Nominal ratings

Operating voltage	U_B	10 ... 60 V
Switching frequency	f	0 ... 100 Hz
Hysteresis	H	typ. 5 %
Reverse polarity protected		tolerant
Short-circuit protection		no
Voltage drop	U_d	≤ 7 V
Operating current	I_L	5 ... 100 mA
Off-state current	I_r	0 ... 1 mA typ. 0.7 mA
Indication of the switching state		LED, yellow

Standard conformity

Standards	IEC / EN 60947-5-2:2004
-----------	-------------------------

Ambient conditions

Ambient temperature	-25 ... 70 °C (-13 ... 158 °F)
---------------------	--------------------------------

Mechanical specifications

Connection type	terminal compartment
Core cross-section	up to 2.5 mm ²
Housing material	PBT
Sensing face	PBT
Protection degree	IP67