



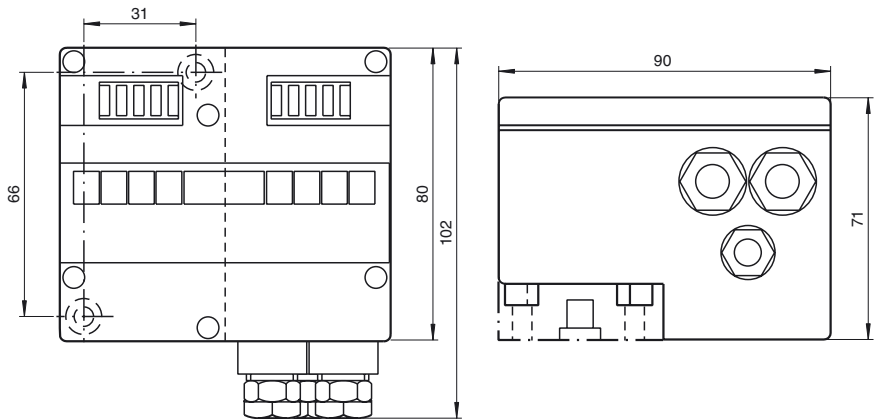
Model Number

VAM-CTR-G4F-R4
IP67 RS 485 field master

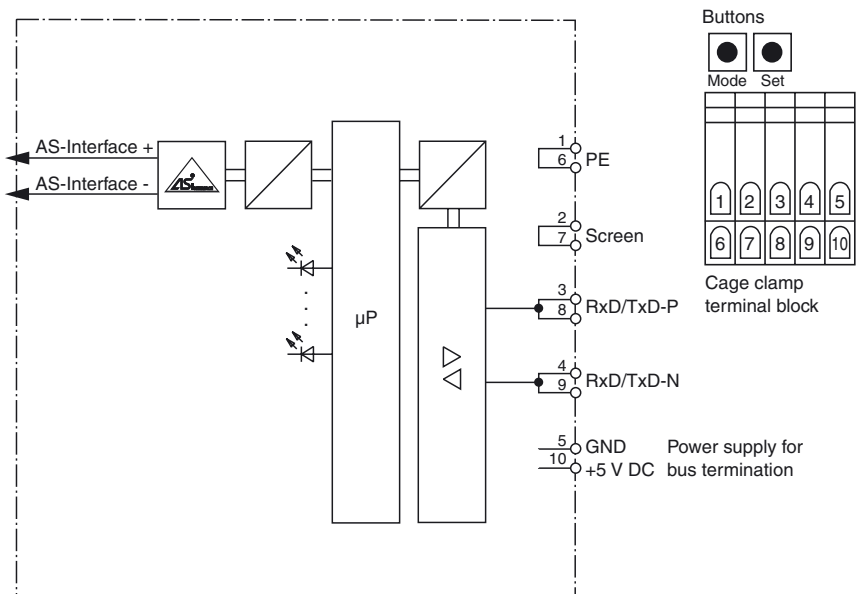
Features

- AS-Interface certificate
- Stand-alone master with PLC functionality
- Two-digit LED display
- Voltage supply from AS-Interface
- Automatic baud rate detection
- Programmable slave addresses
- Display of detected slaves
- Fault diagnosis
- Parameterisation and monitor software
- AS-Interface connection via flat cable and EMS standard bottom section (included delivery)
- RS 485 interface

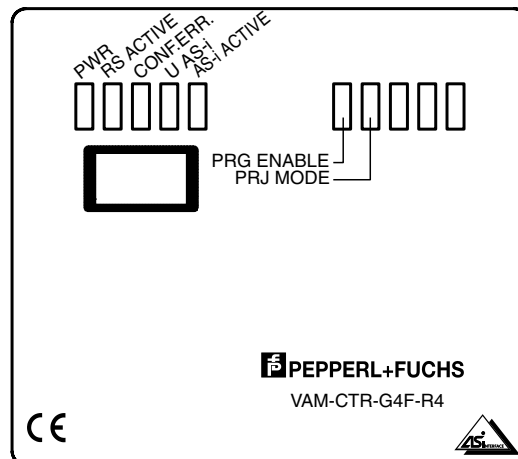
Dimensions



Electrical connection



Indicating / Operating means



Release date: 2007-07-30 09:46 Date of issue: 2007-07-30 04:3248_ENG.xml

Technical data**General specifications**

AS-Interface specification	V2.0
Diagnostics function	integrated

Indicators/operating means

Display	LED display, 2 digits, for addressing and error messages
LED AS-i ACTIVE	AS-Interface operation normal; LED green
LED RS ACTIVE	interface in operation; LED green
LED CONFIG ERR	configuration error; LED red
LED PWR	voltage ON; LED green
LED PRG ENABLE	autom. programming; LED green
LED PRG MODE	projecting mode active; LED yellow
LED U AS-i	AS-Interface voltage; LED green
Switch SET	Selection and setting of a slave address
Button MODE	Mode selection/save configuration

Electrical specifications

Insulation voltage	U_i	≥ 500 V
Rated operational voltage	U_e	from AS-Interface
Rated operational current	I_e	≤ 150 mA

Interface

Interface type	RS 485
Transfer rate	1200 , 2400 , 4800 , 9600 , 19200 , 38400 or 57600 Bit/s , Automatic baud rate detection

Connection

AS-Interface	cable piercing technique
RS 485 interface	Cable gland M16 x 1.5 and cage spring terminals

Ambient conditions

Ambient temperature	0 ... 55 °C (273 ... 328 K)
Storage temperature	-25 ... 85 °C (248 ... 358 K)

Mechanical specifications

Protection degree	IP65
Mass	420 g
Construction type	Plastic housing with cable gland

Compliance with standards and directives

Standard conformity	
Protection degree	EN 60529

Function

The VAM-CTR-G4F-R4 is a stand-alone master with PLC functionality and RS 485 interface for direct use in the field. In applications where the AS-Interface master must be mounted in a cabinet, valuable lengths of network cable are consumed in getting to the field.

The master can be either mounted on DIN rail according to EN 50022 or through the use of mounting holes on the gateway. The connection of the master to the AS-Interface flat cable is made through the standardized EMS interface. Power is supplied via the AS-Interface cable.

Two push buttons are used for address assignment of the AS-Interface slaves and acceptance of the desired configuration. In configuration mode, all detected AS-Interface slaves are displayed on the 2-digit LCD. In normal operation, the LCD is blank unless the master detects a faulty AS-Interface slave.

There are 7 LEDs on the front panel, showing the current status of the AS-Interface line.

The connection to the RS 485 Interface is established by means of a cable gland and cage tension spring terminals. The RS 485 interface allows for cable lengths of up to 1,200 m between the AS-Interface master and the host as well as multidropping up to 31 AS-Interface masters. Therefore, all 31 AS-Interface lines can be administered with one PLC or PC serial port.

PLC Functionality

The VAM-CTR-G4F-R4 provides 16 kByte program memory, 8 kByte RAM, 1024 counters and 1024 timers for PLC functionality. These capacities suffice to process data on the AS-Interface. Thus the master can also be operated in "stand-alone" mode. The program processing time is 2 ms per 1,000 word commands. The programming language is based upon the STEP5® programming language.

Software

The AS-i Control Tools software is supplied as restricted version together with the documentation. The software performs addressing, programming and monitoring of the AS-Interface network. In addition, it contains an editor that creates programs for the integrated PLC functionality. The full version of the AS-i Control Tool is available as an accessory and features an expanded diagnostics monitor as well as a larger program memory for AS-Interface Control which makes it possible to detect faulty telegrams of slaves.

Accessories**VAZ-SW-ACT32**

AS-Interface software

VAZ-G4-R4

Interface cable

VAZ-G4-B

Blind plug

U-G1P

AS-Interface module mounting base

U-G1F

base is included with delivery