



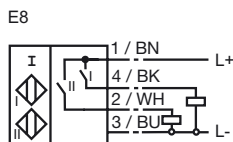
Model Number

NBN3-F25-E8-5M

Features

- For installation in housing
- Direct mounting on standard actuators
- Satisfies machinery directive

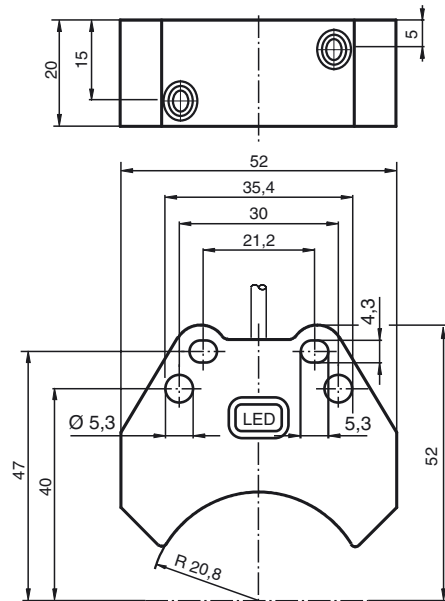
Connection



Accessories

- BT32**
Activator for F25 series
- BT32XS**
Activator for F25 series
- BT32XAS**
Activator for F25 series
- BT33**
Activator for F25 series
- BT34**
Activator for F25 series

Dimensions



Technical Data

General specifications

Switching element function	PNP	Dual NO
Rated operating distance	s_n	3 mm
Installation	flush mountable	
Output polarity	DC	
Assured operating distance	s_a	0 ... 2.43 mm
Reduction factor r_{Al}	0.5	
Reduction factor r_{Cu}	0.4	
Reduction factor r_{304}	1	
Reduction factor r_{St37}	1.1	

Nominal ratings

Operating voltage	U_B	10 ... 30 V DC
Switching frequency	f	0 ... 500 Hz
Hysteresis	H	typ. 5 %
Reverse polarity protected	all connections	
Short-circuit protection	pulsing	
Voltage drop	U_d	≤ 3 V
Operating current	I_L	0 ... 200 mA
Off-state current	I_r	0 ... 0.5 mA typ. 0.1 μ A at 25 °C
No-load supply current	I_0	≤ 25 mA
Operating voltage display	LED, green	
Indication of the switching state	LED, yellow	

Ambient conditions

Ambient temperature	-25 ... 70 °C (-13 ... 158 °F)
Storage temperature	-40 ... 85 °C (-40 ... 185 °F)

Mechanical specifications

Connection type	cable PVC , 5 m
Core cross-section	0.75 mm ²
Housing material	PBT
Sensing face	PBT
Protection degree	IP67
Tightening torque, fastening screws	M5 x 25 : 2.7 Nm
Note	Mounted on mechanical drive

Compliance with standards and directives

Standard conformity	
Standards	EN 60947-5-2:2007 IEC 60947-5-2:2007

Approvals and certificates

UL approval	cULus Listed, General Purpose
CSA approval	cCSAus Listed, General Purpose
CCC approval	Products with a maximum operating voltage of ≤ 36 V do not bear a CCC marking because they do not require approval.

Release date: 2012-07-11 14:43 Date of issue: 2012-07-11 04:1941_eng.xml