

OCS5000-F8-B3-V1

AS-Interface, retro-reflective sensor

OCS5000-F8-B3-V1

CE



- ◆ Polarisation filter
- ◆ Light/dark ON parameterisable
- ◆ Pre-fault indication and output
- ◆ Visible red light
- ◆ AS-Interface certificate
- ◆ Protection degree IP66
- ◆ Supplied with mounting accessory

Release date: 2007-06-18 14:54 Date of issue: 2007-06-18 04:180_ENG.xml

General specifications

Upper limit of the sensing range	5000 mm
Reflector range	100 ... 5000 mm
Reference target	Retro-reflector Ø 80 mm
Light type	Red light 660 nm
Ambient light limit	≤ 10000 Lux sun light ≤ 7500 Lux halogen light

Indicators/operating means

LED yellow	switching state
------------	-----------------

Electrical specifications

Rated operational voltage U_e	via AS-Interface network
Time delay before availability t_v	50 ms

Output

Output type	AS-Interface
Rated operational current I_e	≤ 40 mA
Switching frequency f	≤ 100 Hz
Switch-on delay t_{on}	5 ms

Standard conformity

Standards	EN 60947-5-2
-----------	--------------

Ambient conditions

Ambient temperature	-25 ... 55 °C (248 ... 328 K)
Storage temperature	-25 ... 55 °C (248 ... 328 K)

Mechanical specifications

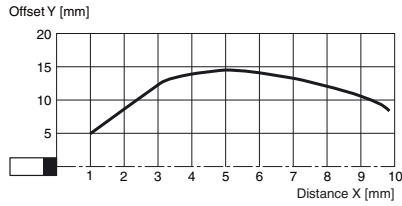
Protection degree	IP66 according to EN 60529
Connection	V1 connector (M12 x 1)
Material	
Housing	PBT
Optical face	PMMA
Mass	100 g



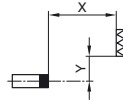
OCS5000-F8-B3-V1

Curves/Diagrams

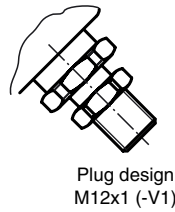
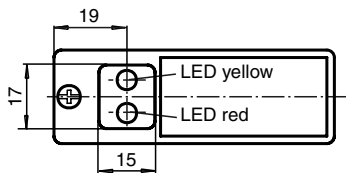
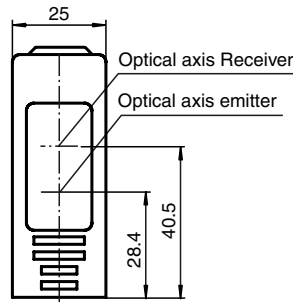
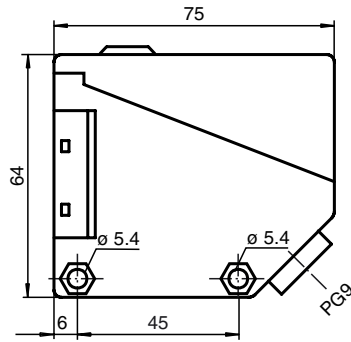
Characteristic response curve



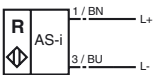
Permissible distance (offset) between optical axis and retro-reflector.



Dimensions



Electrical connection



o = light ON, • = dark ON

AS-Interface programming

Address	preset to 00, can be changed via Busmaster or programming devices
IO code	1
ID code	1

- **Data bit**

Bit	Function
D0	switch output
D1	pre-fault indication (0=ON, 1=OFF)
D2	ready to operate
D3	not used

- **Parameter bit**

Bit	Function (1/0)
P0	not used
P1	switch output, light*/dark ON
P2	pulse extension (20 ms) OFF*/ON
P3	pulse extension of light*/dark signals (OFF/ON-Delay)

* Default setting