



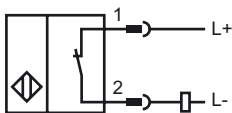
Model Number

NCB5-18GM60-Z1-V1

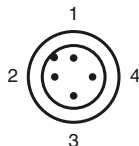
Features

- Comfort series
- 5 mm embeddable

Connection



Pinout

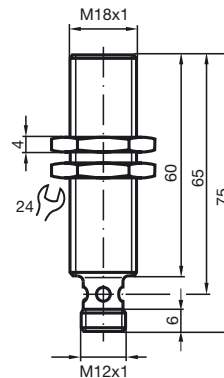


Wire colors in accordance with EN 60947-5-2

1	BN
2	WH
3	BU
4	BK

Release date: 2009-07-14 09:54 Date of issue: 2009-07-14 03:4354_ENG.xml

Dimensions



Technical Data

General specifications

Switching element function	DC	Break function
Rated operating distance	s_n	5 mm
Installation		embeddable
Output polarity		DC
Assured operating distance	s_a	0 ... 4.05 mm
Reduction factor r_{Al}		0.2
Reduction factor r_{Cu}		0.15
Reduction factor r_{V2A}		0.62

Nominal ratings

Operating voltage	U_B	6 ... 60 V
Switching frequency	f	0 ... 1000 Hz
Hysteresis	H	1 ... 15 typ. 5 %
Reverse polarity protection		tolerant
Short-circuit protection		pulsing
Voltage drop	U_d	≤ 5.5 V
Operating current	I_L	2 ... 100 mA
Off-state current	I_r	0 ... 0.9 mA typ. 0.7 mA
Indication of the switching state		LED, yellow

Standard conformity

Standards	IEC / EN 60947-5-2:2004
-----------	-------------------------

Ambient conditions

Ambient temperature	-25 ... 70 °C (248 ... 343 K)
Storage temperature	-40 ... 100 °C (233 ... 373 K)

Mechanical specifications

Connection type	V1-connector
Core cross-section	-
Housing material	Stainless steel
Sensing face	PBT
Protection degree	IP67