



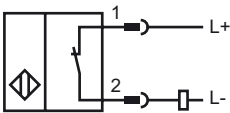
**Model Number**

NCB10-30GM60-Z1-V1

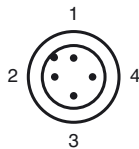
**Features**

- Comfort series
- 10 mm flush

**Connection**



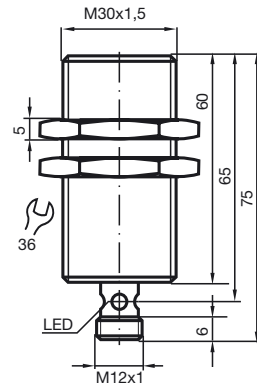
**Pinout**



Wire colors in accordance with EN 60947-5-2

1	BN	(brown)
2	WH	(white)
3	BU	(blue)
4	BK	(black)

**Dimensions**



**Technical Data**

**General specifications**

Switching element function	DC	NC
Rated operating distance	$s_n$	10 mm
Installation		flush
Output polarity		DC
Assured operating distance	$s_a$	0 ... 8.1 mm
Reduction factor $r_{Al}$		0.32
Reduction factor $r_{Cu}$		0.32
Reduction factor $r_{304}$		0.72

**Nominal ratings**

Operating voltage	$U_B$	5 ... 60 V
Switching frequency	$f$	0 ... 650 Hz
Hysteresis	$H$	1 ... 15 typ. 5 %
Reverse polarity protected		tolerant
Short-circuit protection		pulsing
Voltage drop	$U_d$	$\leq 5$ V
Operating current	$I_L$	2 ... 100 mA
Off-state current	$I_r$	0 ... 0.9 mA typ. 0.7 mA
Indication of the switching state		Multihole-LED, yellow
Pre-fault indication		-

**Standard conformity**

Standards	IEC / EN 60947-5-2:2004
-----------	-------------------------

**Ambient conditions**

Ambient temperature	-25 ... 70 °C (-13 ... 158 °F)
Storage temperature	-40 ... 100 °C (-40 ... 212 °F)

**Mechanical specifications**

Housing material	Stainless steel
Sensing face	PBT
Protection degree	IP67
Note	discontinued model

Release date: 2012-05-04 09:28 Date of issue: 2012-05-04 033519\_eng.xml