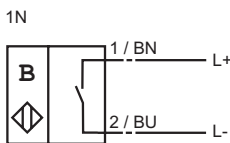


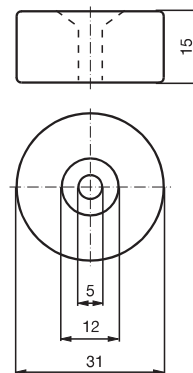


Switching element function	NAMUR NO
Rated operating distance s_n	55 mm
Installation	embeddable, in non-magn. metal
Assured operating distance s_a	0 ... 44 mm
Nominal voltage U_o	8 V
Switching frequency f	0 ... 1500 Hz
Hysteresis H	typ. 5 %
Reverse polarity protection	yes
Short circuit protection	yes
Current consumption	
Magnet detected	$\geq 2,3$ mA
Magnet not detected	≤ 1 mA
Indication of the switching state	LED, yellow
EMC in accordance with	EN 60947-5-2
Standards	DIN EN 60947-5-6 (NAMUR)
Ambient temperature	-25 ... 100 °C (248 ... 373 K)
Storage temperature	-40 ... 100 °C (233 ... 373 K)
Connection type	2 m, PVC cable
Core cross-section	0.34 mm ²
Housing material	high grade steel
Sensing face	high grade steel
Protection degree	IP67

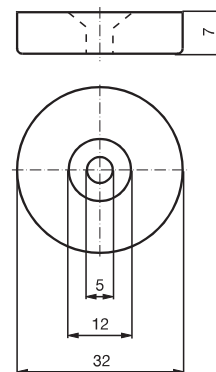
Connection_type:



Magnet DM 60-31-15



Magnet DM 25-32-07



Data for Ex areas

Effective internal inductivity C_i	$\leq 86 \text{ nF}$
Effective internal inductance L_i	$\leq 1600 \mu\text{H}^2)$