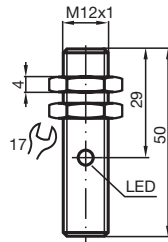


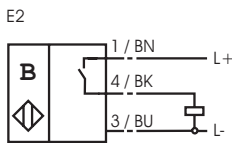
Comfort series
60 mm embeddable



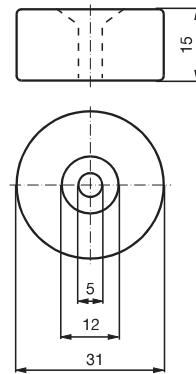
CE

Switching element function	PNP	Make function
Rated operating distance s_n	60 mm	
Installation	embeddable	
Assured operating distance s_a	0 ... 48,6 mm	
Operating voltage U_B	10 ... 30 V	
Switching frequency f	0 ... 400 Hz	
Reverse polarity protection	yes	
Short circuit protection	pulsing	
Voltage drop U_d	≤ 3 V	
Operating current I_L	0 ... 200 mA	
No-load supply current I_0	≤ 15 mA	
Indication of the switching state	LED, red	
Standards	EN 60947-5-2	
Ambient temperature	-25 ... 70 °C (248 ... 343 K)	
Connection type	V1-connector	
Housing material	high grade steel	
Sensing face	PBT	
Protection degree	IP67	

Connection_type:



Magnet DM 60-31-15



Magnet DM 25-32-07

