

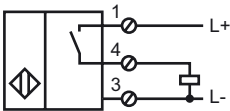


CE

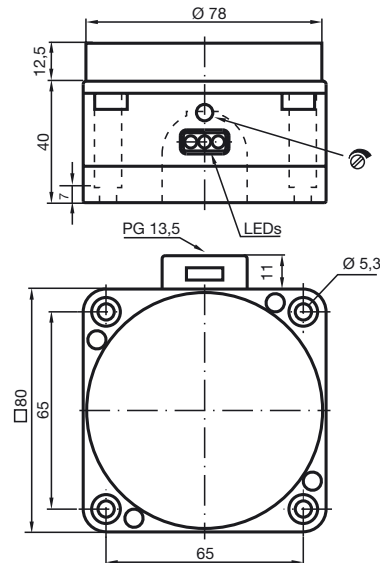
### Model Number

NJ60-FP-E2-Y23355

### Connection



## Dimensions



## Technical Data

### General specifications

Switching element function	PNP	Make function
Rated operating distance	$s_n$	60 mm
Installation		not embeddable
Output polarity		switched high
Assured operating distance	$s_a$	0 ... 50 mm
Measuring body		high grade steel tube
Reduction factor $r_{Al}$		0.4
Reduction factor $r_{Cu}$		0.3
Reduction factor $r_{V2A}$		0.85
Bottle speed		ca. 2.5 m/s (65000 btls./h)
Adjustment aid		LED, green/red

### Nominal ratings

Operating voltage	$U_B$	10 ... 30 V
Switching frequency	$f$	0 ... 100 Hz
Hysteresis	$H$	typ. 3 %
Reverse polarity protected		reverse polarity protected
Short-circuit protection		pulsing
Voltage drop	$U_d$	$\leq 3$ V
Operating current	$I_L$	0 ... 200 mA
No-load supply current	$I_0$	$\leq 20$ mA
Operating voltage display		LED, green
Indication of the switching state		LED, yellow

### Standard conformity

Standards	IEC / EN 60947-5-2:2004
-----------	-------------------------

### Ambient conditions

Ambient temperature	0 ... 60 °C (273 ... 333 K)
---------------------	-----------------------------

### Mechanical specifications

Connection type	terminal compartment
Core cross-section	up to 2.5 mm <sup>2</sup>
Housing material	POM
Sensing face	POM
Protection degree	IP65

**Installation hint**

**Mounting**

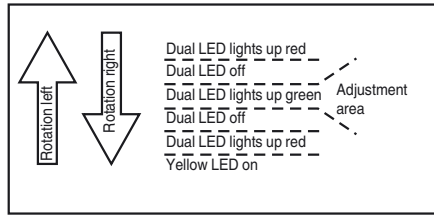
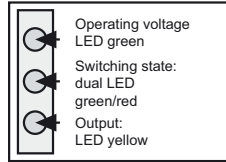
Mount the sensor 15 to 30 mm over the conveyor chain. This ensures that the sensor is not affected by the conveyor chain.

**Adjustment**

For the correct sensitivity adjustment, align the sensor relevant to the corresponding application.

- 1) After switching on the operating voltage (10 to 30 V DC), the green LED illuminates
- 2) The yellow LED illuminates when end stage is switched on
- 3) If no object is present, the dual LED in the center should light up green.

If this is not the case, turn the potentiometer to the right until the yellow LED illuminates. Then turn the potentiometer to the left until the dual LED lights up green.



**Inspection**

To check the correct adjustment, verify faultless detection of a stainless steel tube in a bottle.