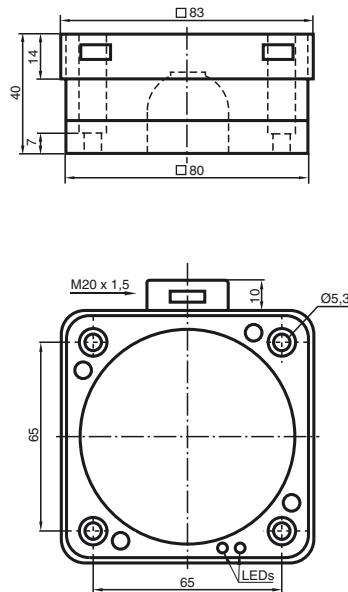


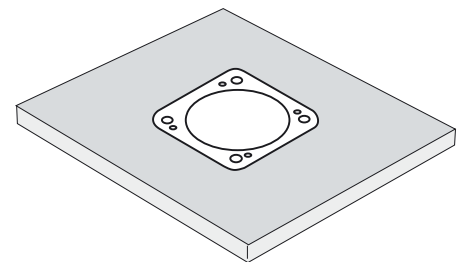
Comfort series
40 mm embeddable



Switching element function	AC	Make/Break function
Rated operating distance s_n	40 mm	
Installation	embeddable	
Assured operating distance s_a	0 ... 32,4 mm	
Reduction factor r_{AI}	0,38	
Reduction factor r_{Cu}	0,35	
Reduction factor r_{V2A}	0,83	
Operating voltage U_B	20 ... 253 V ¹⁾	
Switching frequency f	0 ... 10 Hz	
Hysteresis H	0 ... 20 typ. %	
Short circuit protection	no	
Voltage drop U_d	≤ 7 V	
Momentary current (20 ms, 0.1 Hz)	0 ... 4000 mA	
Operating current I_L	10 ... 500 mA	
Off-state current I_r	0 ... 2,5 mA typ.	
Operating voltage display	LED, green	
Indication of the switching state	LED, yellow	
Standards	EN 60947-5-2	
Ambient temperature	-25 ... 70 °C (248 ... 343 K)	
Connection type	terminal compartment	
Core cross-section	up to 2.5 mm ²	
Housing material	PBT	
Sensing face	PBT	
Protection degree	IP67	
Note	¹⁾ In the temperature range below 0 °C, permissible operating voltage U_b 80...253 V	

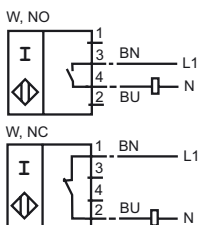
These sensors are especially designed for embeddable mounting in conveyor floors. Due to its precise location in metal base plates the sensor is afforded a high degree of mechanical protection. No clearance is required between the sensor and the base plate, avoiding the need for protective guarding to prevent possible foot injury.

The large sensing range ensures positive detection, and thus provides consistent control and monitoring of the conveyor.



Warning!
Once the metal screening has been removed, the sensor can no longer be embeddable mounted.

Connection_type:



020657_ENG.xml

2003-12-03