



CE

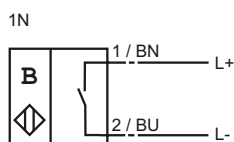
Model Number

MJ60-12GM-1N

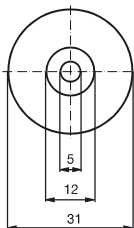
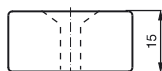
Features

- Comfort series
- 60 mm embedded with permanent magnet DM 60-31-15

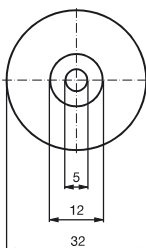
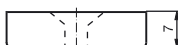
Connection



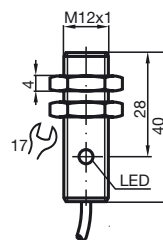
Magnet DM 60-31-15



Magnet DM 25-32-07



Dimensions



Technical Data

General specifications

Switching element function	NAMUR NO
Rated operating distance	s_n 60 mm
Installation	embeddable
Output polarity	NAMUR
Assured operating distance	s_a 0 ... 60 mm

Nominal ratings

Nominal voltage	U_o 8 V
Switching frequency	f 0 ... 1000 Hz
Current consumption	
Magnet detected	≥ 3 mA
Magnet not detected	≤ 1 mA
Indication of the switching state	LED, yellow

Standard conformity

EMC in accordance with	EN 60947-5-2
Standards	DIN EN 60947-5-6 (NAMUR)

Ambient conditions

Ambient temperature	-25 ... 70 °C (248 ... 343 K)
---------------------	-------------------------------

Mechanical specifications

Connection type	2 m, PVC cable
Core cross-section	0.34 mm ²
Housing material	Stainless steel
Sensing face	Stainless steel
Protection degree	IP67
Note	discontinued model

ATEX

Data for Ex areas

Effective internal inductivity	C_i	≤ 40 nF
Effective internal inductance	L_i	≤ 43 μ H

Release date: 2002-11-04 12:08 Date of issue: 2008-06-30 020035_ENG.xml