

- Verrouillages et cadenasage
- Mechanismy blokirovki
- Blokkering
- Blokady
- Locking devices
- Kilitler
- Cerradura
- Bloqueio
- Κλείδωμα

**Verrouillages à clé en position "ouvert"**

**Blokkering met sleutel in open**

**Key lock in open position**

**Cerradura de llave en posición abierta**

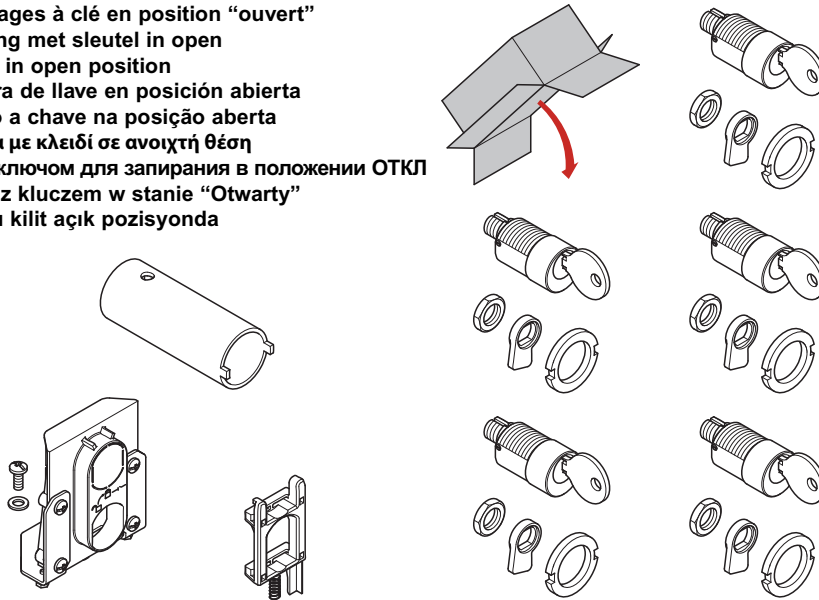
**Bloqueio a chave na posição aberta**

**Κλείδωμα με κλειδί σε ανοιχτή θέση**

**Замки с ключом для запираения в положении ОТКЛ**

**Blokada z kluczem w stanie "Otwarty"**

**Anahtarlı kilit açık pozisyonda**



**288 28**

**288 29**

RONIS: HF Sécurité - RBA90GEL3149

**288 30**

PROFALUX: HF Sécurité - PBA90GPS3149

**288 31**

RONIS: HF Sécurité - RBA90GEL3149

**Verrouillages à clé en positions "test" et "débroché"**

**Blokkering met sleutel "test" en "uitrijd" positie**

**Key lock in "test" and "draw-out" positions**

**Desglose cerradura de llave en posición "test" y "movil"**

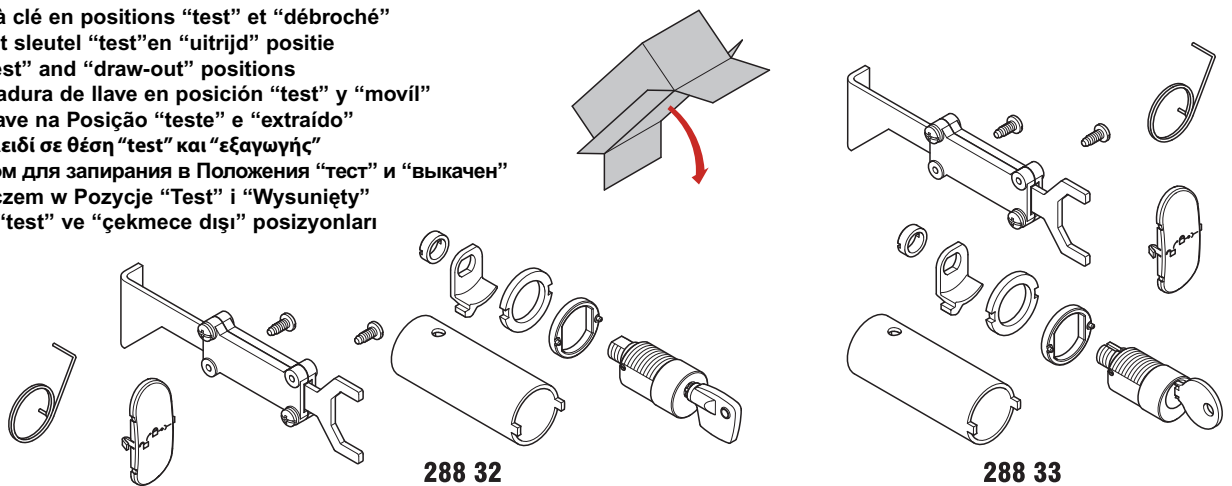
**Bloqueio a chave na Posição "teste" e "extraído"**

**Κλείδωμα με κλειδί σε θέση "test" και "εξαγωγή"**

**Замки с ключом для запираения в Положения "тест" и "выкачен"**

**Blokada z kluczem w Pozycje "Test" i "Wysunięty"**

**Anahtarlı kilit "test" ve "çekmece dışı" pozisyonları**



**288 32**

PROFALUX: HF Sécurité - PBA90GPS3149

**288 33**

RONIS: HF Sécurité - RBA90GEL3149

**Cadenassage en position "ouvert"**

**Blokkering hangsloten in open**

**Padlock in open position**

**Cerradura de llave en posición abierta**

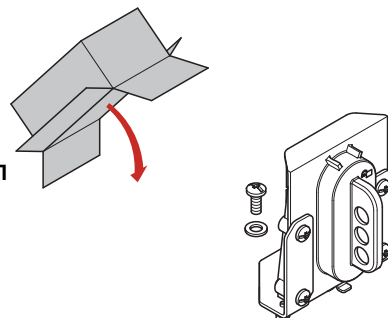
**Bloqueio cadeado na posição aberta**

**Λουκέτο σε ανοιχτή θέση**

**Замок навесной для блокировки в положениии ОТКЛ**

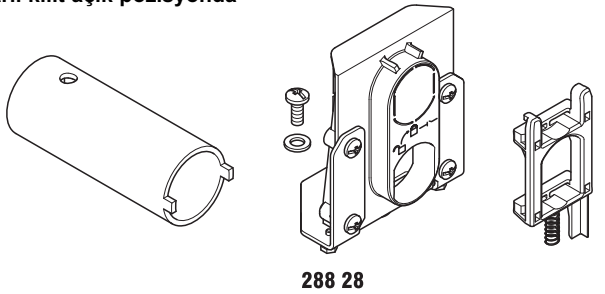
**Blokada kłódką w stanie "Otwarty"**

**Asma kilit açık pozisyonda**

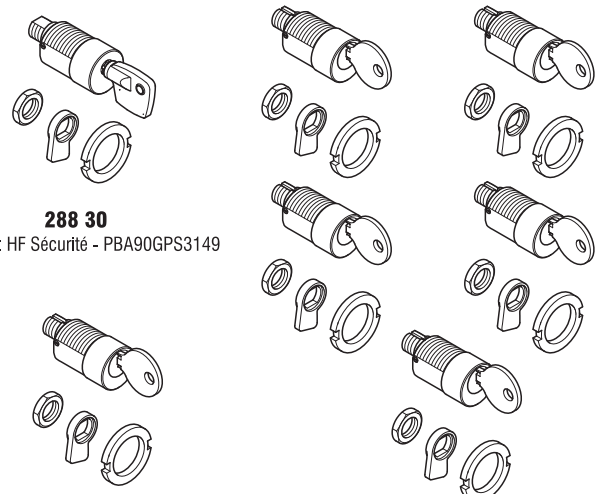


**288 21**

Verrouillages à clé en position "ouvert"  
 Blokkering met sleutel in open  
 Key lock in open position  
 Cerradura de llave en posición abierta  
 Bloqueio a chave na posição aberta  
 Κλείδωμα με κλειδί σε ανοιχτή θέση  
 Замки с ключом для запираения  
 в положении ОТКЛ  
 Blokada z kluczem w stanie "Otwarty"  
 Anahtarlı kilit açık pozisyonda



288 28



288 30

PROFALUX: HF Sécurité - PBA90GPS3149

288 31

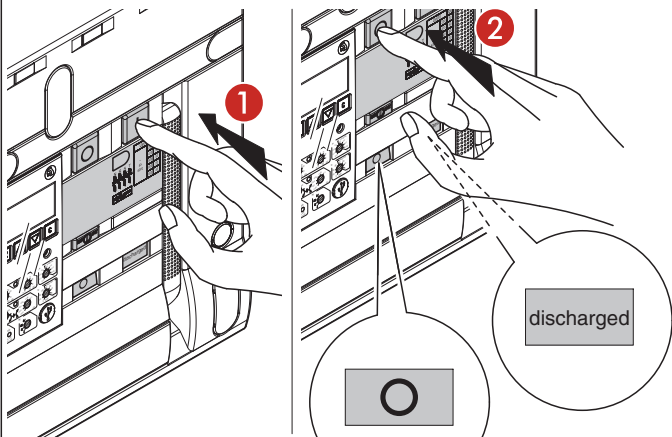
RONIS: HF Sécurité - RBA90GEL3149

288 29

RONIS: HF Sécurité - RBA90GEL3149

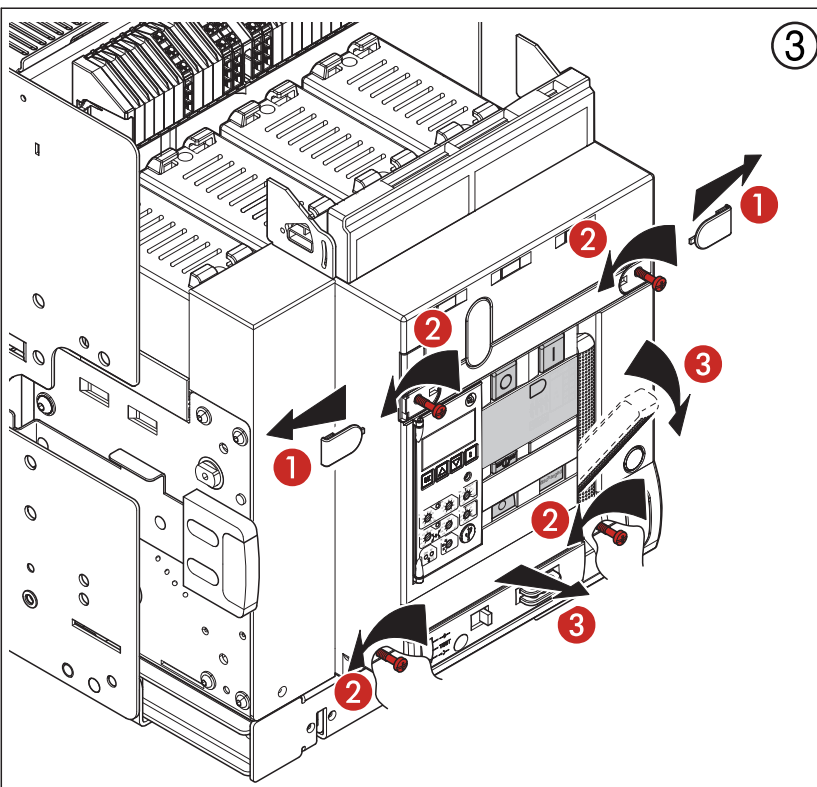
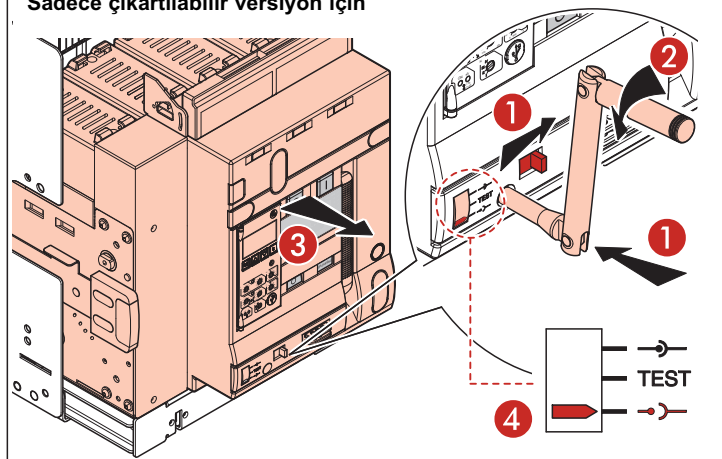
Version fixe et débrochable  
 Vaste en wegneembare versie  
 Fix and draw-out version  
 Versión fija y móvil  
 Versão fixa e com dispositivo de disparo  
 Εκδοχή σταθερή και εξαγωγής  
 Стационарное и выкатное исполнения  
 Wykonanie stacjonarne i wysuwne  
 Sabit ve çıkartılabilir versiyon

①

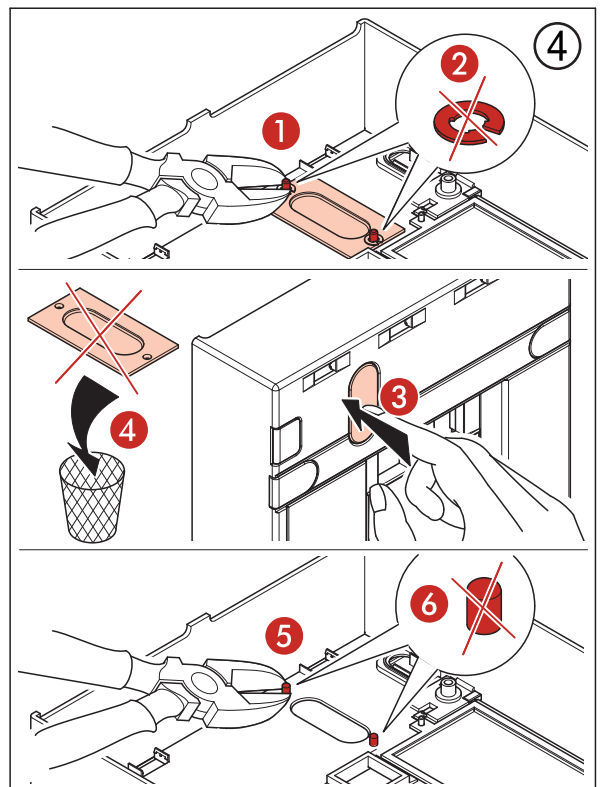


Seulement pour version débrochable  
 Alleen voor wegneembare versie  
 Only for draw-out version  
 Sólo para versión móvil  
 Somente para versão com dispositivo de disparo  
 Μόνο για εκδοχή εξαγωγής  
 Только для выкатного исполнения  
 Tylko dla wykonania wysuwne  
 Sadece çıkartılabilir versiyon için

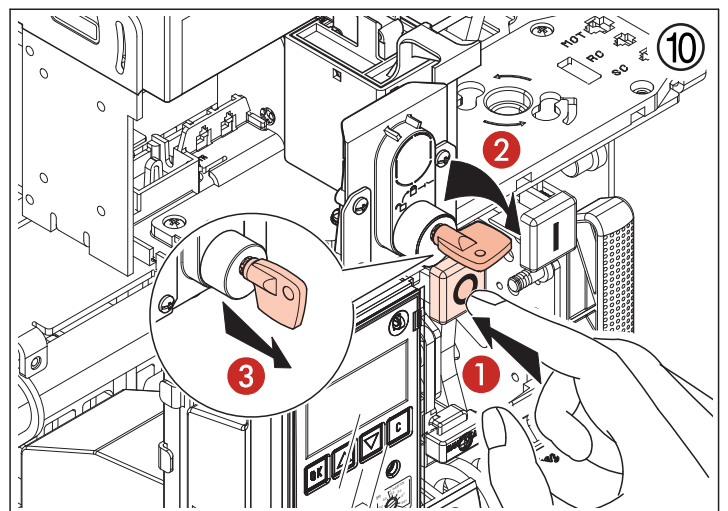
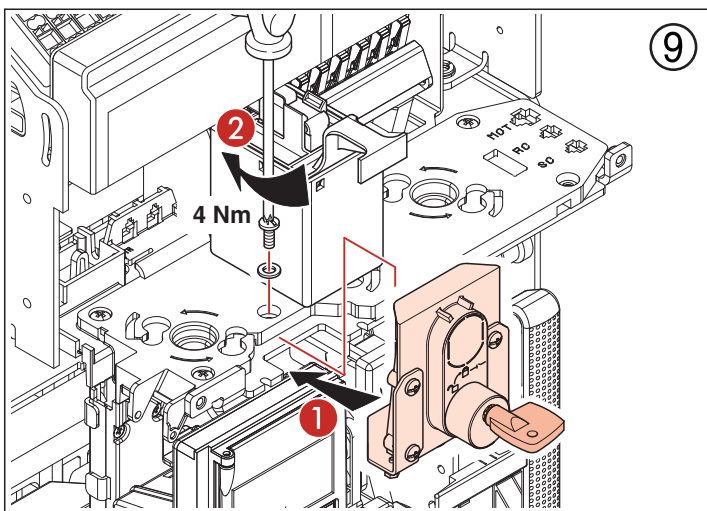
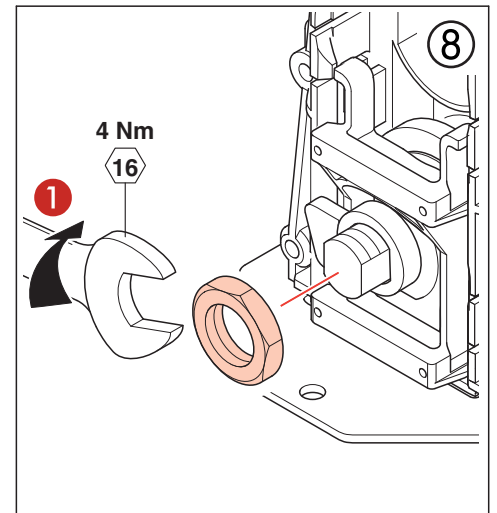
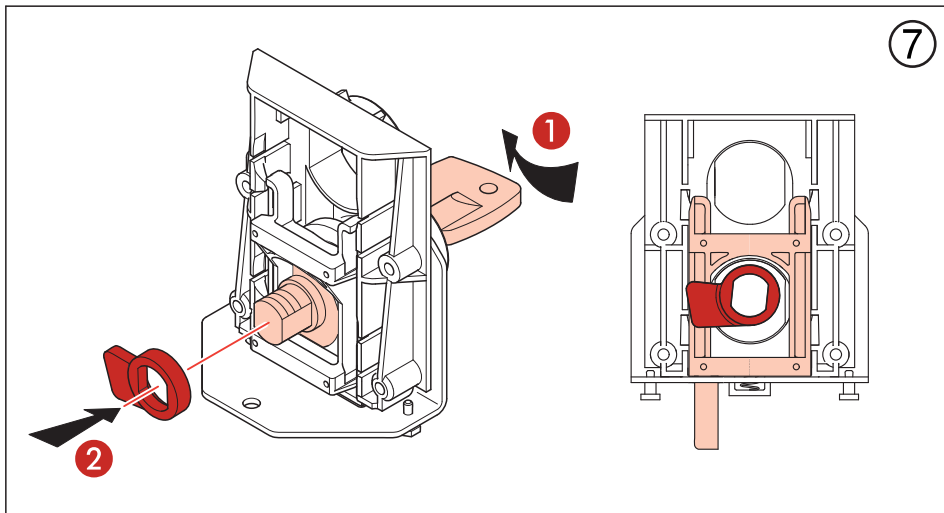
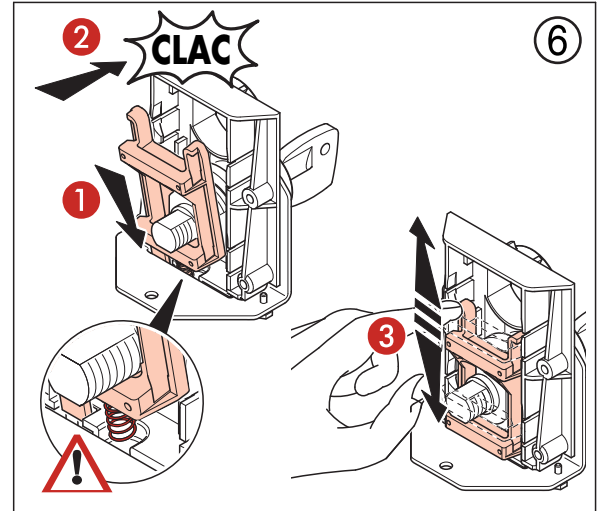
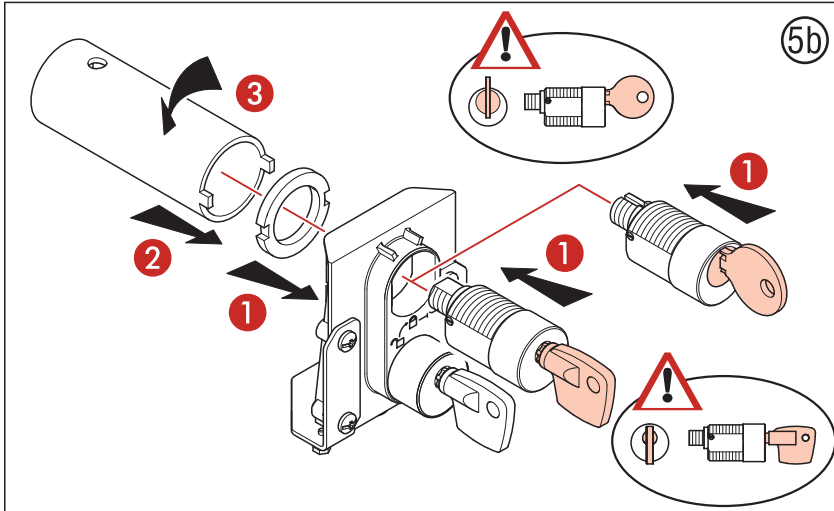
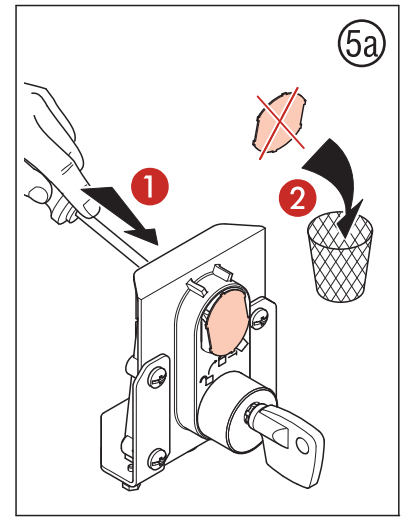
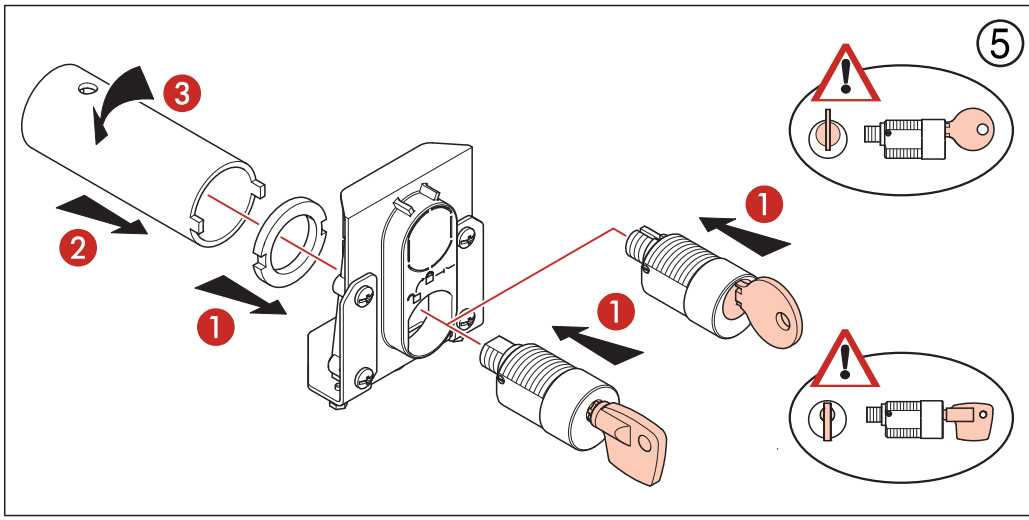
②



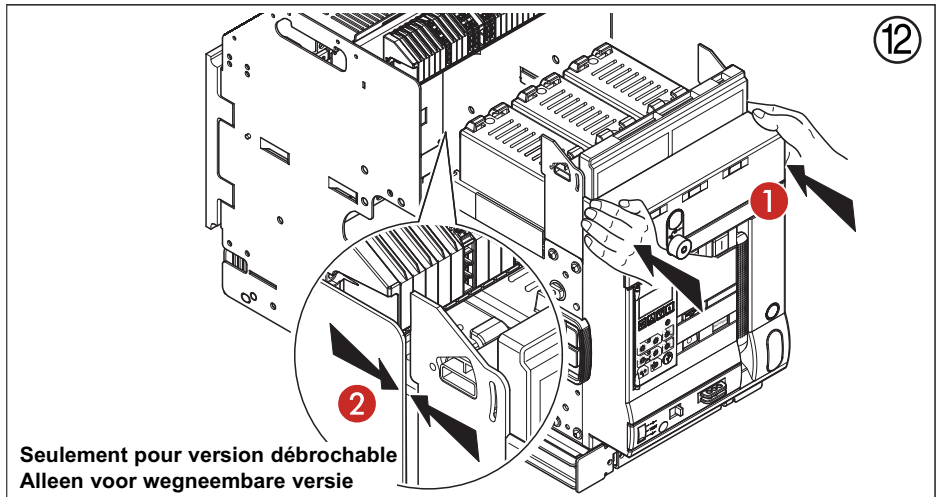
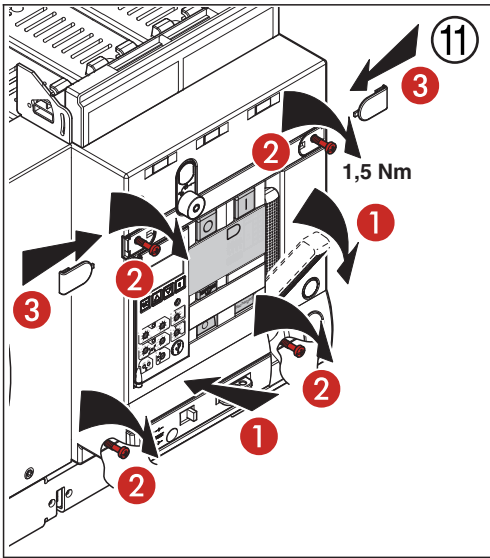
③



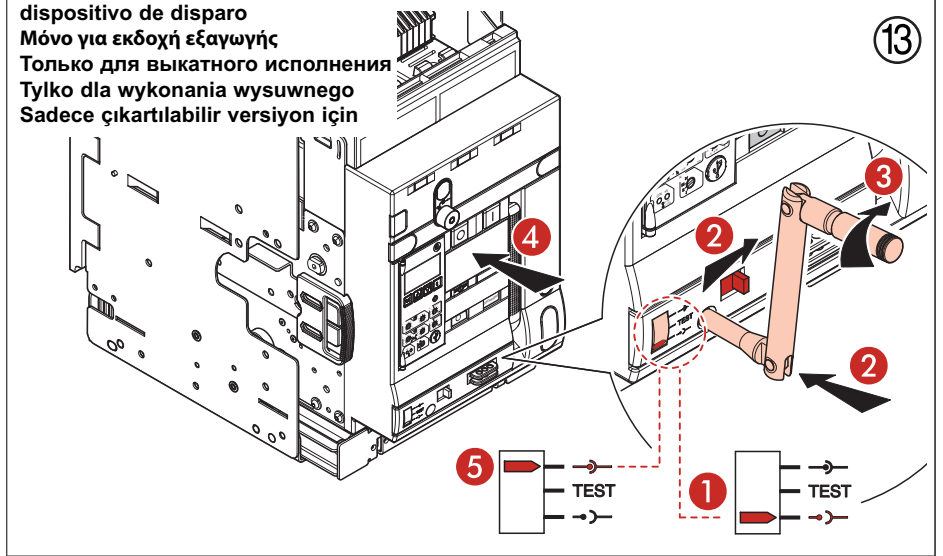
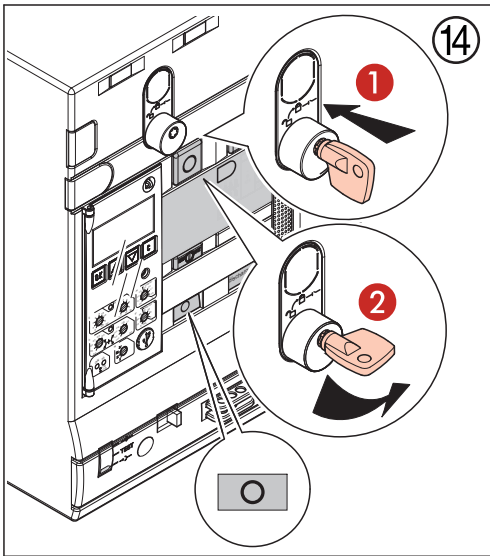
④



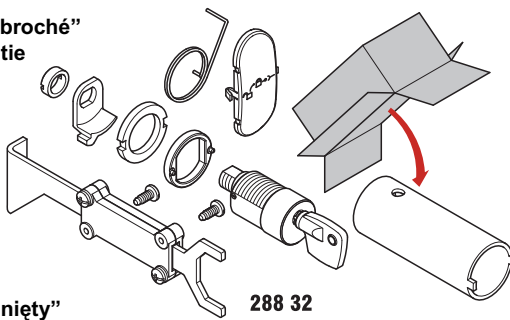




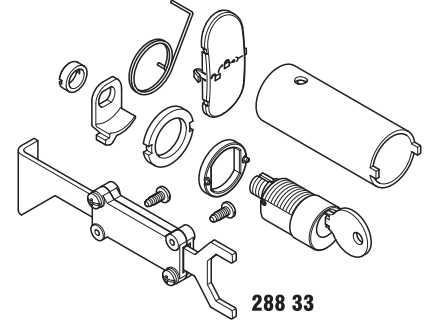
Seulement pour version débrochable  
 Alleen voor wegneembare versie  
 Only for draw-out version  
 Sólo para versión móvil  
 Somente para versão com  
 dispositivo de disparo  
 Μόνο για εκδοχή εξαγωγής  
 Только для выкатного исполнения  
 Tylko dla wykonania wysuwnego  
 Sadece çıkartılabilir versiyon için



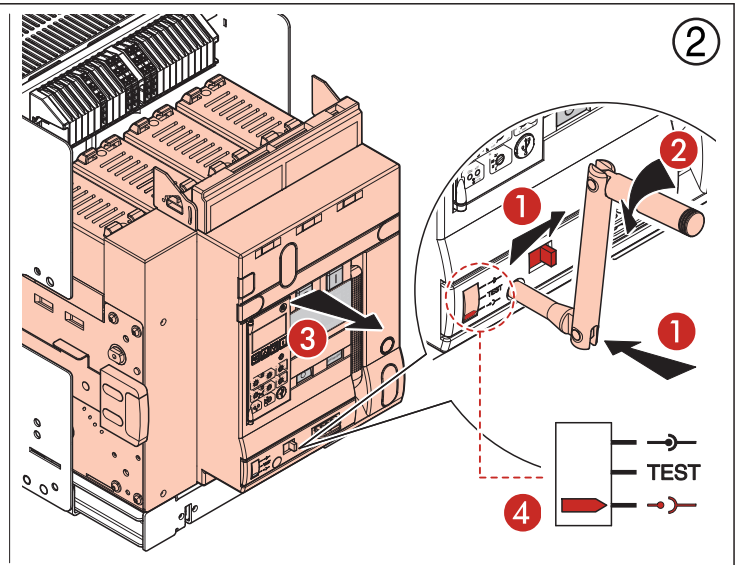
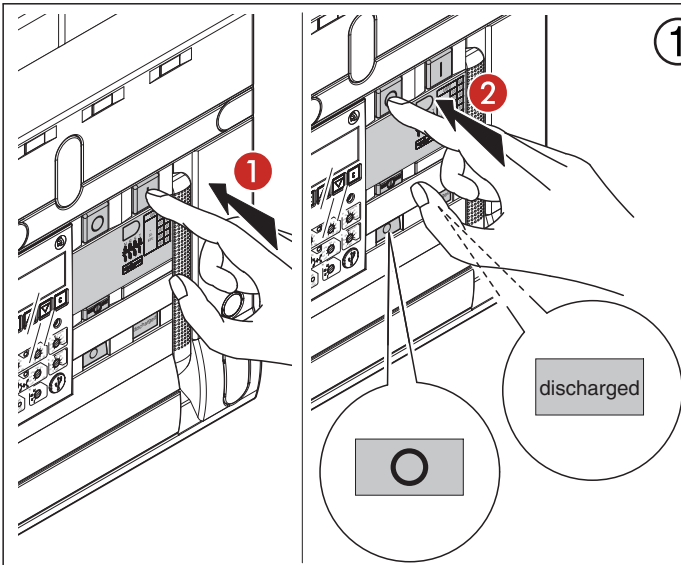
Verrouillages à clé en positions "test" et "débroché"  
 Blokkering met sleutel "test" en "uitrijd" positie  
 Key lock in "test" and "draw-out" positions  
 Desglose cerradura de llave en posición  
 "test" y "móvil"  
 Bloqueio a chave na Posição  
 "teste" e "extraído"  
 Κλειδώμα με κλειδί σε θέση "test"  
 και "εξαγωγής"  
 Замки с ключом для запираения в Положения  
 "тест" и "выкачен"  
 Blokada z kluczem w Pozycji "Test" i "Wysunięty"  
 Anahtarlı kilit "test" ve "çekmece dışı" pozisyonları



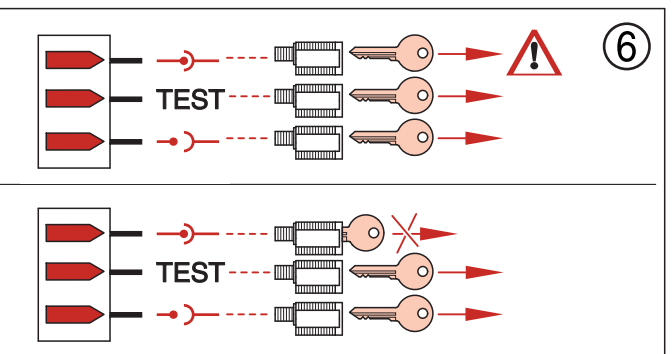
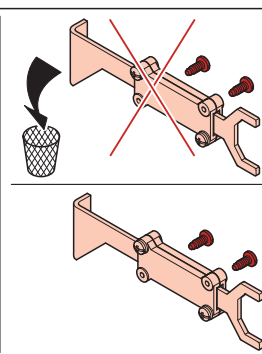
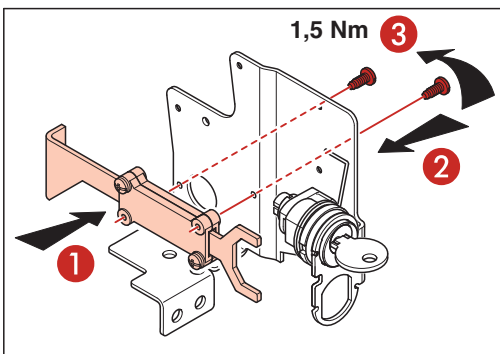
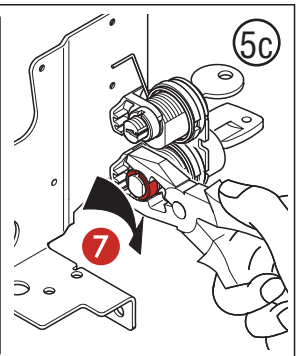
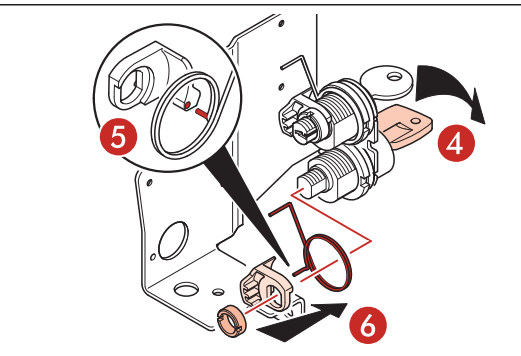
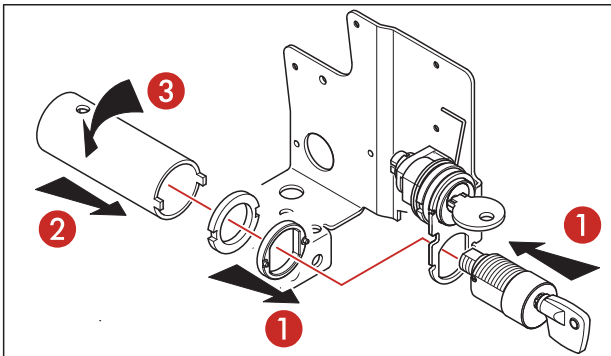
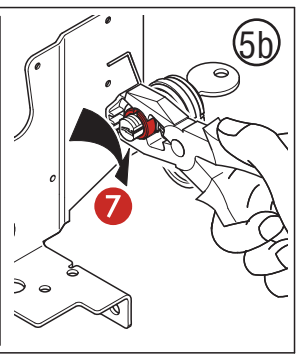
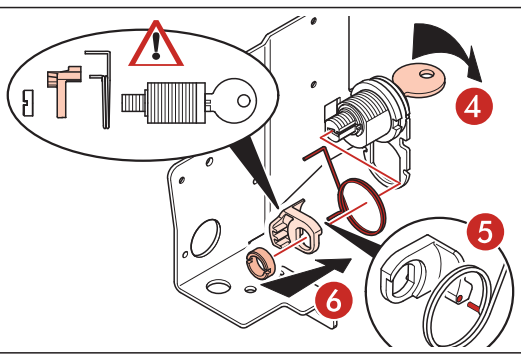
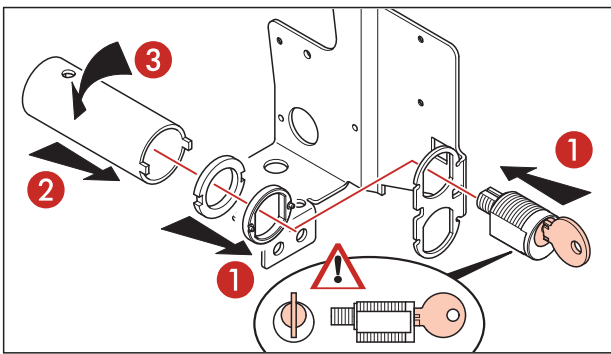
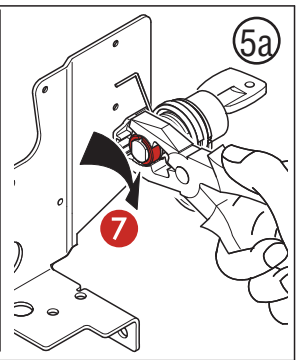
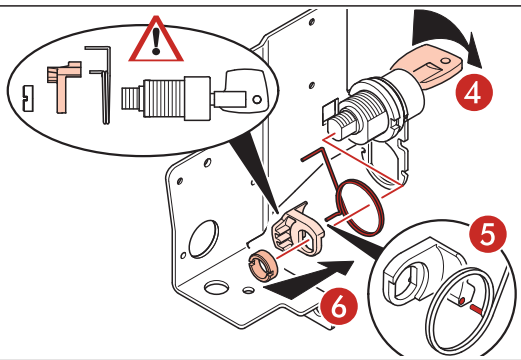
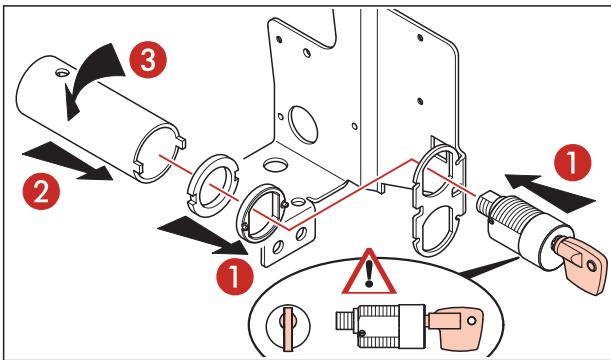
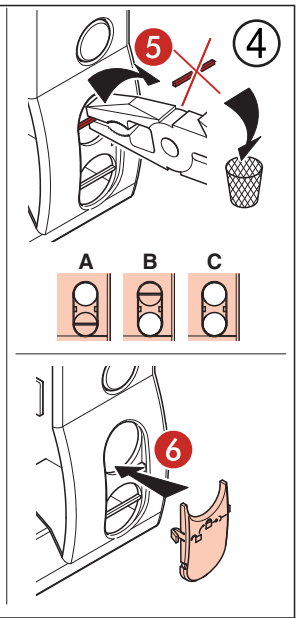
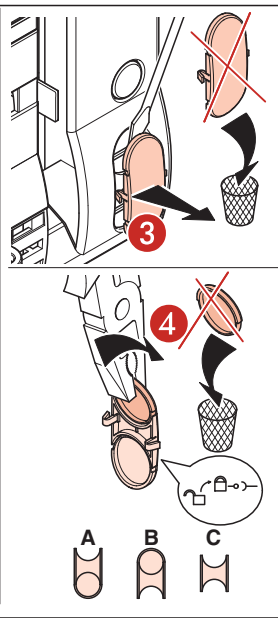
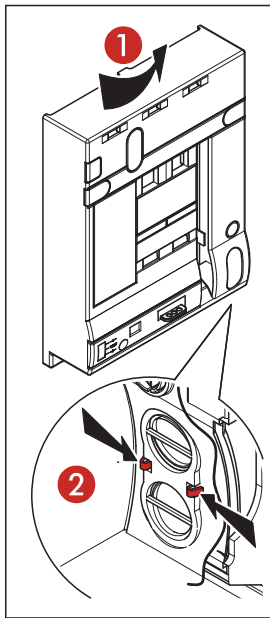
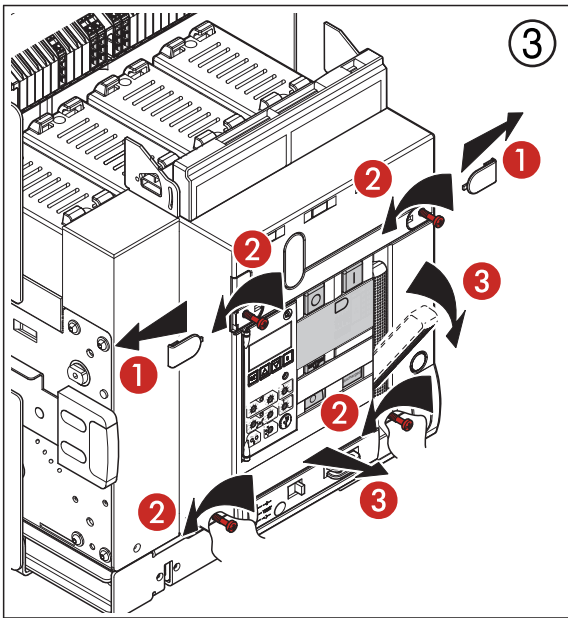
288 32 PROFALUX: HF Sécurité - PBA90GPS3149

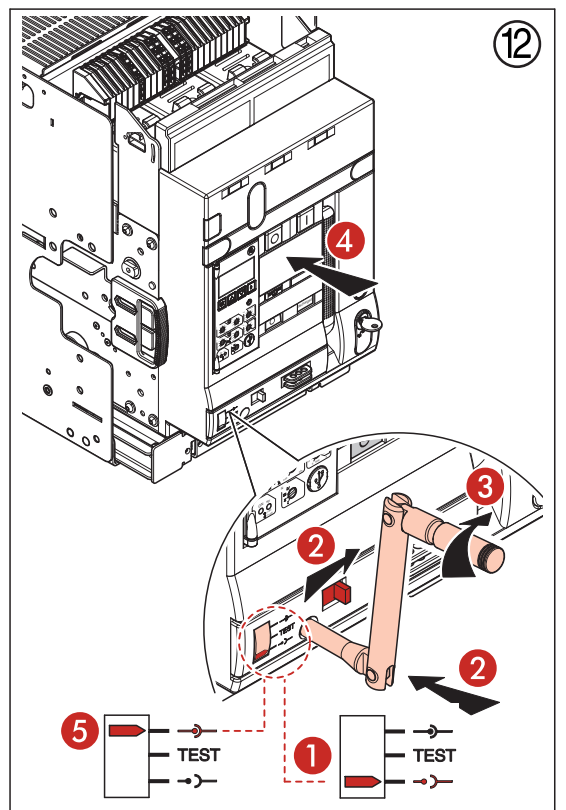
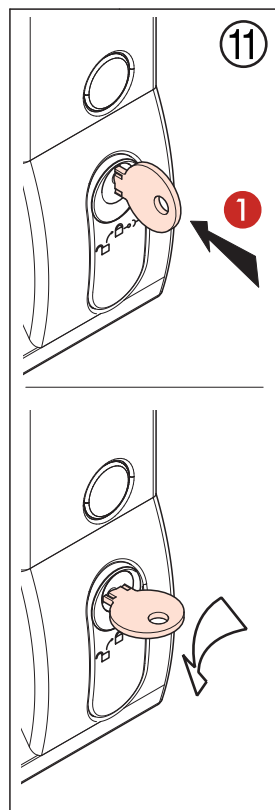
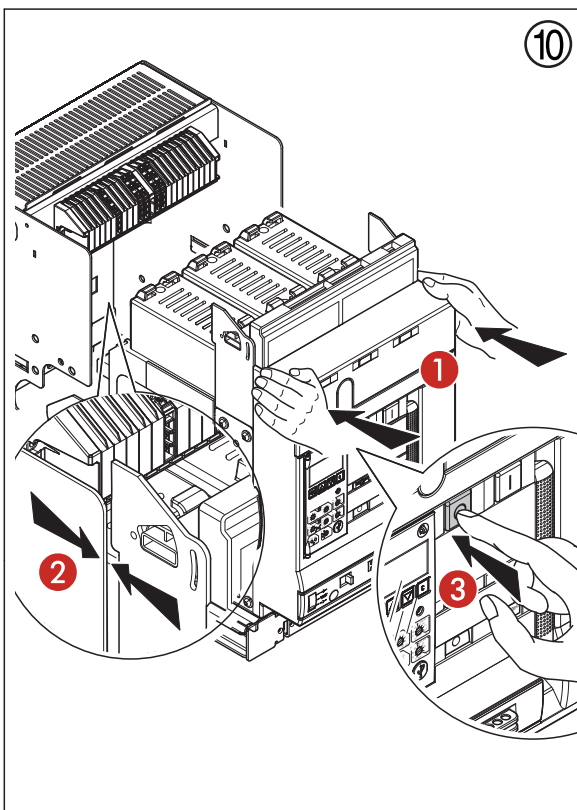
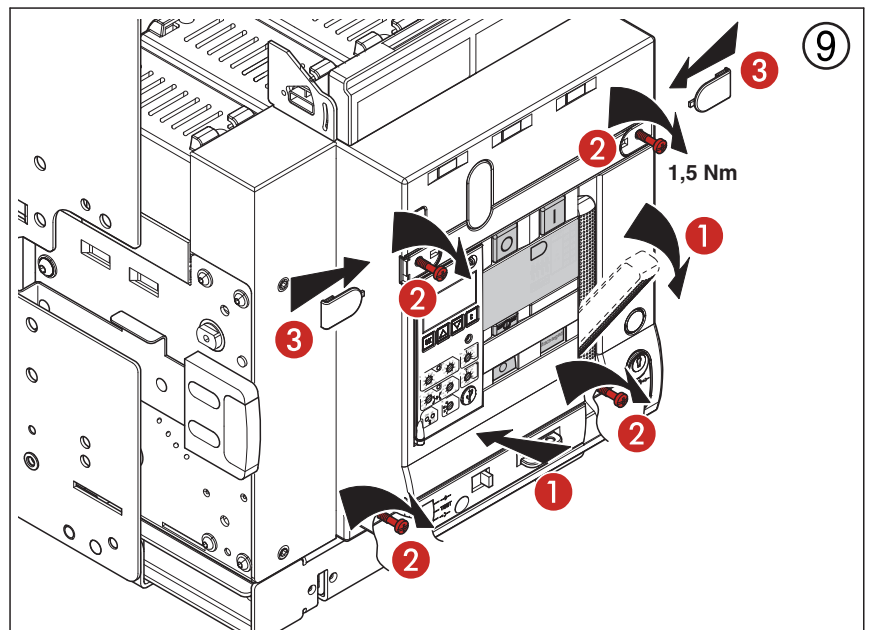
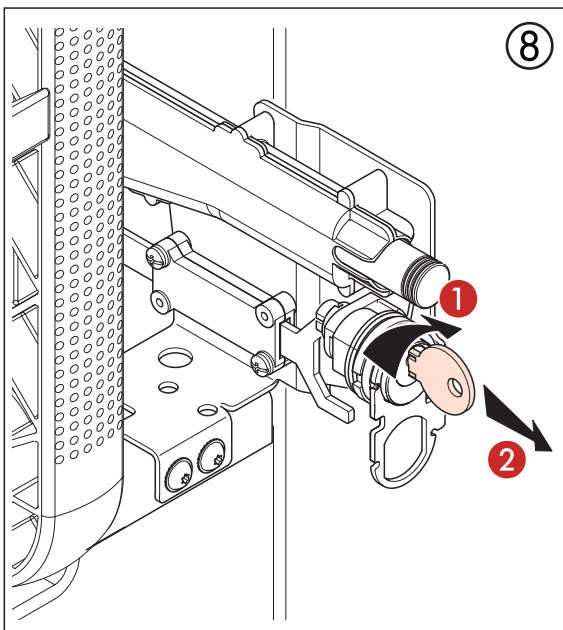
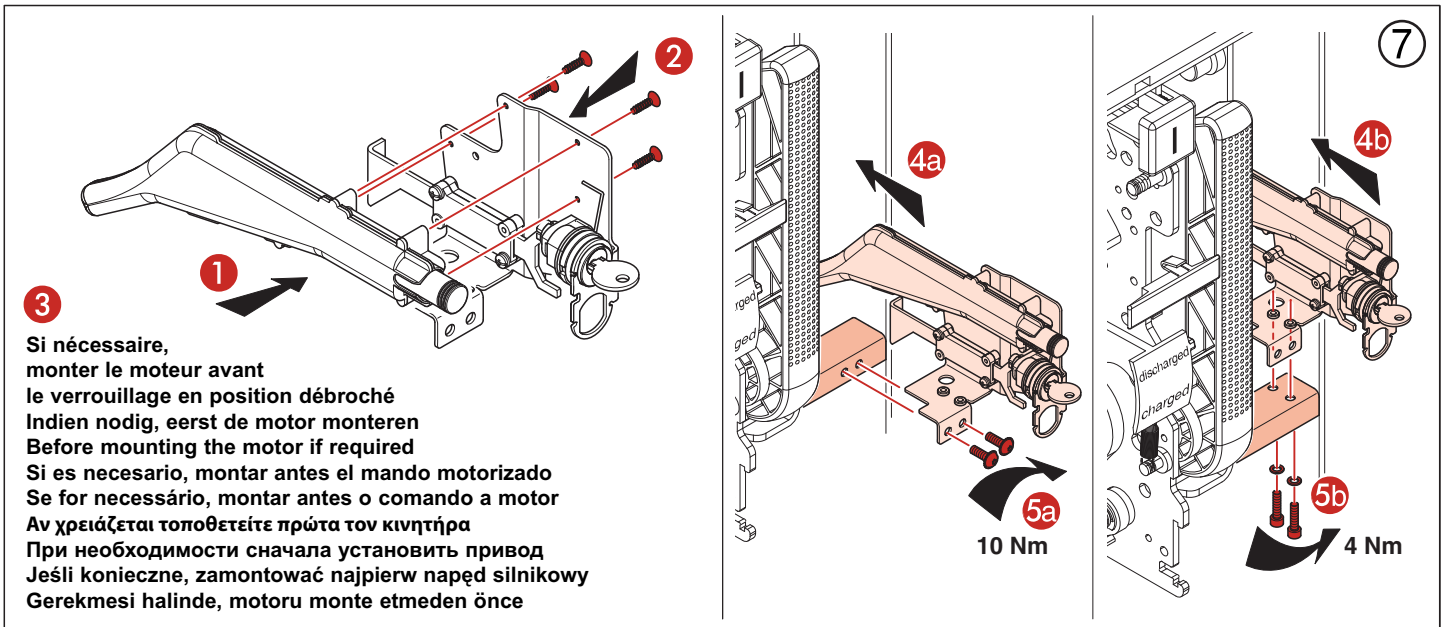


288 33 RONIS: HF Sécurité - RBA90GEL3149

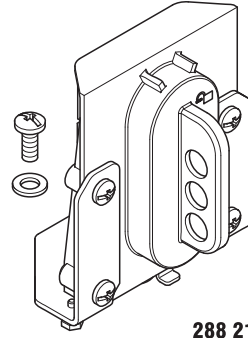
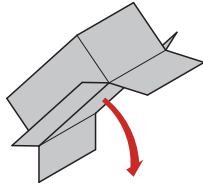








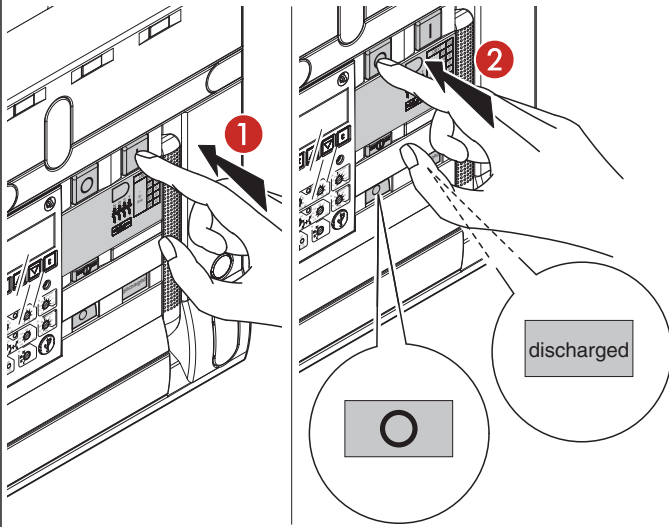
**Cadenassage en position "ouvert"**  
**Blokkering hangsloten in open**  
**Padlock in open position**  
**Cerradura de llave en posición abierta**  
**Bloqueio cadeado na posição aberta**  
**Λοκέτο σε ανοιχτή θέση**  
**Замок навесной для блокировки в положении ОТКЛ**  
**Blokada klódka w stanie "Otwarty"**  
**Asma kilit açık pozisyonda**



288 21

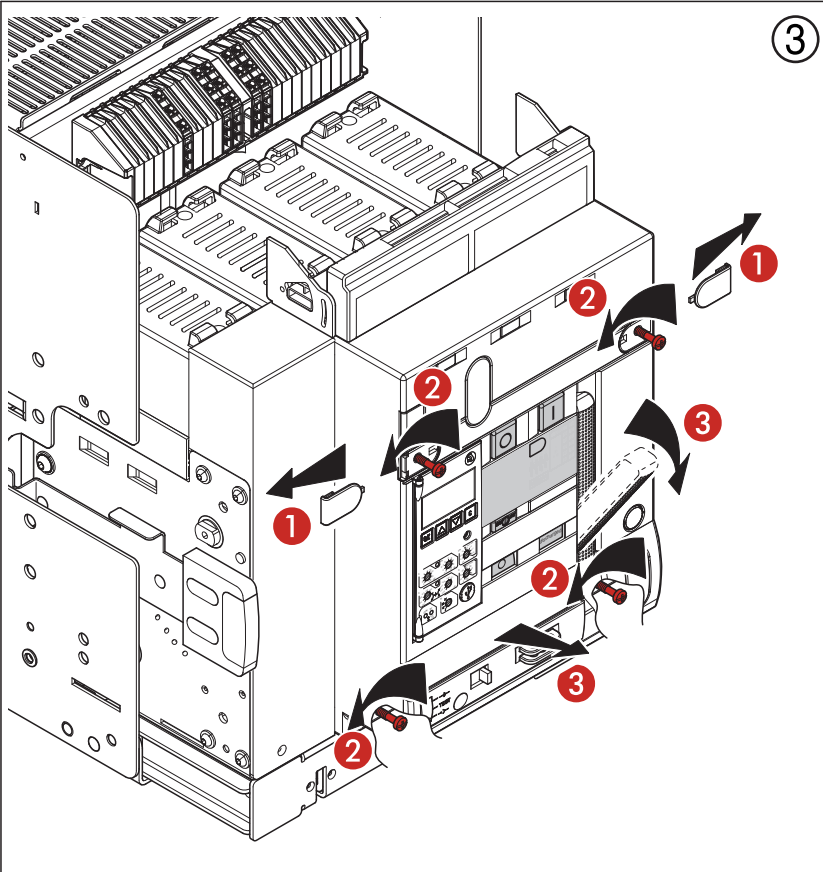
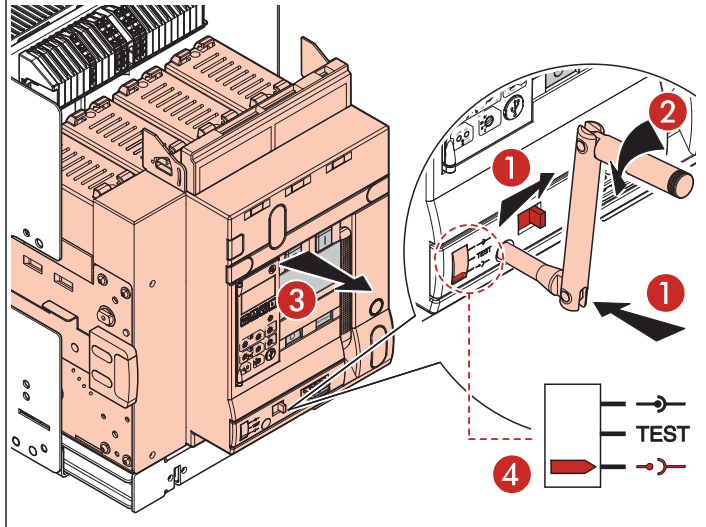
**Version fixe et débrochable**  
**Vaste en wegneembare versie**  
**Fix and draw-out version**  
**Versión fija y móvil**  
**Versão fixa e com dispositivo de disparo**  
**Εκδοχή σταθερή και εξαγωγής**  
**Стационарное и выкатное исполнения**  
**Wykonanie stacjonarne i wysuwne**  
**Sabit ve çıkartılabilir versiyon**

①

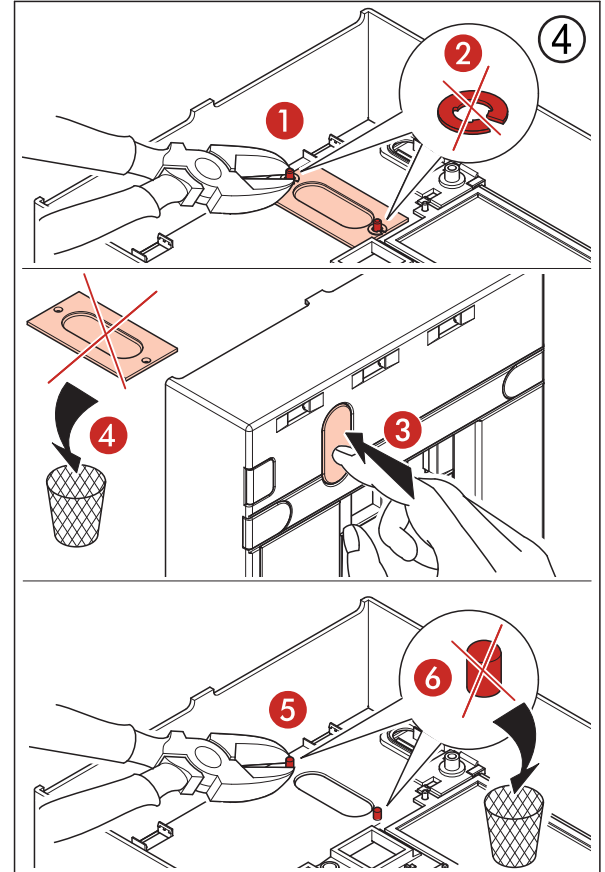


**Seulement pour version débrochable**  
**Alleen voor wegneembare versie**  
**Only for draw-out version**  
**Sólo para versión móvil**  
**Somente para versão com dispositivo de disparo**  
**Μόνο για εκδοχή εξαγωγής**  
**Только для выкатного исполнения**  
**Tylko dla wykonania wysuwne**  
**Sadece çıkartılabilir versiyon için**

②

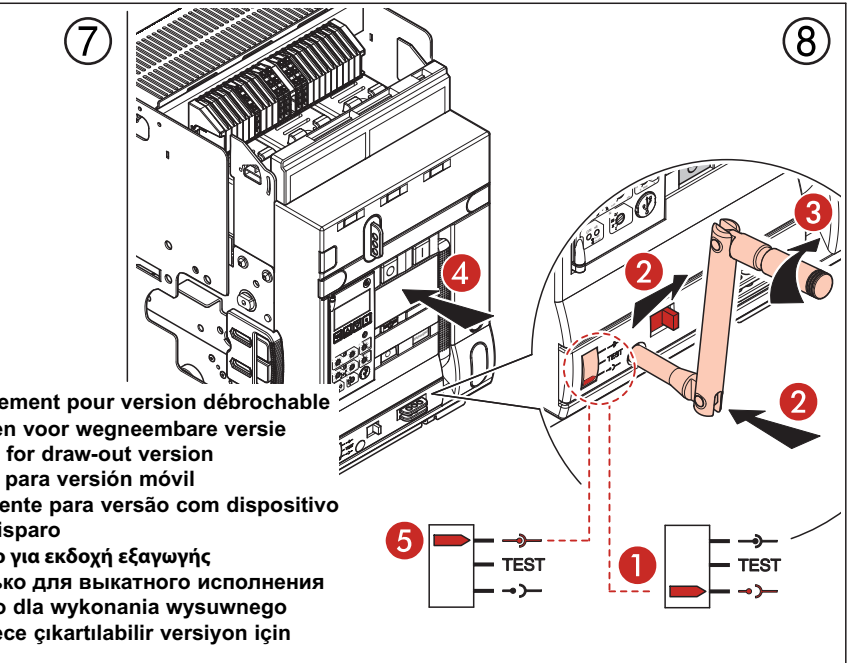
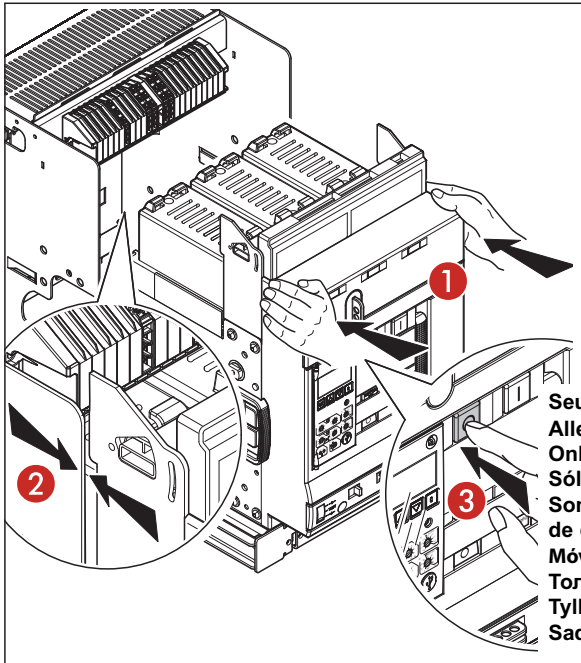
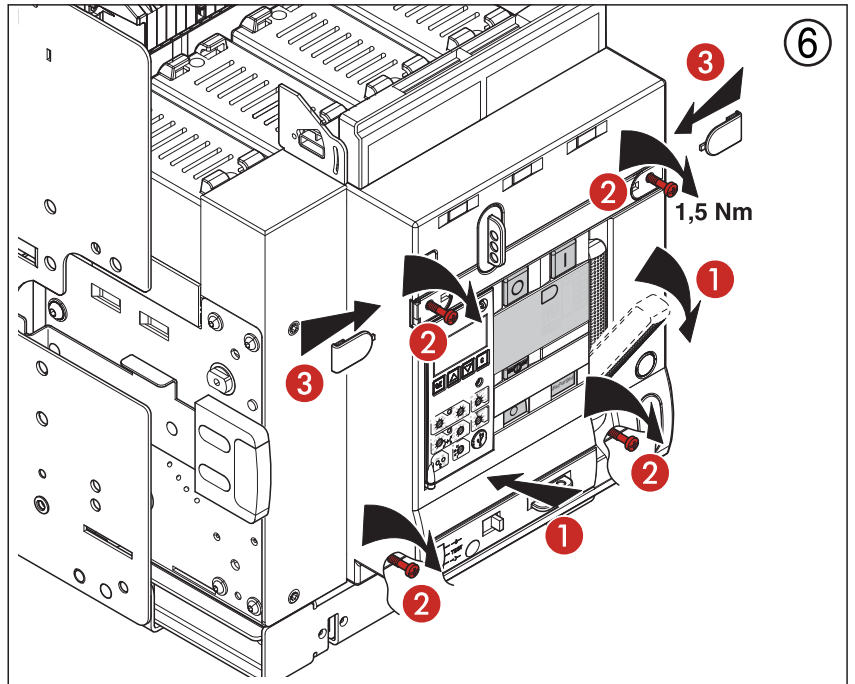
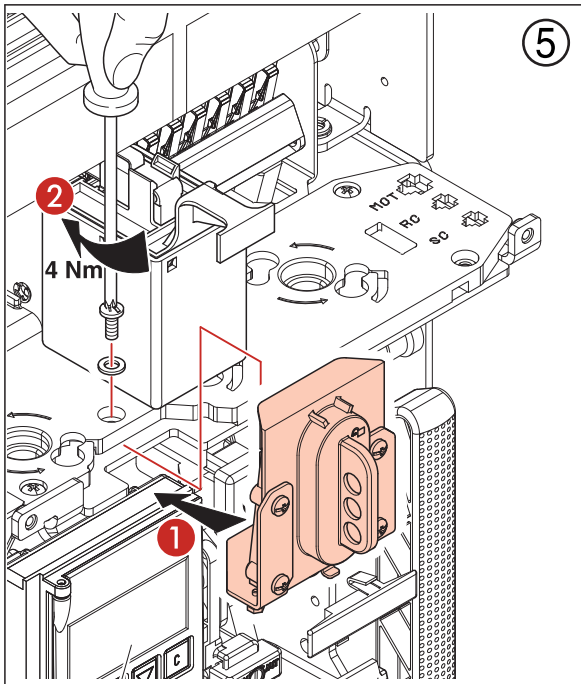


③



④





Seulement pour version débrochable  
 Alleen voor wegneembare versie  
 Only for draw-out version  
 Sólo para versión móvil  
 Somente para versão com dispositivo de disparo  
 Μόνο για εκδοχή εξαγωγής  
 Только для выкатного исполнения  
 Tylko dla wykonania wysuwnego  
 Sadece çıkartılabilir versiyon için

