

VALVE POSITION INDICATOR KITS

BEFORE INSTALLATION

Valve Position Indicators for direct acting MP953s have a protected adhesive backing for mounting. For proper bond, the metal surface must be free from all grease and dirt. Do not touch the adhesive after the protective backing has been removed.

Check that the valve is fully closed and linked to the operator for proper alignment of the scale.

Table 1 shows appropriate kits for operators.

Table 1. Valve Position Indicator Kits and Operators.

Kit No.	Type Operator
316028A	5 in. (127 mm) MP953, Direct Acting
316035A	7 in. (178 mm) MP953, Reverse Acting
316037A	8 in. (203 mm) MP953, Direct Acting
14004722-001	13 in. (330 mm), 3/4 in. (19 mm) Stroke, MP953 Direct Acting
316036A	13 in. (330 mm), 1-1/2 in. (38 mm) Stroke, MP953, Direct Acting
14001101-001	VP525, VP526, VP527, and VP531 Small Top Valves

T946

INSTALLATION

DIRECT ACTING MP953

1. Remove alcohol swab from foil package.

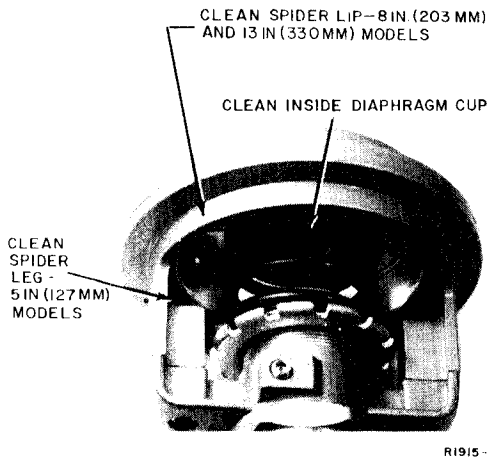


Fig. 1. Clean Spider Leg and Lip.

2. Remove dirt and grease with alcohol swab (Fig. 1).
3. Peel protective paper from adhesive backing of scaleplate.
4. Attach scaleplate (Fig. 2).
5. For 5-in. (127 mm) model, peel protective paper from adhesive-backed arrow. Ensure valve is fully closed. Attach arrow to spider leg. Arrow points to CLOSED when valve is in fully closed position (Fig. 3).

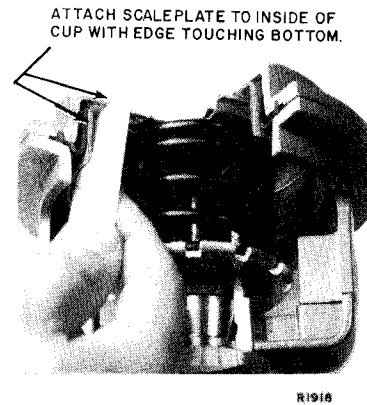


Fig. 2. Attach Scaleplate.

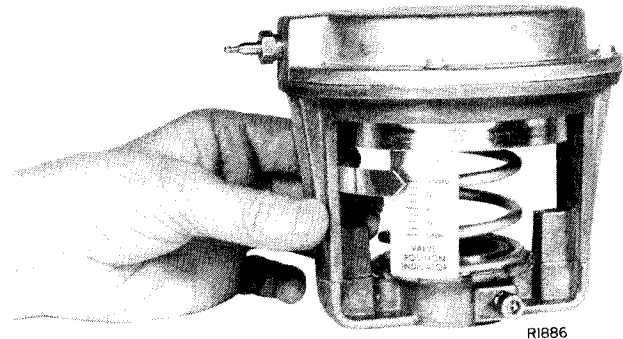
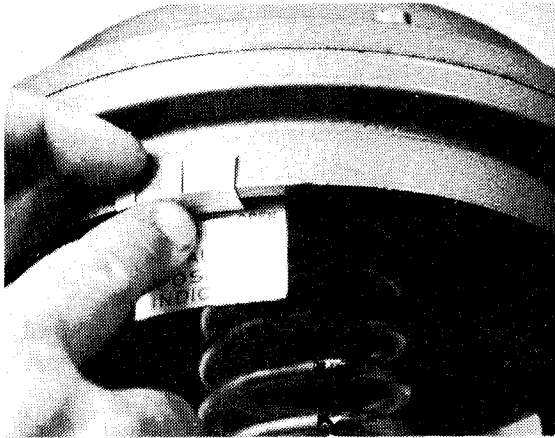


Fig. 3. Arrow Attached to Spider Leg.

- For 8- and 13-in. (302 and 330 mm) models, peel protective paper from adhesive-backed position indicator. Ensure valve is fully closed. Attach indicator to outside lip of spider (Fig. 4). Bend indicator and attach to underside of lip. Indicator points to CLOSED when valve is in fully closed position.

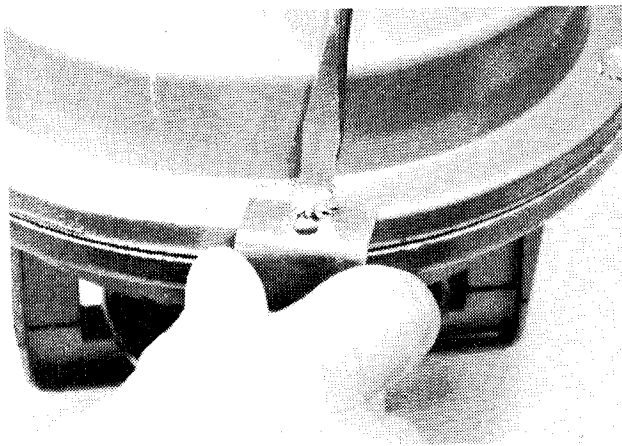


R1917

Fig. 4. Attach Indicator.

REVERSE ACTING MP953

- Loosen screw midway between two spider legs.
- Slip indicator plate under lockwasher (Fig. 5).
- Tighten screw.

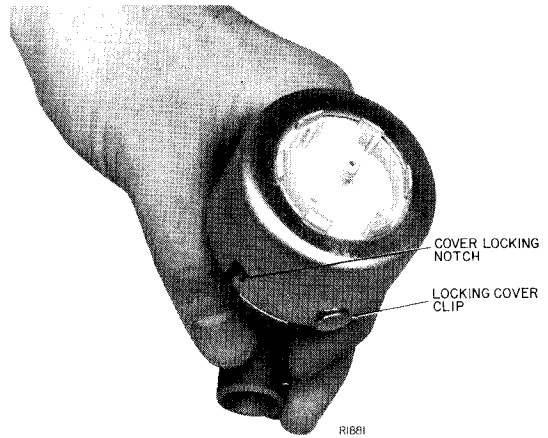


R1918

Fig. 5. Insert Indicator Plate.

SMALL TOP VALVES

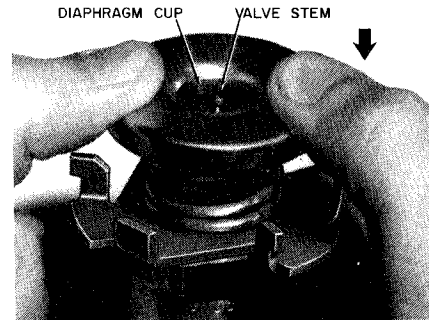
- Remove cover locking clip and turn cover counterclockwise, releasing locking car. Lift off cover (Fig. 6).



R1881

Fig. 6. Remove Cover.

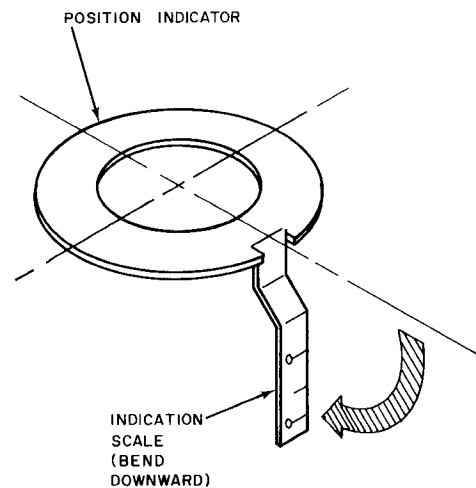
- Depress the diaphragm cup and slide sideways releasing the valve stem from the locking key slot in the cup. Remove the diaphragm cup (Fig. 7).



R379

Fig. 7. Remove Diaphragm Cup.

- Bend the scale of the position indicator down with the scale markings facing out (Fig. 8).



9775-1

Fig. 8. Bend Indication Scale.

- Place the position indicator on top of the spring with the scale portion positioned where it will be visible and easy to read (Fig. 9).

NOTE: Pull the valve stem completely up prior to replacing the diaphragm cup.

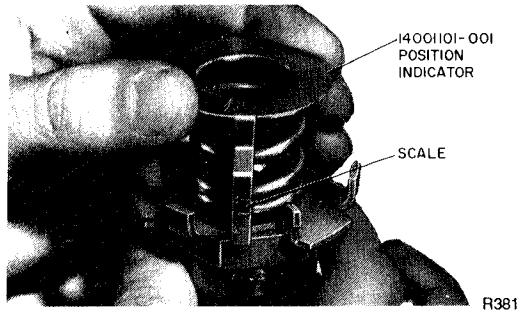


Fig. 9. Position Indicator Placement.

- Place the diaphragm cup on top of the position indicator, depress the cup and slide it sideways to lock the valve stem in the key slot (Fig. 10).
- Replace the cover aligning the proper locking ear with the cover locking notch in relation to the cover locking

clip hole. Turn the cover clockwise to set the ear in place. Replace cover locking clip.

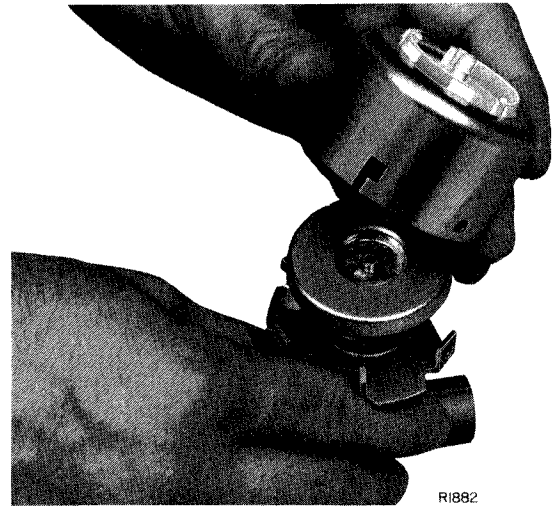


Fig. 10. Lock Valve Stem in Key Slot.

- Connect the air supply and apply air pressure. Position indicator scale should move down and up. Read position indication mark along the edge of the cover.

