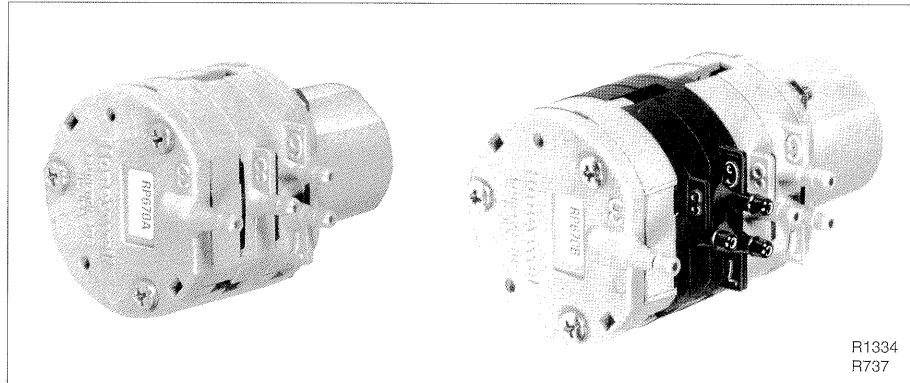


RP670A & B Pneumatic Switching Relays



General

The RP670A and B Switching Relays are two-position pneumatic relays with either single-pole (RP670A) or double-pole (RP670B), double-throw switching action. They are designed for use in pneumatic heating and cooling control systems where a valve or damper operator must be switched from one circuit to another. Switchover pilot pressure must be two-position, not modulated.

Features

- Available with either single-pole, double-throw (spdt) or double-pole, double-throw (dpdt) switching action
- Second switch on dpdt (RP670B) models molded in black for identification
- Air connections for 5/32-in. (4-mm) O.D. plastic tubing
- Molded plastic construction with neoprene diaphragms, stainless steel lever, and music wire spring
- In-line mounting, or wall or panel mounting with provided metal spring clip

Description

RP670A and B Switching Relays are two-position pneumatic relays with either single-pole (RP670A) or double-pole (RP670B), double-throw switching action.

Specifications

Models:

RP670A: Spdt switching Relay; switching action occurs between:

- 3 and 7 psi (20 and 50 kPa)
- 13 and 17 psi (90 and 120 kPa)
- 18 and 22 psi (124 and 152 kPa)
- 20 and 25 psi (140 and 175 kPa)

RP670B: Dpdt Switching Relay; switching action occurs between:

- 3 and 7 psi (20 and 50 kPa)
- 13 and 17 psi (90 and 120 kPa)
- 18 and 22 psi (124 and 152 kPa)
- 20 and 25 psi (140 and 175 kPa)

Operating Pressure:

0 to 25 psi (0 to 150 kPa)

Air Handling Capacity:

0.039 scfm (18 ml/s) and 1 psi (7 kPa) pressure drop across RP670

Air Connections:

For 5/32-in. (4-mm) O.D. plastic tubing

Materials of Construction:

Molded plastic with neoprene diaphragms
Stainless steel lever
Music wire spring

Mounting:

In line, or wall or panel with metal spring clip (optional)

Switchover Pilot Pressure:

Two-position

Maximum Safe Pressure:

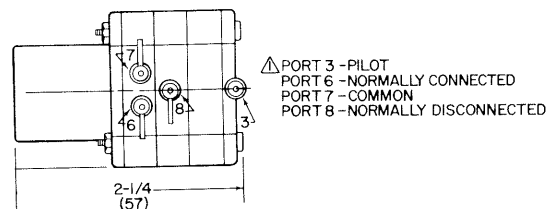
30 psi (207 kPa)

Ambient Operating Limits:

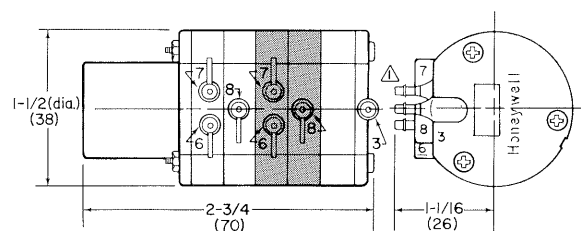
Temperature: 32 to 125F (0 to 52C)

Humidity: 5 to 95% rh

Dimensions In Inches (Millimeters)



RP670A



RP670B

3825

Honeywell

Home and Building Control

Honeywell Inc.
Honeywell Plaza
P.O. Box 524
Minneapolis, MN 55408-0524

Home and Building Control

Honeywell Limited-Honeywell Limitée
740 Ellesmere Road
Scarborough, Ontario
M1P 2V9

Helping You Control Your World