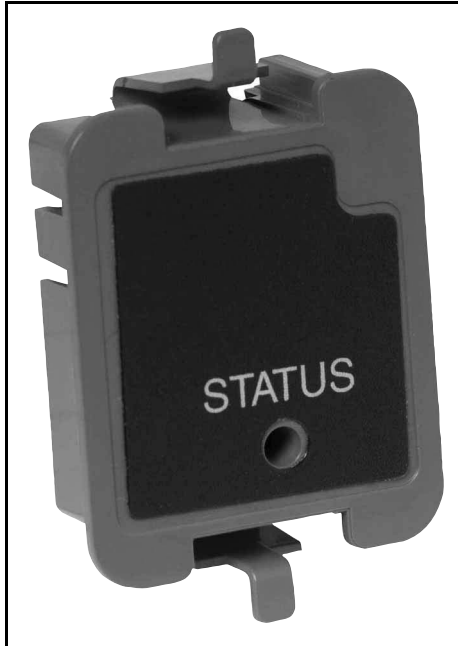


PM7910 Program Module for the R7910 SOLA HC or R7911 Sola SC

PRODUCT DATA



APPLICATION

The PM7910 Program Module is an optional plug-in device for the R7910 SOLA HC (Hydronic Control) and R7911 Sola SC (Steam Control). From the system level the S7999 System Operator Interface can direct the R7910/R7911 to transfer or retrieve parameter information with the Program Module.

FEATURES

- Can be removed or installed while the R7910 or R7911 is powered.
- Facilitate multiple controller setups.
- Backup and restore the R7910 programmable data including:
 - Non-safety parameter values
 - Parameter Control Blocks (information on how the parameter values may be modified)

SPECIFICATIONS

Supply Voltage: Power is Supplied by the R7910 or R7911

Ambient Storage Temperature: -40 to 150°F (-40 to 65°C)

Ambient Operating Temperature: -40 to 150°F (-40 to 65°C)

Indicator LEDs: One (Status LED) Blinking LED indicated the Program Module is properly seated and powered from the R7910/R7911.

The R7910 SOLA HC and R7911 Sola SC have a backup region that will allow the R7910/R7911's programmable data to be backed up and restored. This supports both replacement of an R7910 that has failed, and setup of an R7910/R7911. This process is described below.

All operations that read and write PM7910 data are password-protected.

Backup parameters to PROGRAM MODULE

The R7910 will copy the following data to the PROGRAM MODULE's R7910 backup region.

- A backup control header
- All Parameter Control Blocks (PCBs)
- All non-safety parameter values

Restore parameters from the PM7910

The R7910/R7911 will copy the parameter data described above from the PROGRAM MODULE back into an R7910/R7911. The R7910/R7911 will check the backup control header. If it indicates compatibility with the R7910/R7911, then restoring is allowed.

The PROGRAM MODULE restore process disables other R7910/R7911 processing (except display I/O), and finally the PROGRAM MODULE data is loaded into the R7910/R7911 from the R7910/R7911 backup region.



OPERATION

1. Remove the dust cover from the R7910 SOLA HC or R7911 Sola SC and install the PM7910 Program Module.
2. The R7910/R7911 may be powered while installing (or removing) the PM.
3. When the PM and the R7910/R7911 make connection, the status LED will blink on the PM.
4. Once the PM is installed, and the LED is blinking, the Backup or Restore functions are available. Going to the S7999 System Operator Interface Home screen (see Fig. 1) or going to the Configuration page on the S7999C Local operator interface and going to the display setup page.

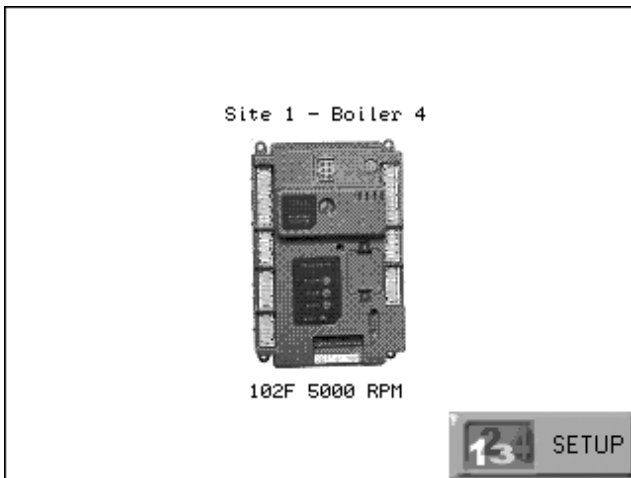


Fig. 1. S7999B1026 Home page.

5. Press the Setup button or the operator interface setup button. The screen shown in Fig. 2 will appear.

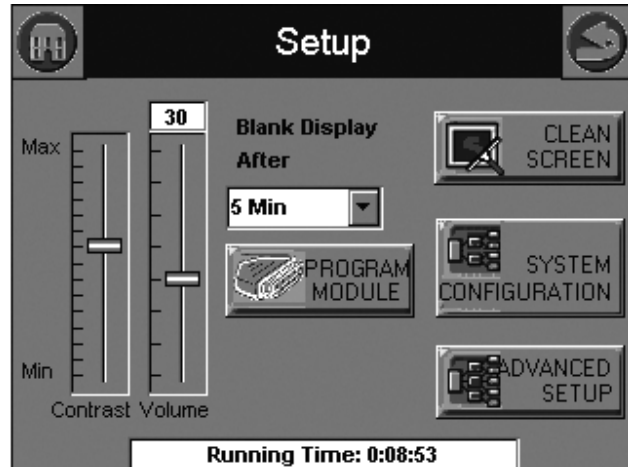


Fig. 2. S7999B/C Setup page.

6. Press the Program Module button on the Setup screen, as shown in Fig. 2.
7. Select the burner that contains the Program Module you will be working with, as shown in Fig. 3.

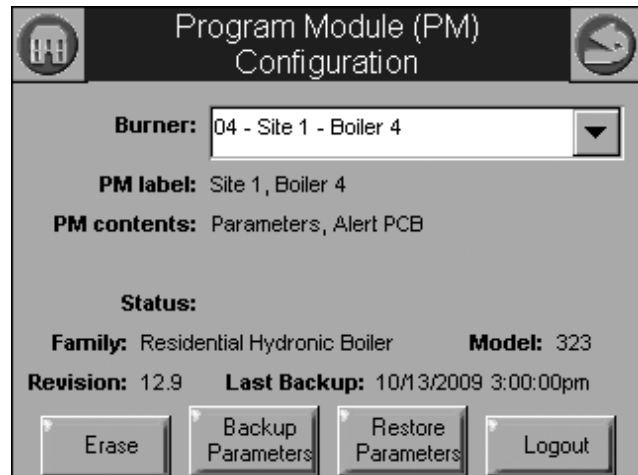


Fig. 3. S7999 Program Module Configuration page.

ORDERING INFORMATION

When purchasing replacement and modernization products from your TRADELINE® wholesaler or distributor, refer to the TRADELINE® Catalog or price sheets for complete ordering number.

If you have additional questions, need further information, or would like to comment on our products or services, please write or phone:

1. Your local Honeywell Automation and Control Products Sales Office (check white pages of your phone directory).
2. Honeywell Customer Care
1885 Douglas Drive North
Minneapolis, Minnesota 55422-4386

In Canada—Honeywell Limited/Honeywell Limitée, 35 Dynamic Drive, Toronto, Ontario M1V 4Z9.

International Sales and Service Offices in all principal cities of the world. Manufacturing in Australia, Canada, Finland, France, Germany, Japan, Mexico, Netherlands, Spain, Taiwan, United Kingdom, U.S.A.

Button Actions

NOTE: An installer password will be required to perform the below functions:

- **Erase**—will erase the contents of the installed Program Module for the selected Burner noted on the top.
- **Backup**—will copy non-safety parameter values and Backup Control Header data from the R7910/R7911 installed in the Burner location noted and save the data to the Program Module.
- **Restore**—will transfer all “Backup” non-safety parameters from the Program Module to the R7910/R7911 installed in the selected Burner.

When completed, the Program Module may be removed and installed in another R7910/R7911 for configuration of non-safety parameters or removed and stored for Backup should the original R7910/R7911 need to be replaced for any reason.

Install the Dust Cover into the R7910/R7911 to keep foreign material from getting into the Program Module Connector located in the R7910/R7911.

Backup Data

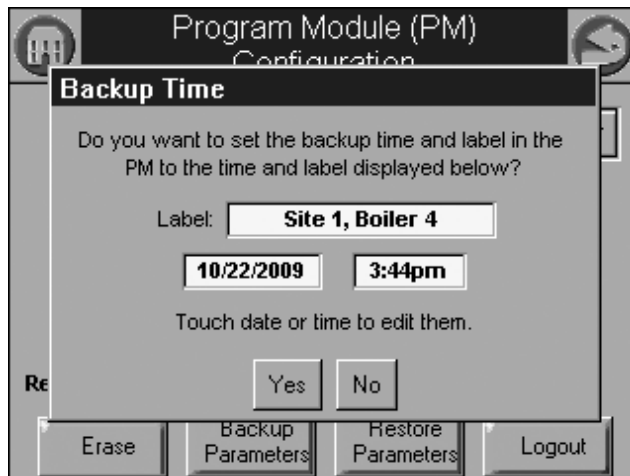


Fig. 4. Backup Data settings.

A 20 character label, date, and time can be entered in the Label field. This name appears when the Backup Parameters button is pressed.

If “Yes” is pressed, then a label will be written in the PM memory that will be shown on the S7999 Program Module page when the PM is inserted.

If “No” is pressed then no label will be written in the PM memory.

Automation and Control Solutions

Honeywell International Inc.
1985 Douglas Drive North
Golden Valley, MN 55422

Honeywell Limited-Honeywell Limitée
35 Dynamic Drive
Toronto, Ontario M1V 4Z9
customer.honeywell.com

® U.S. Registered Trademark
© 2009 Honeywell International Inc.
65-0300—03 E.K. Rev. 11-09
Printed in U.S.A.

Honeywell