

Industrial Valves

Valves for Large-Bore Diesel Engines



Product Overview

Product Overview

The family run company AS-Schneider, founded in 1875, with around 300 employees, is one of the world-wide leading manufacturers of Instrumentation Valves and Manifolds. The company shapes this branch with technological diversity and many innovations.

Our long experience of valves has given us a high level of skills with special emphasis on 2 main areas: Instrument Valves and Manifolds and

Valves for Large-Bore Diesel Engines. Within this area, AS-Schneider is supporting a customer base around the globe with a focus on the following four product lines:

- Indicator Valves
- Safety Relief Valves
- Fuel Valves
- Valves for turbo-charger cleaning equipment





Indicator Valves | S473 Series

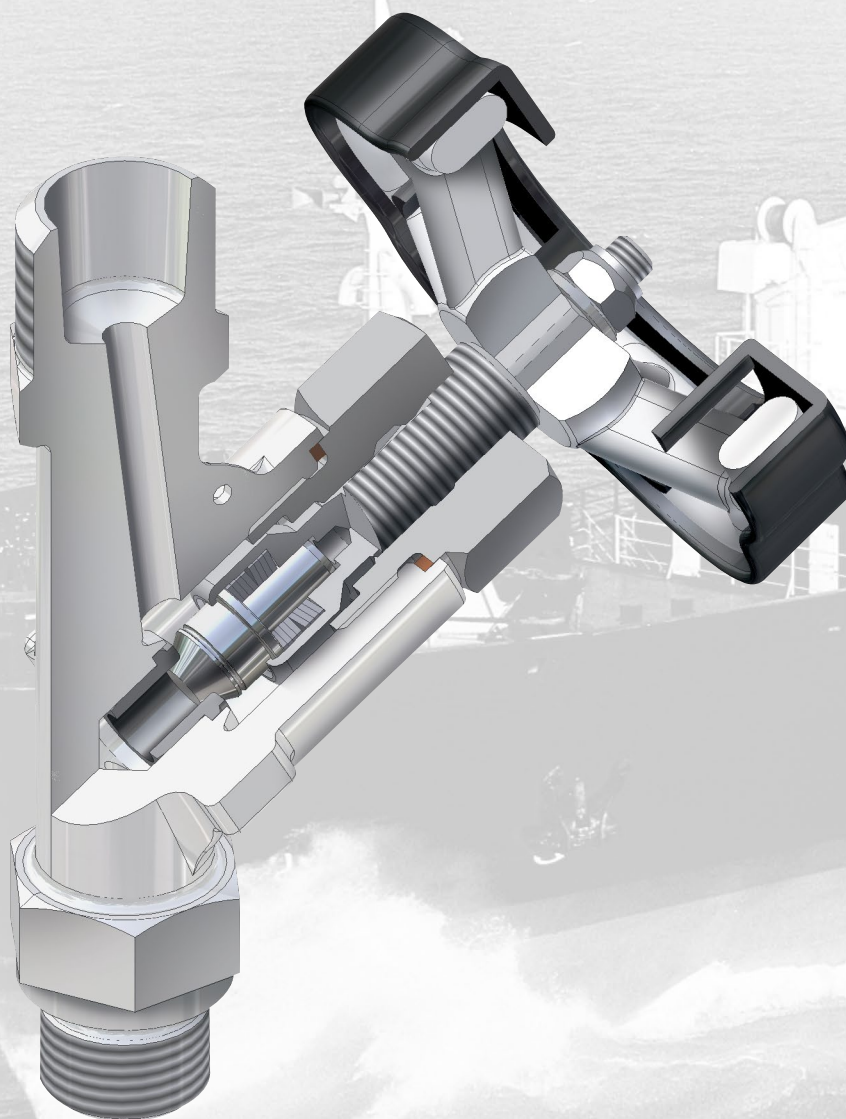
Indicator Valves | S473 Series

The core of the S473 Series Indicator Valve is the springloaded needle tip. This long established design prevents the valve from being opened due to engine vibration. It also allows easy operation even at high temperature service. Supplied c/w heat-protected handle.

Design Features

- Max. operating pressure: 300 bar
- Forged carbon steel valve body
- Stainless steel internal parts
- Indicator connection W 27 x 1/10" female cone or 1 3/16"-10 male cone
- Engine connection 3/4" Whitworth – 1/2" BSP – M20 – 1/2 NPT
- Special threads, engine or indicator end, are available

Both S473 and N473 Series incorporate low initial cost, trouble free performance and ease of operation.



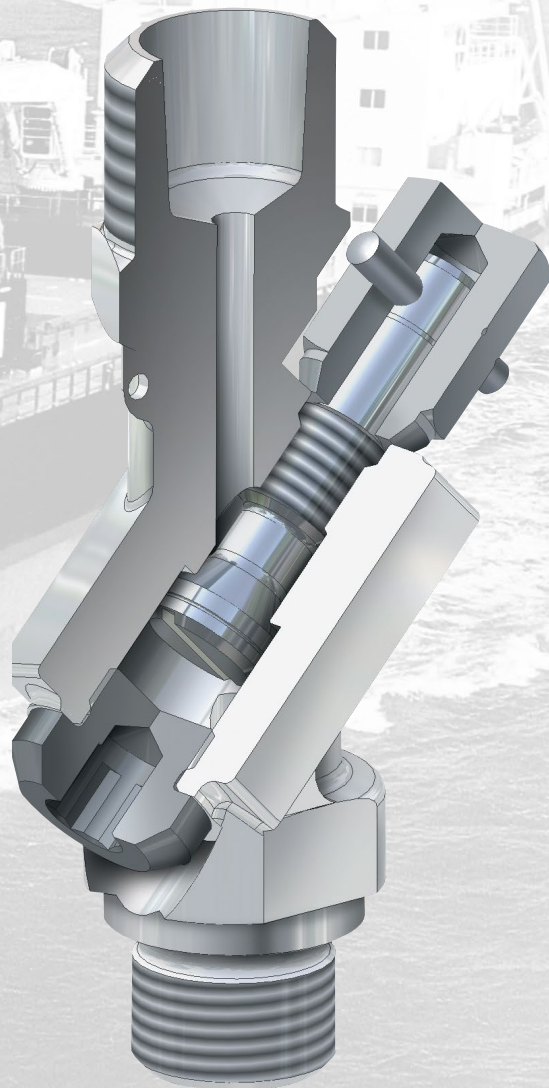
Indicator Valves | N473 Series

Allows a reduced installation radius at limited space. Valve opens "against engine pressure" and closes "with engine pressure".

Any movement of the valve stem due to engine vibration tends to tighten the valve stem against its seat thus eliminating the possibility of opening under operating conditions.

Design Features

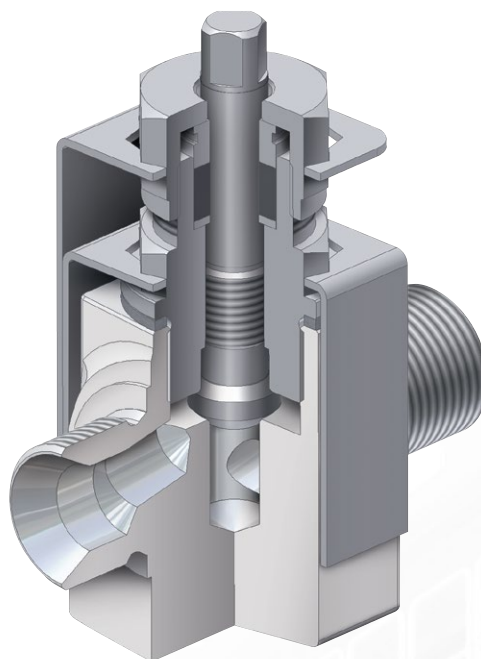
- Max. operating pressure: 300 bar
- Forged carbon steel valve body
- Stainless steel internal parts
- Indicator connection W 27x1/10" female cone or 1 3/16"-10 male cone
- Engine connection 3/4HH Whitworth – 1/2" BSP – M20 – 1/2 NPT
- Special threads, engine or indicator end, are available



Fuel Valves & Valves for turbo-charger cleaning equipment

Fuel Valves

Especially suited for heavy-oil operation. Equipped with graphite packing for high-temperature service. The back-seated valve stem allows the packing to be changed during operation.

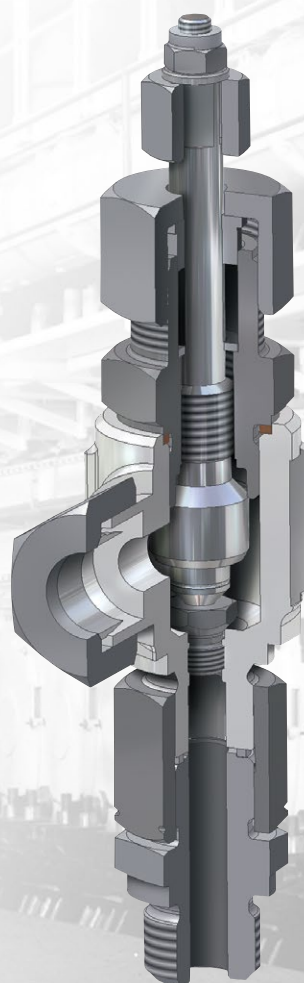


Valves for turbo-charger cleaning equipment

Used to clean the turbine blades of turbo-chargers. Suitable for exhaust-gas turbo-chargers of all manufacturers.

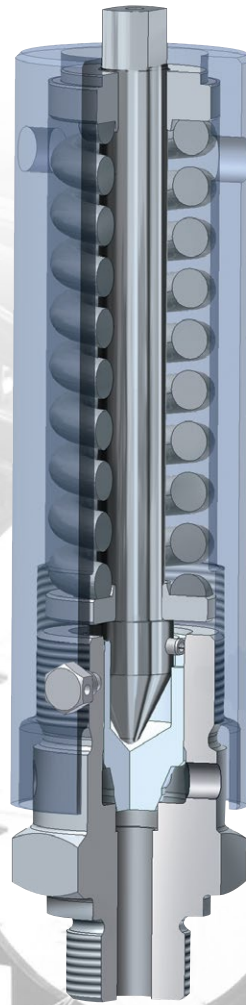
Design Features

- Forged stainless steel valve body
- Nozzle diameters from 2.0 up to 7.5 mm, in steps of 0.5 mm



Safety Relief Valves

Furnished in a variety of thread sizes and set pressures from 45 bar up to 300 bar.



Certification



**Armaturenfabrik Franz Schneider
GmbH + Co. KG**

Bahnhofplatz 12 | 74226 Nordheim
Deutschland / Germany

Tel: +49 71 33 101-0

Fax: +49 71 33 101-148



www.as-schneider.com



AS-Schneider Asia-Pacific Pte. Ltd.

970 Toa Payoh North, #02-12/14/15
Singapore 318992

Tel: +65 62 51 39 00

Fax: +65 62 51 39 90



www.as-schneider.sg



Armaturenfabrik Franz Schneider SRL

Sales Office:
Str. Basarabilor, Nr. 7 | 100036 Ploiesti
Romania

Tel: +40 244 384 963

Fax: +40 244 384 963

Production Plant:
Str. Mihai Viteazu, Nr. 327i | 507085 Harman
Jud. Braşov | Romania

Tel: +40 368 41 40 25

Fax: +40 368 41 40 26



www.as-schneider.ro



AS-Schneider Middle East FZE

P.O. Box 18749 | Dubai
United Arab Emirates

Tel: +971 4 880 85 75

Fax: +971 4 880 85 76



www.as-schneider.ae



AS-Schneider America, Inc.

17421 Village Green Dr | Houston, TX 77040
United States of America

Tel: +1 281 2 58 42 63

Fax: +1 281 5 06 79 35



www.as-schneider.com