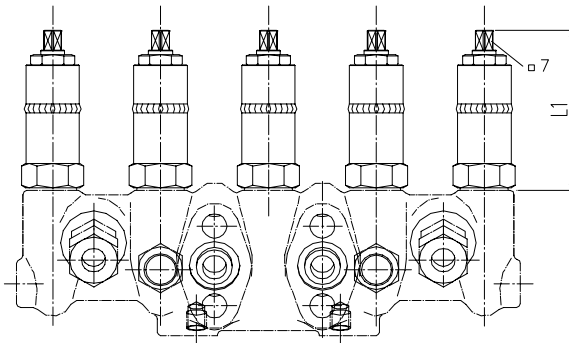
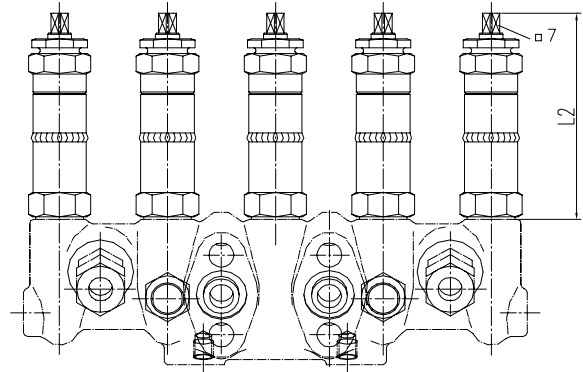


without safety packing (P1 to P2)

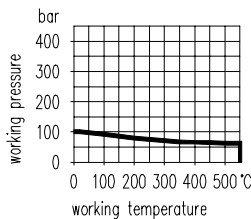


with safety packing (P5 to P6)

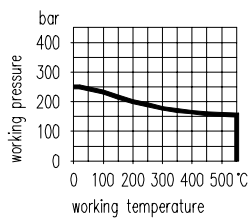


Pressure / temperature ratings based on head unit:

PN 100



PN 250



Bellow type	Dimensions [mm]		Code designation for head unit					
	L1	L2	without safety packing	DN 5	DN 8	with safety packing	DN 5	DN 8
PN 100	81	104	F5 P1	F8 P1	F5 P5	F8 P5		
PN 250	111	134	F5 P2	F8 P2	F5 P6	F8 P6		

Head Unit Components	DIN - Material number
Valve stem	1.4571
Needle tip	Stellite 6
Bellow	1.4571
Bonnet	1.4571
Safety packing	graphite

Explanation of the code designations		
Bellow execution	DN	Bellow type
F	e. g. 5	e. g. P6

The letter 'F' replaces the 'S' or 'N' of the standard type numbers and the bellow type is added.

For example: S541.38.225 »»» F541.38.225.00P1
 N541.37.135.01 »»» F541.37.135.01P2

Manifolds for oxygen service on request.

The bellows are submitted to a 100% Helium leak test.
 Leak rate: 10⁻⁸ mbar l/s.