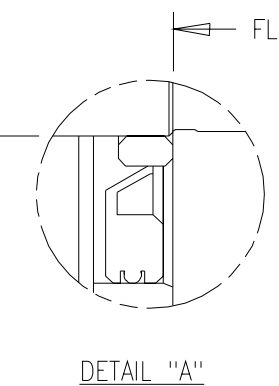


- SPECIFICATIONS:**
- MOTOR TYPE: 8 POLE, 3 PHASE, WYE WINDING, PERMANENT MAGNET ROTOR, TOTALLY ENCLOSED, NON VENTILATED.
 - CONTINUOUS STALL TORQUE: 3.6 Nm (32 LB-IN) MAX AT 155°C WINDING TEMPERATURE, IN A 40°C AMBIENT, WHEN MOUNTED ON A 12 INCH SQUARE X 1/2 INCH THICK ALUMINUM HEAT SINK.
 - OPERATING SPEED: 5000 RPM MAX.
 - Ke: 96 ±10% V/KRPM 0-PEAK (PHASE TO PHASE) AT 20-30°C.
 - 1024 SINUSOID/REV ENCODER, WITH 15 BIT SINGLE TURN ABSOLUTE POSITION DATA.
 - BRAKE: 24VDC, 4.18 Nm (37 LB-IN) MAX HOLDING TORQUE. BRAKE RELEASES WHEN VOLTAGE APPLIED, EITHER POLARITY.
 - EXTERNAL METAL MATERIAL: STAINLESS STEEL.
 - FOR ADDITIONAL SPECIFICATIONS SEE 7433-05-4104ESE.

PIN-OUT ENCODER CONNECTOR		PIN-OUT POWER CONNECTOR	
PIN	FUNCTION	PIN	FUNCTION
1	SIN +	A	U
2	SIN -	B	V
3	COS +	C	W
4	COS -	D	GROUND
5	DATA +	E	-
6	DATA -	F	BR+
7-10	-	G	BR-
11	+9 VDC	H	-
12	COM	L	-
13	TS +		
14	TS -		
15-17	-		



ProE Version 0 Modified 1

DXF FILE AVAILABLE

01	1014406	EQ	RELEASED		
REV	ECN	BY	REVISION DESCRIPTION	DATE	CHKR
UNLESS OTHERWISE SPECIFIED			DRAWN BY	DATE	DESIGN ENGR
DO NOT SCALE DRAWING			EQ	03-18-05	
DIMENSIONS ARE IN MILLIMETERS			MPS-B330P-SJ54DA,ESM		
WITH INCHES REFERENCED [X.X]					
UNTOLERANCED DIMENSIONS ARE REFERENCE			PART NO.		
THIRD ANGLE PROJECTION			7433-05-4104ESM		
SCALE : 1		DWG SIZE	SHEET		
0.333		B	1 OF 1		

Allen-Bradley