

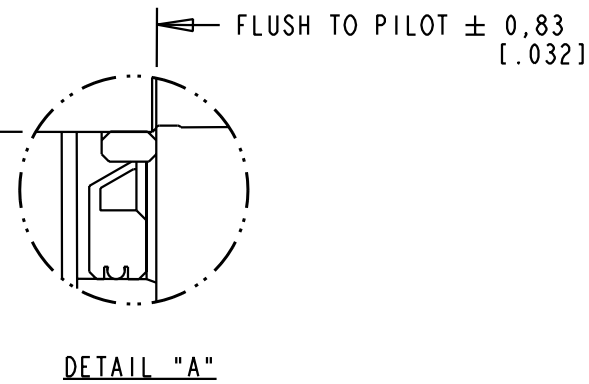
SPECIFICATIONS:

1. MOTOR TYPE: 8 POLE, 3 PHASE, WYE WINDING, PERMANENT MAGNET ROTOR, TOTALLY ENCLOSED, NON VENTILATED.
2. CONTINUOUS STALL TORQUE: 3.6 Nm (32 LB-IN) MAX AT 155°C WINDING TEMPERATURE, IN A 40°C AMBIENT, WHEN MOUNTED ON A 12 INCH SQUARE X 1/2 INCH THICK ALUMINUM HEAT SINK.
3. OPERATING SPEED: 5000 RPM MAX.
4. K_e : 48 ±10% V/KRPM 0-PEAK (PHASE TO PHASE) AT 20-30°C.
5. 1024 SINUSOID/REV ENCODER, WITH 15 BIT SINGLE TURN ABSOLUTE POSITION DATA.
6. EXTERNAL METAL MATERIAL: STAINLESS STEEL.
7. FOR ADDITIONAL SPECIFICATIONS SEE 7433-00-4302ESE.

PIN-OUT	
ENCODER CONNECTOR	
PIN	FUNCTION
1	SIN +
2	SIN -
3	COS +
4	COS -
5	DATA +
6	DATA -
7-8	-
9	+5 VDC
10	COM
11-12	-
13	TS +
14	TS -
15-17	-

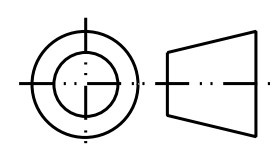
PIN-OUT	
POWER CONNECTOR	
PIN	FUNCTION
A	U
B	V
C	W
D	GROUND
E-H	-
L	-

Ø16,94±,05
[.667±.002]



ProE Version 0 Modified 1
DXF FILE AVAILABLE

01	1014405	EQ	RELEASED		
REV	ECN	BY	REVISION DESCRIPTION	DATE	CHKR
UNLESS OTHERWISE SPECIFIED			DRAWN BY	DATE	DESIGN ENGR
DO NOT SCALE DRAWING			EQ	04-25-05	--
DIMENSIONS ARE IN MILLIMETERS			MPS-A330P-SJ52DA,ESM		
WITH INCHES REFERENCED [X.X]			THIRD ANGLE PROJECTION		
UNTOLERANCED DIMENSIONS ARE REFERENCE			PART NO. 7433-00-4302ESM		
SCALE: 1		DWG SIZE		SHEET	
0.333		B		1 OF 1	



Allen-Bradley
QUALITY