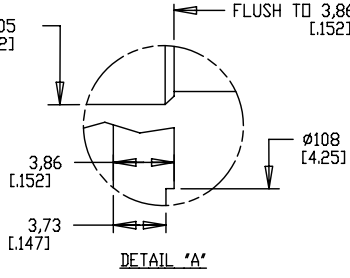


MODEL	LB	LD	LE
MPM-x2152	363,5 [14.31]	323,3 [12.73]	252,2 [9.93]
MPM-x2153	414,3 [16.31]	374,1 [14.73]	303 [11.93]
MPM-x2154	465,1 [18.31]	424,9 [16.73]	353,8 [13.93]

PIN-OUT	
PIN	FUNCTION
U	U
V	V
W	W
⊕	GND
+	MBR+
-	MBR-
1	-
2	-

PIN-OUT	
RESOLVER CONNECTOR	
PIN	FUNCTION
1	S2
2	S4
3	S1
4	S3
5	R1
6	R2
7	-
8	-
9	-
10-12	-
13	TS +
14	TS -
15-17	-



1

NOTE:  
1 DXF FILE OF THIS DRAWING MUST BE SCALED TO LENGTH, SEE CHART ABOVE. MODEL SHOWN IS MPM-x2153x-2J74AA.  
2. 3D STEP (.stp) FILES AVAILABLE AT ALL LENGTHS.

REFERENCES		DESCRIPTION	CAD DOCUMENT	
VERSION	UNLESS OTHERWISE SPECIFIED	ESM,MPM-x215xx-2J74AA	Allen-Bradley	
00	DO NOT SCALE DRAWING DIMENSIONS ARE IN MILLIMETERS WITH INCHES REFERENCED (X) UNTOLERANCED DIMENSIONS ARE REFERENCE	<b>Rockwell Automation</b>		
	3RD ANGLE PROJECTION	DR. SJ	DATE 7/22/09	SHEET 1 OF 1
		DXF 2D DR STEP 3D FILE AVAILABLE		DWG. DOCUMENT NUMBER SIZE 10000068022

B