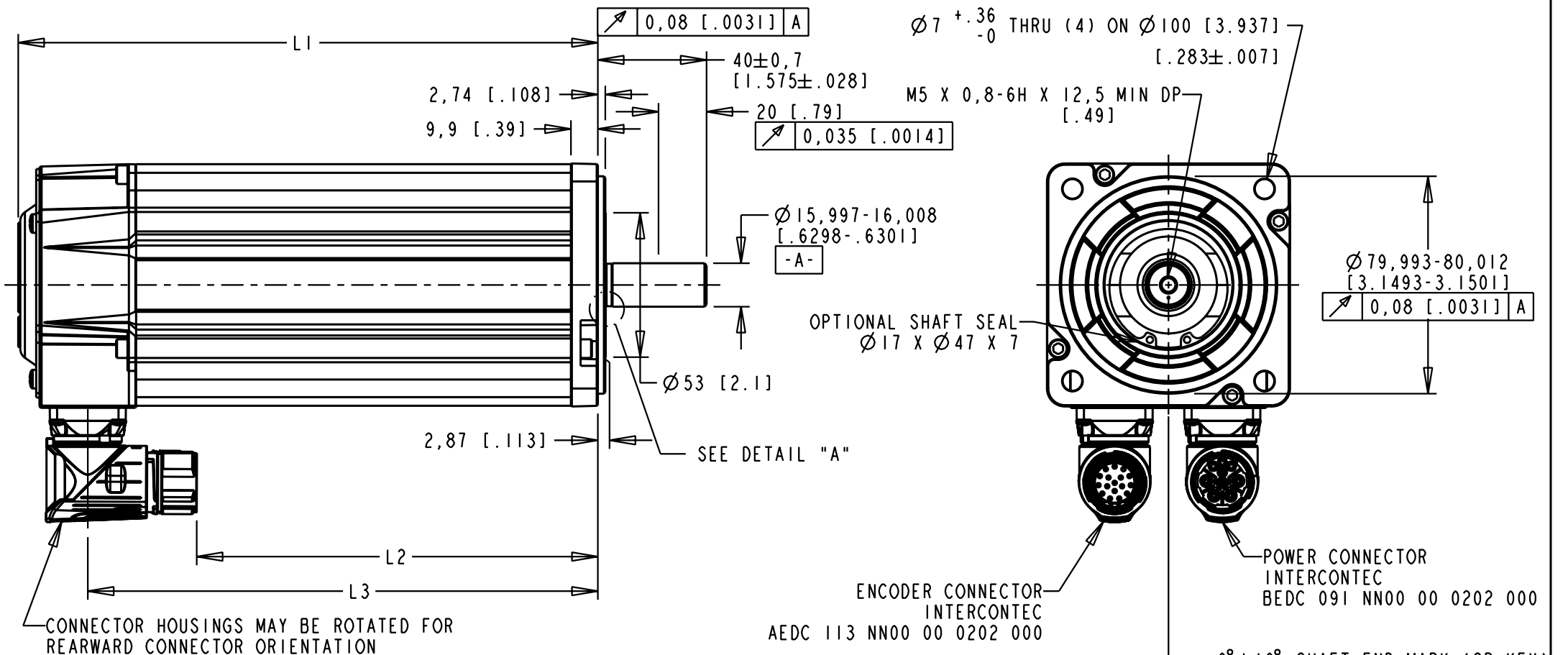


MODEL	L1	L2	L3
310	163 [6.40]	97 [3.81]	137 [5.39]
320	188 [7.40]	123 [4.81]	162 [6.39]
330	213 [8.40]	148 [5.81]	188 [7.39]

PIN-OUT	
POWER CONNECTOR	
PIN	FUNCTION
A	U
B	V
C	W
D	GND
E	-
F	MBRK+
G	MBRK-
H	-
L	-

PIN-OUT	
ENCODER CONNECTOR	
PIN	FUNCTION
1	AM +
2	AM -
3	BM +
4	BM -
5	IM +
6	IM -
7	-
8	ABS
9	EPWR 5V
10	ECOM
11-12	-
13	TS +
14	TS -
15	S1
16	S2
17	S3

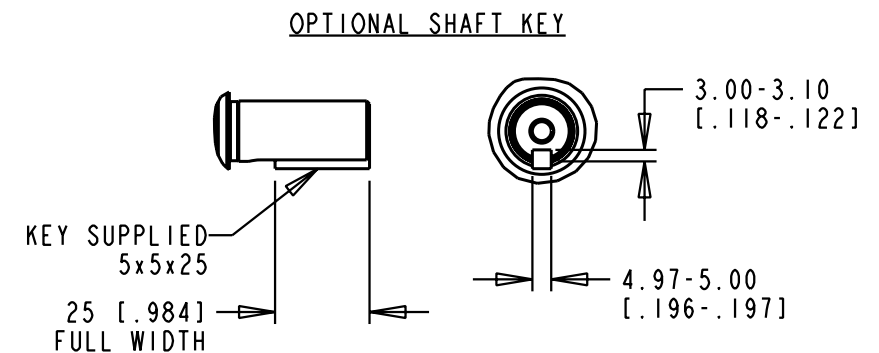
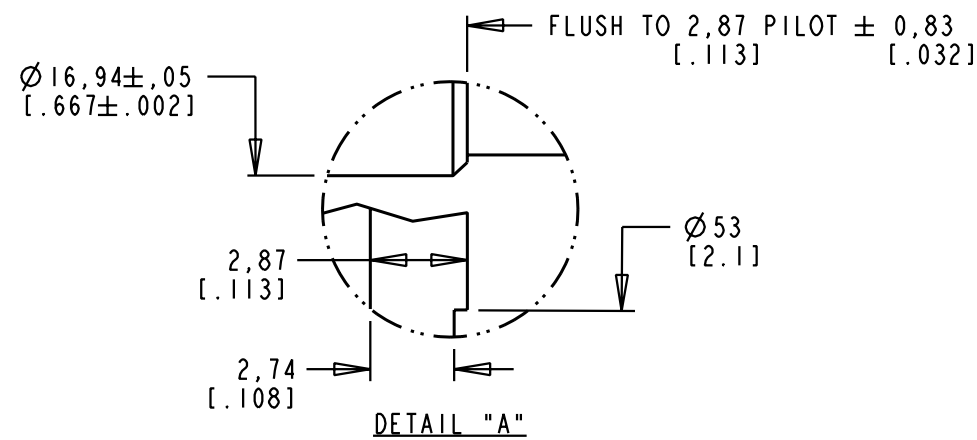


CONNECTOR HOUSINGS MAY BE ROTATED FOR REARWARD CONNECTOR ORIENTATION

ENCODER CONNECTOR INTERCONTEC AEDC 113 NN00 00 0202 000

POWER CONNECTOR INTERCONTEC BEDC 091 NN00 00 0202 000

0°±10° SHAFT END MARK (OR KEY) ORIENTATION FOR ENCODER IM+ (INDEX PULSE) AT LOGIC 1 (HI) OUTPUT STATE



NOTE:

1 DXF OF THIS DRAWING MUST BE SCALED TO LENGTH ON CHART (310, 320). MODEL SHOWN IS MPL-x330x-Hx74AA.

2. 3D STEP (.stp) FILES AVAILABLE AT ALL LENGTHS.

REFERENCES		DESCRIPTION		CAD DOCUMENT	
VERSION/ CHANGE NUMBER	UNLESS OTHERWISE SPECIFIED DO NOT SCALE DRAWING DIMENSIONS ARE IN MILLIMETERS WITH INCHES REFERENCED (X) UNTOLERANCED DIMENSIONS ARE REFERENCE 3RD ANGLE PROJECTION	MPL-x3xxx-Hx74AA, ESM		Allen-Bradley	
01	10005078	DR. WKG	DATE 7 FEB 08	SHEET 1	OF 1
00	10003357	DXF 2D OR STEP 3D FILE AVAILABLE		DWG. SIZE B	DOCUMENT NUMBER 10000014300

Rockwell Automation

