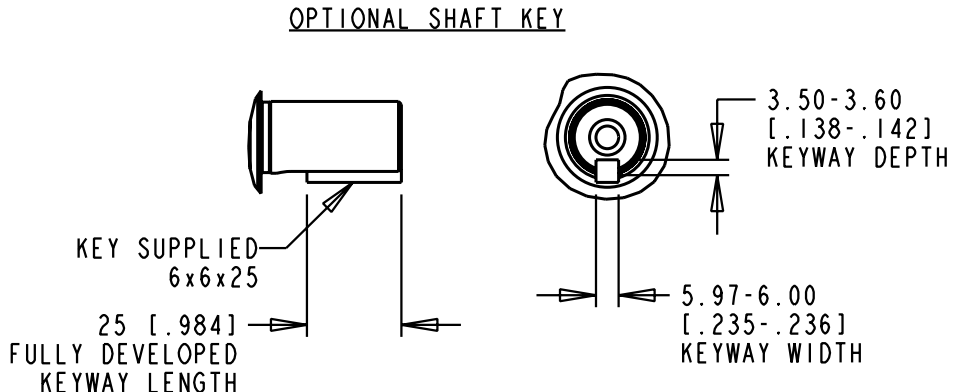
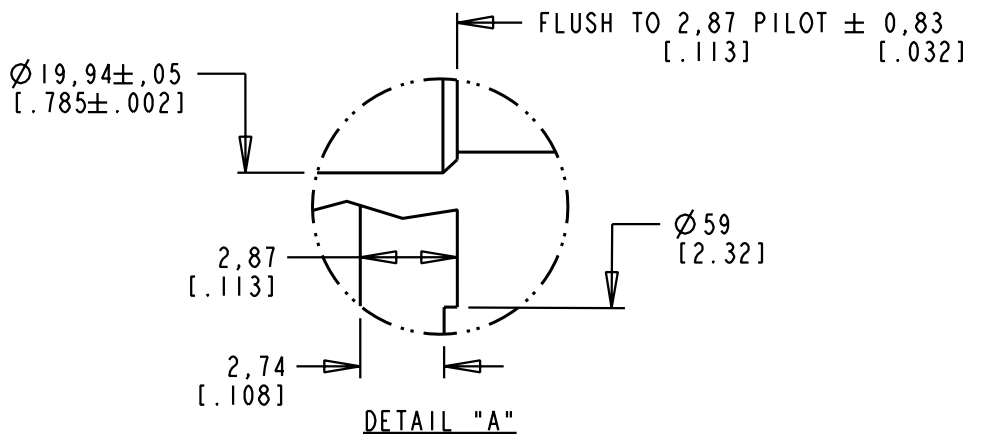


| MODEL | L1         | L2         | L3         |
|-------|------------|------------|------------|
| 420   | 198 [7.81] | 133 [5.22] | 173 [6.80] |
| 430   | 224 [8.81] | 158 [6.22] | 198 [7.80] |

| PIN-OUT POWER CONNECTOR |          | PIN-OUT ENCODER CONNECTOR |          |
|-------------------------|----------|---------------------------|----------|
| PIN                     | FUNCTION | PIN                       | FUNCTION |
| A                       | U        | 1                         | SIN +    |
| B                       | V        | 2                         | SIN -    |
| C                       | W        | 3                         | COS +    |
| D                       | GND      | 4                         | COS -    |
| E                       | -        | 5                         | DATA +   |
| F                       | MBRK+    | 6                         | DATA -   |
| G                       | MBRK-    | 7-8                       | -        |
| H                       | -        | 9-10                      | -        |
| L                       | -        | 11                        | EPWR 9V  |
|                         |          | 12                        | ECOM     |
|                         |          | 13                        | TS +     |
|                         |          | 14                        | TS -     |
|                         |          | 15-17                     | -        |



- NOTE:
- DXF OF THIS DRAWING MUST BE SCALED TO LENGTH ON CHART (420). MODEL SHOWN IS MPL-B430x-xx74AA.
  - 3D STEP (.stp) FILES AVAILABLE AT ALL LENGTHS.
  - COVERS SINGLE AND MULTI-TURN ABSOLUTE ENCODER 460V MODELS (i.e., MPL-B4xxx-Mx74AA and MPL-B4xxx-Sx74AA).

| REFERENCES                |   | DESCRIPTION                      | CAD DOCUMENT      |                             |
|---------------------------|---|----------------------------------|-------------------|-----------------------------|
| VERSION/<br>CHANGE NUMBER | UNLESS OTHERWISE SPECIFIED<br>DO NOT SCALE DRAWING DIMENSIONS ARE IN MILLIMETERS WITH INCHES REFERENCED [X] UNTOLERANCED DIMENSIONS ARE REFERENCE<br>3RD ANGLE PROJECTION | MPL-B4xxx-xx74AA, ESM            | Allen-Bradley<br> |                             |
| 00 10005711               |   | DR. D. HECKSEL   DATE 05/27/08   |                   |                             |
|                           |   | DXF 2D OR STEP 3D FILE AVAILABLE | DWG. SIZE B       | DOCUMENT NUMBER 10000020747 |