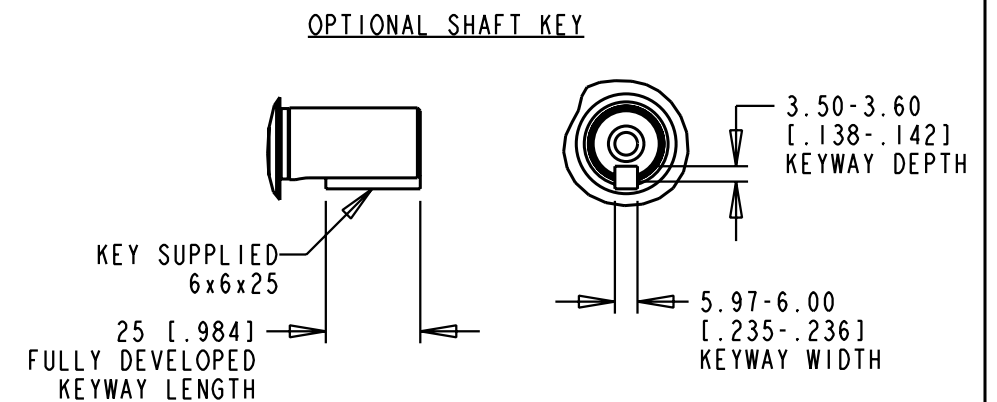
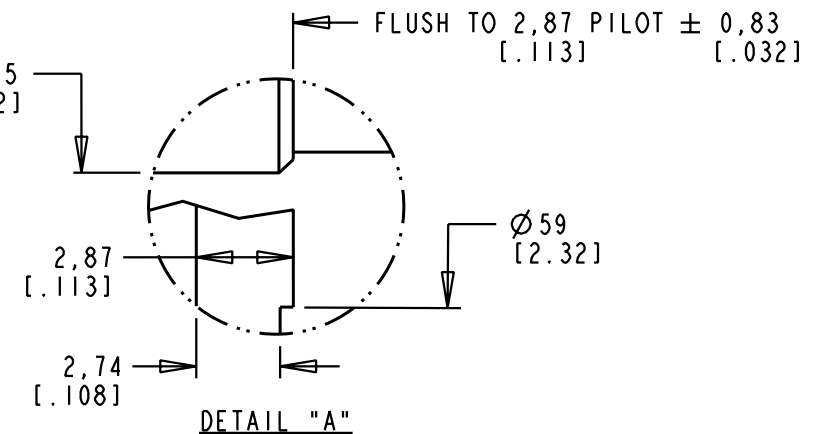


MODEL	L1	L2	L3
420	198 [7.81]	133 [5.22]	173 [6.80]
430	224 [8.81]	158 [6.22]	198 [7.80]

PIN-OUT POWER CONNECTOR		PIN-OUT ENCODER CONNECTOR	
PIN	FUNCTION	PIN	FUNCTION
A	U	1	SIN +
B	V	2	SIN -
C	W	3	COS +
D	GND	4	COS -
E	-	5	DATA +
F	MBRK+	6	DATA -
G	MBRK-	7-8	-
H	-	9	EPWR 5V
L	-	10	ECOM
		11-12	-
		13	TS +
		14	TS -
		15-17	-



- NOTE:
- DXF OF THIS DRAWING MUST BE SCALED TO LENGTH ON CHART (420). MODEL SHOWN IS MPL-A430x-xx74AA.
  - 3D STEP (.stp) FILES AVAILABLE AT ALL LENGTHS.
  - COVERS SINGLE AND MULTI-TURN ABSOLUTE ENCODER 230V MODELS (i.e., MPL-A4xxx-Mx74AA and MPL-A4xxx-Sx74AA).

REFERENCES		DESCRIPTION	CAD DOCUMENT	
VERSION/ CHANGE NUMBER	UNLESS OTHERWISE SPECIFIED DO NOT SCALE DRAWING DIMENSIONS ARE IN MILLIMETERS WITH INCHES REFERENCED (X) UNTOLERANCED DIMENSIONS ARE REFERENCE 3RD ANGLE PROJECTION	MPL-A4xxx-xx74AA, ESM	Allen-Bradley	
00 10005711		<b>Rockwell Automation</b>		
		DR. D. HECKSEL   DATE 05/23/08	SHEET 1	OF 1
		DXF 2D OR STEP 3D FILE AVAILABLE	DWG. SIZE B	DOCUMENT NUMBER 10000020741