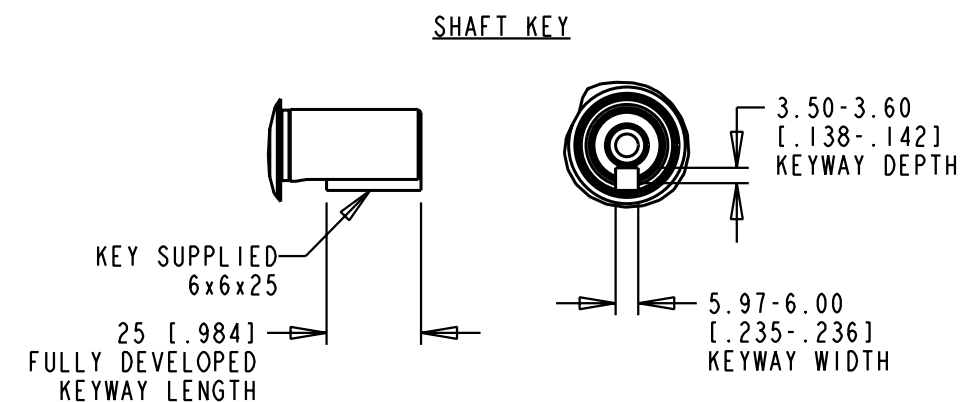
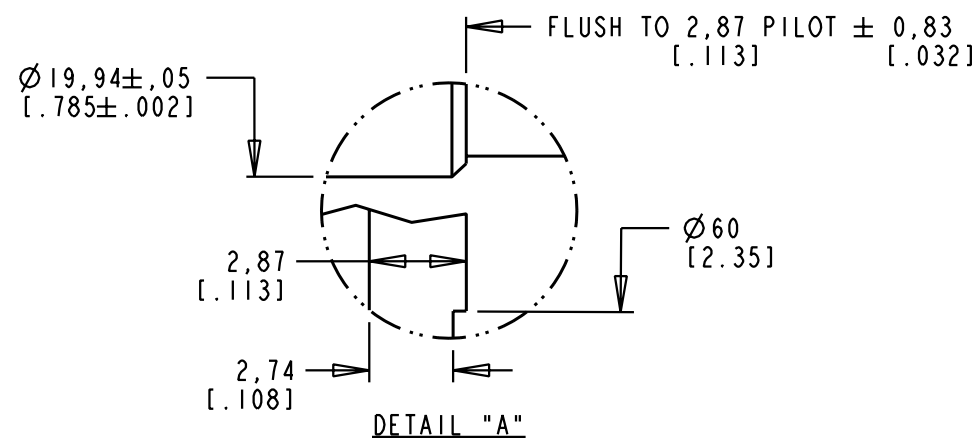


| PIN-OUT POWER CONNECTOR | | PIN-OUT ENCODER CONNECTOR | |
|-------------------------|----------|---------------------------|----------|
| PIN | FUNCTION | PIN | FUNCTION |
| A | U | 1 | SIN + |
| B | V | 2 | SIN - |
| C | W | 3 | COS + |
| D | GND | 4 | COS - |
| E | - | 5 | DATA + |
| F | MBRK+ | 6 | DATA - |
| G | MBRK- | 7-8 | - |
| H | - | 9 | EPWR 5V |
| L | - | 10 | ECOM |
| | | 11-12 | - |
| | | 13 | TS + |
| | | 14 | TS - |
| | | 15-17 | - |



NOTE:

1 MODEL SHOWN IS MPF-x430x-xJ74BA.

2. 3D STEP (.stp) FILES AVAILABLE AT ALL LENGTHS.

3. COVERS SINGLE AND MULTI-TURN ABSOLUTE ENCODER 230V MODELS (i.e., MPF-A4xxx-MJ74BA and MPF-A4xxx-SJ74BA).

| REFERENCES | | DESCRIPTION | CAD DOCUMENT | |
|---------------------------|---|----------------------------------|-----------------|--|
| VERSION/ CHANGE NUMBER | UNLESS OTHERWISE SPECIFIED DO NOT SCALE DRAWING DIMENSIONS ARE IN MILLIMETERS WITH INCHES REFERENCED (X) UNTOLERANCED DIMENSIONS ARE REFERENCE 3RD ANGLE PROJECTION | MPF-A4xxx-xJ74BA, ESM | Allen-Bradley | |
| 00 | 10005711 | Rockwell Automation | SHEET 1 OF 1 | |
| | | DR. D. HECKSEL DATE 05/23/08 | DOCUMENT NUMBER | |
| | | DXF 2D OR STEP 3D FILE AVAILABLE | 10000020827 | |