

SPECIFICATIONS:

1. MOTOR INFORMATION

- MOTOR TYPE: VARIABLE SPEED AC
- FRAME SIZE: D1.1815
- RATING: 55.9 KW
- VOLTAGE: 400
- ENCLOSURE: TOTALLY ENCLOSED IP54
- MOUNTING: F001
- COOLING: BLDYFR COOLED IC416
- DRIVE METHOD: COUPLED OR BELTED
- ACCESSORIES: ENCODER & BRAKE

2. CONTINUOUS STALL TORQUE: 360 Nm  
MAX AT 155°C WINDING TEMPERATURE, IN A 40°C AMBIENT

3. OPERATING SPEED: 1500 BASE SPEED / 3000 RPM MAX

4. 1024 SINUSOID/REV ENCODER, WITH SINGLE-TURN ABSOLUTE POSITION DATA

5. FOR ADDITIONAL SPECIFICATIONS SEE 1000000331

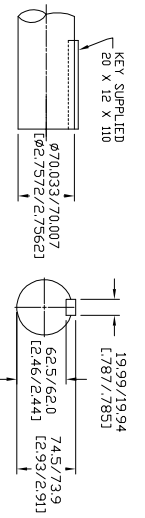
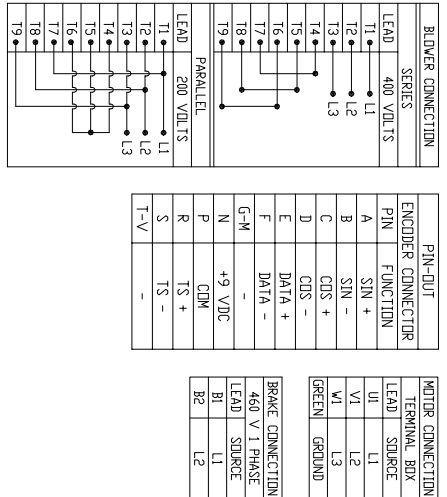
6. SHAFT HEIGHT WILL NOT BE EXCEEDED SHIMS UP TO 0.5 MM IN THICKNESS USUALLY REQUIRED FOR COUPLED OR GEARED MACHINES.

7. THE ISA EXTENSIONS ARE ACCORDING TO DIN 748, TOLERANCES ARE BASED ON FOR DIAMETERS ABOVE.

8. MAX SHAFT TIR .06 [0.002]  
MAX FACE TIR .13 [0.005]

9. MOTOR WEIGHT 497 KG. (1096 LBS) (MAY VARY 15%)

10. BRAKE: 400VAC 48 Nm MAX. HOLDING TORQUE, BRAKE RELEASES WHEN VOLTAGE APPLIED



NOTE: ALL DRAWING MODIFICATIONS REQUIRE CUSTOMER APPROVAL

SUPPLIER PART NUMBER: L18M5263

REFERENCES		DESCRIPTION		CAD DOCUMENT	
VERSION/CHANGE NUMBER	TOLERANCES UNLESS OTHERWISE SPECIFIED	HPK-E1815C-SB44BA.ESM		SHEET 1 OF 1	
DO NOT SCALE DRAWING DIMENSIONS ARE IN INCHES REFERENCED UNLESS OTHERWISE INDICATED	UNLESS OTHERWISE SPECIFIED	Rockwell Automation		Allen-Bradley	
DR	AMB	DATE 09-19-06	DXF FILE AVAILABLE		
DWG SIZE B	SHEET NUMBER		10000000331		