

**SPECIFICATIONS:**

**1. MOTOR INFORMATION**

MOTOR TYPE: VARIABLE SPEED AC  
 FRAME SIZE: DL1815Y  
 RATING: 55.9 KW  
 VOLTAGE: 460  
 ENCLOSURE: TOTALLY ENCLOSED IP54  
 MOUNTING: FOOT  
 COOLING: BLOWER COOLED IC416  
 DRIVE METHOD: COUPLED OR BELTED  
 ACCESSORIES: ENCODER

**2. CONTINUOUS STALL TORQUE:** 360 Nm  
 MAX AT 155°C WINDING TEMPERATURE, IN A 40°C AMBIENT

**3. OPERATING SPEED:** 1500 BASE SPEED / 3000 RPM MAX.

**4. 1024 SINUSOID/REV ENCODER, WITH SINGLE-TURN ABSOLUTE POSITION DATA**

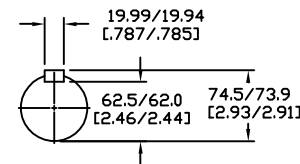
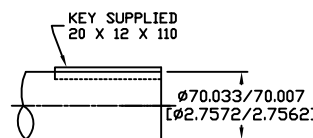
**5. FOR ADDITIONAL SPECIFICATIONS SEE L18M5163ESE**

**6. SHAFT HEIGHT WILL NOT BE EXCEEDED SHIMS UP TO 0.5 MM IN THICKNESS USUALLY REQUIRED FOR COUPLED OR GEARED MACHINES.**

**7. SHAFT EXTENSIONS ARE ACCORDING TO DIN 748, TOLERANCES ARE BASED ON THE ISA FITTING SYSTEM USING k6 FOR DIAMETERS UP TO 50MM AND m6 FOR DIAMETERS ABOVE.**

**8. MAX SHAFT TIR .06 [0.02] MAX FACE TIR .13 [0.05]**

**9. MOTOR WEIGHT 474 KG. [1045 LBS] (MAY VARY 15%)**



DRIVE END SHAFT DETAIL SPEC (9)

BLOWER CONNECTION	
STAR CONNECTION	
LEAD	460 VOLTS
U1	R
V1	S
W1	T
U2	
V2	
W2	
GRN/YEL	GROUND
DELTA CONNECTION	
LEAD	230 VOLTS
U1	
U2	R
V1	S
V2	
W1	T
W2	
GRN/YEL	GROUND

PIN-OUT	
ENCODER CONNECTOR	
PIN	FUNCTION
A	SIN +
B	SIN -
C	CDS +
D	CDS -
E	DATA +
F	DATA -
G-M	-
N	+9 VDC
P	COM
R	TS +
S	TS -
T-V	-

MOTOR CONNECTION	
TERMINAL BOX	
LEAD	SOURCE
U1	L1
V1	L2
W1	L3
GREEN	GROUND

NOTE: ALL DRAWING MODIFICATIONS REQUIRE CUSTOMER APPROVAL

REV	C/R	REVISION DESCRIPTION	DATE	BY
		UNLESS OTHERWISE SPECIFIED		
		DO NOT SCALE DRAWING		
		DIMENSIONS ARE IN MILLIMETERS		
		WITH INCHES REFERENCED (X.X)		
		UNTOLERANCED DIMENSIONS ARE REFERENCE		
		THIRD ANGLE PROJECTION		
		DRAWN BY GWS	DATE 3/01/06	APPROVED BY WEM
		CATALOG NO. HPK-B1815C-SA42BA-ESM		
		PART NO. L18M5163		
		SCALE: N/A	DWG SIZE: C	SHEET 1 OF 1

DXF FILE AVAILABLE

