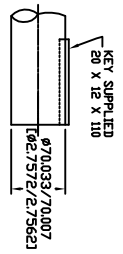


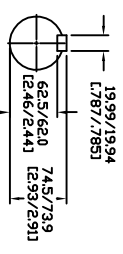
SPECIFICATIONS:

1. MOTOR INFORMATION

- MOTOR TYPE: VARIABLE SPEED AC
 - FRAME SIZE: DL1815Y
 - RATING: 55.9 KW
 - VOLTAGE: 460
 - ENCLOSURE: TOTALLY ENCLOSED IP54
 - Mounting: FOOT
 - Cooling: Blower Cooled IC416
 - Drive Method: Coupled Dr Belted
 - Accessories: Encoder & Brake
- 2. CONTINUOUS STALL TORQUE: 360 Nm**
 MAX AT 155°C WINDING TEMPERATURE, IN A 40°C AMBIENT
- 3. OPERATING SPEED: 1500 BASE SPEED / 3000 RPM MAX.**
- 4. 1024 SINUSOID/REV ENCODER, WITH MULTI-TURN ABSOLUTE POSITION DATA**
- 5. FOR ADDITIONAL SPECIFICATIONS SEE L18MS213ESE**
- 6. SHAFT HEIGHT WILL NOT BE EXCEEDED**
 SHIMS UP TO 0.5 MM IN THICKNESS USUALLY REQUIRED FOR COUPLED DR GEARED MACHINES.
- 7. SHAFT EXTENSIONS ARE ACCORDING TO DIN 748. TOLERANCES ARE BASED ON THE ISA FITTING SYSTEM USING K6 FOR DIAMETERS UP TO 50MM AND M6 FOR DIAMETERS ABOVE.**
- 8. MAX SHAFT TIR .06 L0023**
 MAX FACE TIR .13 L0051
- 9. MOTOR WEIGHT 497 KG (1096 LBS) (MAY VARY 15%)**
- 10. BRAKE RELEASES WHEN VOLTAGE APPLIED**



DRIVE END SHAFT DETAIL SPEC (9)

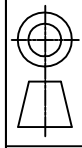


BLOWER CONNECTION		SERIES		PIN-OUT		ENCODER CONNECTOR		MOTOR CONNECTION		BRAKE CONNECTION	
LEAD	460 VOLTS	LEAD	460 VOLTS	LEAD	460 V 1 PHASE	LEAD	460 V 1 PHASE	LEAD	460 V 1 PHASE	LEAD	460 V 1 PHASE
11	L1	11	L1	A	SIN +	U1	L1	U1	L1	U1	L1
12	L2	12	L2	B	SIN -	V1	L2	V1	L2	V1	L2
13	L3	13	L3	C	COS +	W1	L3	W1	L3	W1	L3
14	L3	14	L3	D	COS -	X1	L3	X1	L3	X1	L3
15	L3	15	L3	E	DATA +	Y1	L3	Y1	L3	Y1	L3
16	L3	16	L3	F	DATA -	Z1	L3	Z1	L3	Z1	L3
17	L3	17	L3	G-M	-	AA	L3	AA	L3	AA	L3
18	L3	18	L3	N	+9 VDC	BB	L3	BB	L3	BB	L3
19	L3	19	L3	P	COM	CC	L3	CC	L3	CC	L3
				R	TS +	DD	L3	DD	L3	DD	L3
				S	TS -	EE	L3	EE	L3	EE	L3
				T-V	-	FF	L3	FF	L3	FF	L3

DXF FILE AVAILABLE

NOTE: ALL DRAWING MODIFICATIONS REQUIRE CUSTOMER APPROVAL

REV	C/R	REVISION DESCRIPTION	DATE	BY
		UNLESS OTHERWISE SPECIFIED		
		DO NOT SCALE DRAWING		
		DIMENSIONS ARE IN MILLIMETERS		
		WITH INCHES REFERENCED EXCEPT		
		WHERE SHOWN OTHERWISE		
		THIRD ANGLE PROJECTION		
		DRAWN BY: GWS	DATE: 3/06/06	APPROVED BY: WEM
		CATALOG NO: HPK-B1815C-MC44BA-ESM		
		PART NO: L18MS213		
		SCALE: 1/4" = 1"	DWG SIZE: C	SHEET: 1 OF 1



Allen-Bradley
 SCALE: 1/4" = 1"
 DWG SIZE: C
 SHEET: 1 OF 1