

SPECIFICATIONS:

1. MOTOR INFORMATION
MOTOR TYPE: VARIABLE SPEED AC
FRAME SIZE: RDL1609Y
RATING: 484 KW
VOLTAGE: 460
ENCLOSURE: TOTALLY ENCLOSED IP54
MOUNTING: FLANGE (350mm BOLT CIRCLE)
COOLING: BLOWER COOLED IC416
DRIVE METHOD: COUPLED OR BELTED
ACCESSORIES: ENCODER & BRAKE
2. CONTINUOUS STALL TORQUE: 156 Nm
MAX AT 155°C WINDING TEMPERATURE, IN A 40°C AMBIENT
3. OPERATING SPEED: 3000 BASE SPEED / 5000 RPM MAX.
4. 1024 SINUSOID/REV ENCODER, WITH SINGLE-TURN ABSOLUTE POSITION DATA
5. FOR ADDITIONAL SPECIFICATIONS SEE L16MS207E
6. SHAFT HEIGHT WILL NOT BE EXCEEDED SHIMS UP TO 0.5 MM IN THICKNESS USUALLY REQUIRED FOR COUPLED OR GEARED MACHINES.
7. SHAFT EXTENSIONS ARE ACCORDING TO DIN 748. TOLERANCES ARE BASED ON THE ISA FITTING SYSTEM USING K6 FOR DIAMETERS UP TO 50MM AND m6 FOR DIAMETERS ABOVE.
8. MAX SHAFT TIR .06 L0021
MAX FACE TIR .13 L0051
9. MOTOR WEIGHT 240 KG. (530 LBS) (MAY VARY 15%)
10. BRAKE: 460VAC 20 Nm MAX. HOLDING TORQUE. BRAKE RELEASES WHEN VOLTAGE APPLIED

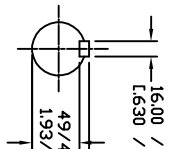
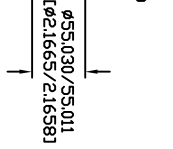
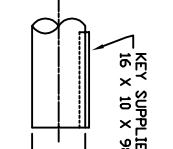
BLOWER CONNECTION	
LEAD	SERIES
11	L1
12	L2
13	L3
14	L3
15	L3
16	L3
17	L3
18	L3
19	L3

PIN-OUT ENCODER CONNECTOR	
PIN	FUNCTION
A	SIN +
B	SIN -
C	COS +
D	COS -
E	DATA +
F	DATA -
G-H	-
N	+9 VDC
P	COM
R	TS +
S	TS -
T-V	-

MOTOR CONNECTION	
LEAD	TERMINAL BOX
U1	L1
V1	L2
W1	L3
GREEN	GROUND

BRAKE CONNECTION	
LEAD	460 V1 PHASE SOURCE
B1	L1
B2	L2

DRIVE END SHAFT DETAIL SPEC (9)



NOTE: ALL DRAWING MODIFICATIONS REQUIRE CUSTOMER APPROVAL

REV	C/R	REVISION DESCRIPTION	DATE	BY

UNLESS OTHERWISE SPECIFIED
DO NOT SCALE DRAWING
DIMENSIONS ARE IN MILLIMETERS
WITH DIMENSIONS REFERENCED TO DIM UNLESS OTHERWISE SPECIFIED
THIRD ANGLE PROJECTION

DESIGNED BY	DATE	APPROVED BY	DATE
GWS	3/06/06	WEM	3/06/06

CATALOG NO. HPK-B1609E-SC44AA-ESM

DXF FILE AVAILABLE



PART NO. L16MS207
SCALE: 1/16
DWG SIZE C
SHEET 1 OF 1