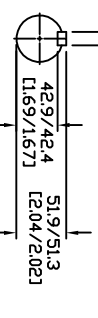
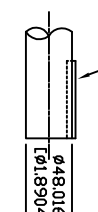


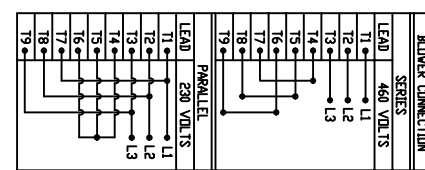
KEY SUPPLIED
14 X 9 X 80



DRIVE END
SHAFT DETAIL
SPEC (9)

SPECIFICATIONS:
1. MOTOR INFORMATION
MOTOR TYPE: VARIABLE SPEED AC
FRAME SIZE: RDL1310Y
RATING: 238 KW
VOLTAGE: 460
ENCLOSURE: TOTALLY ENCLOSED IP54
MOUNTING: FLANGE (350mm BOLT CIRCLE)
COOLING: BLOWER COOLED IC416
DRIVE METHOD: COUPLED OR BELTED
ACCESSORIES: ENCODER & BRAKE

2. CONTINUOUS STALL TORQUE: 155 Nm
MAX AT 155°C WINDING TEMPERATURE, IN A 40°C AMBIENT
3. OPERATING SPEED: 1500 BASE SPEED / 3000 RPM MAX.
4. 1024 SINUSOID/REV ENCODER, WITH MULTI-TURN ABSOLUTE POSITION DATA
5. FOR ADDITIONAL SPECIFICATIONS SEE L13M5191ESE
6. SHAFT HEIGHT WILL NOT BE EXCEEDED SHIMS UP TO 0.5 MM IN THICKNESS USUALLY REQUIRED FOR COUPLED OR GEARED MACHINES.
7. SHAFT EXTENSIONS ARE ACCORDING TO DIN 748. TOLERANCES ARE BASED ON THE ISA FITTING SYSTEM USING K6 FOR DIAMETERS UP TO 50MM AND m6 FOR DIAMETERS ABOVE.
8. MAX SHAFT TIR .06 L[0021]
MAX FACE TIR .13 L[0051]
9. MOTOR WEIGHT 218 KG (481 LBS) (MAY VARY 15%)
10. BRAKE RELEASES WHEN VOLTAGE APPLIED



LEAD	460 VOLTS	SERIES	PIN-OUT	ENCODER CONNECTOR	PIN	FUNCTION
11	L1		A	SIN +		
12	L2		B	SIN -		
13	L3		C	COS +		
14	L3		D	COS -		
15	L3		E	DATA +		
16	L3		F	DATA -		
17	L3		G-M	-		
18	L3		N	+9 VDC		
19	L3		P	COM		
		PARALLEL	R	TS +		
			S	TS -		
			T	-V		

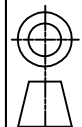
LEAD	460 VOLT	TERMINAL BOX	LEAD	460 VOLT	TERMINAL BOX
U	L1		U	L1	
V	L2		V	L2	
W	L3		W	L3	
X	L3		X	L3	
Y	L3		Y	L3	
Z	L3		Z	L3	
		GREEN GROUND			

LEAD	460 VOLT	TERMINAL BOX	LEAD	460 VOLT	TERMINAL BOX
B1	L1		B1	L1	
B2	L2		B2	L2	

NOTE: ALL DRAWING MODIFICATIONS REQUIRE CUSTOMER APPROVAL

REV	C/R	REVISION DESCRIPTION	DATE	BY
		UNLESS OTHERWISE SPECIFIED DO NOT SCALE DRAWING DIMENSIONS ARE IN MILLIMETERS WITH INCHES REFERENCED EXCEPT UNLESS OTHERWISE SPECIFIED THIRD ANGLE PROJECTION		
		DRAWN BY: GVS DATE: 3/03/06	APPROVED BY: WEM DATE: 3/03/06	
		CATALOG NO: HPK-B1310C-MB44AA-ESM		

DXF FILE AVAILABLE



PART NO: L13M5191
SCALE: 1/16
DWG SIZE: C
SHEET: 1 OF 1