

ROTATABLE IN 90° INCREMENTS
1/2" CONDUIT
ENCODER CONNECTOR

483 [19.01]
279 [11.001]
247 [9.731]
195 [7.691]
53 [2.091]
588 [23.131]
350 [13.781]
262 [10.311]
132 [5.191]
114 [4.481]
196 [7.721]
300 [11.811] R.C.
12L 471 [12.471]
17 [0.661]
5 [0.201]

1. MOTOR INFORMATION
MOTOR TYPE: VARIABLE SPEED AC
FRAME SIZE: RDL1307Y
RATING: 298 KW
VOLTAGE: 460
ENCLOSURE: TOTALLY ENCLOSED IP54
MOUNTING: FLANGE (350mm BOLT CIRCLE)
COOLING: BLOWER COOLED IC416
DRIVE METHOD: COUPLED OR BELTED
ACCESSORIES: ENCODER & BRAKE

2. CONTINUOUS STALL TORQUE: 96 Nm
MAX AT 155°C WINDING TEMPERATURE, IN A 40°C AMBIENT

3. OPERATING SPEED: 1500 BASE SPEED / 3000 RPM MAX.

4. 1024 SINUSOID/REV ENCODER, WITH SINGLE-TURN ABSOLUTE POSITION DATA

5. FOR ADDITIONAL SPECIFICATIONS SEE L13M5205E

6. SHAFT HEIGHT WILL NOT BE EXCEEDED SHIMS UP TO 0.5 MM IN THICKNESS USUALLY REQUIRED FOR COUPLED OR GEARED MACHINES.

7. SHAFT EXTENSIONS ARE ACCORDING TO DIN 748. TOLERANCES ARE BASED ON THE ISA FITTING SYSTEM USING K6 FOR DIAMETERS UP TO 50MM AND m6 FOR DIAMETERS ABOVE.

8. MAX SHAFT TIR .06 [0.021]
MAX FACE TIR .13 [0.051]

9. MOTOR WEIGHT 193 KG. [426 LBS] (MAY VARY 15%)

10. BRAKE: 460VAC 20 Nm MAX. HOLDING TORQUE, BRAKE RELEASES WHEN VOLTAGE APPLIED

KEY SUPPLIED
14 X 9 X 80
Ø48.016 / 48.003
Ø1.8904 / 1.88991

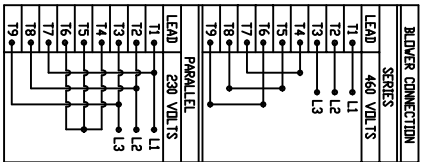
DRIVE END
SHAFT DETAIL
SPEC (9)

Ø250.00 +0.02/-0.01
[Ø9.843 +0.01/-0.01]
SPEC (10)

Ø18.5 [7.73]
+0.52 [+0.02]
-0.00 [-0.00]
SPEC (8)

1399/1394 [55.1/54.91]
4292/4242 [169.1/167.1]
51/51.05 [2.02/2.01]

1. MOTOR INFORMATION
2. CONTINUOUS STALL TORQUE: 96 Nm
3. OPERATING SPEED: 1500 BASE SPEED / 3000 RPM MAX.
4. 1024 SINUSOID/REV ENCODER, WITH SINGLE-TURN ABSOLUTE POSITION DATA
5. FOR ADDITIONAL SPECIFICATIONS SEE L13M5205E
6. SHAFT HEIGHT WILL NOT BE EXCEEDED SHIMS UP TO 0.5 MM IN THICKNESS USUALLY REQUIRED FOR COUPLED OR GEARED MACHINES.
7. SHAFT EXTENSIONS ARE ACCORDING TO DIN 748. TOLERANCES ARE BASED ON THE ISA FITTING SYSTEM USING K6 FOR DIAMETERS UP TO 50MM AND m6 FOR DIAMETERS ABOVE.
8. MAX SHAFT TIR .06 [0.021]
9. MOTOR WEIGHT 193 KG. [426 LBS] (MAY VARY 15%)
10. BRAKE RELEASES WHEN VOLTAGE APPLIED

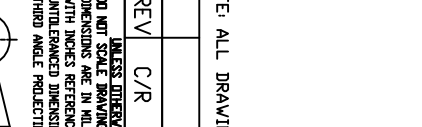


LEAD	460 VOLTS	SERIES	PIN-OUT	ENCODER CONNECTOR
11	L1		A	SIN +
12	L2		B	SIN -
13	L3		C	COS +
14	L3		D	COS -
15	L3		E	DATA +
16	L3		F	DATA -
17	L3		G-H	-
18	L3		N	+9 VDC
19	L3		P	COM
		PARALLEL	R	TS +
			S	TS -
			T	-V

LEAD	460 V PHASE	TERMINAL BOX	LEAD	460 V PHASE
U1	L1		U1	L1
V1	L2		V1	L2
L3	L3		L3	L3
		GREEN GROUND		

LEAD	460 V PHASE	TERMINAL BOX	LEAD	460 V PHASE
B1	L1		B1	L1
L2	L2		L2	L2

REV	C/R	REVISION DESCRIPTION	DATE	BY
		UNLESS OTHERWISE SPECIFIED DO NOT SCALE DRAWING DIMENSIONS ARE IN MILLIMETERS WITH UNDESIGNED DIMENSIONS EXCEPT UNDESIGNED DIMENSIONS ARE REFERRED TO THIRD ANGLE PROJECTION		
		DRAWN BY: 3/06/06	APPROVED BY: 3/06/06	
		CATALOG NO: HPK-B1307E-SC44AA-ESM		
		PART NO: L13M5205		



Allen-Bradley

SCALE: 1/4" = 1"

DWG SIZE: C

SHEET: 1 OF 1

DXF FILE AVAILABLE

NOTE: ALL DRAWING MODIFICATIONS REQUIRE CUSTOMER APPROVAL