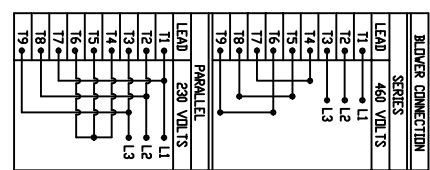


**SPECIFICATIONS:**

- MOTOR INFORMATION**  
MOTOR TYPE: VARIABLE SPEED AC  
FRAME SIZE: RDL1307Y  
RATING: 298 KW  
VOLTAGE: 460  
ENCLOSURE: TOTALLY ENCLOSED IP54  
MOUNTING: FLANGE (350mm BOLT CIRCLE)  
COOLING: BLOWER COOLED IC416  
DRIVE METHOD: COUPLED OR BELTED  
ACCESSORIES: ENCODER & BRAKE
- CONTINUOUS STALL TORQUE: 96 Nm  
MAX AT 155°C WINDING TEMPERATURE, IN A 40°C AMBIENT
- OPERATING SPEED: 1500 BASE SPEED / 3000 RPM MAX.
- 1024 SINUSOID/REV ENCODER, WITH MULTI-TURN ABSOLUTE POSITION DATA
- FOR ADDITIONAL SPECIFICATIONS SEE L13M5195ESE
- SHAFT HEIGHT WILL NOT BE EXCEEDED SHIMS UP TO 0.5 MM IN THICKNESS USUALLY REQUIRED FOR COUPLED OR GEARED MACHINES.
- SHAFT EXTENSIONS ARE ACCORDING TO DIN 748. TOLERANCES ARE BASED ON THE ISA FITTING SYSTEM USING K6 FOR DIAMETERS UP TO 50MM AND n6 FOR DIAMETERS ABOVE.
- MAX SHAFT TIR .06 [0.002]
- MAX FACE TIR .13 [0.005]
- MOTOR WEIGHT 193 KG. [426 LBS] (MAY VARY 15%)
- BRAKE RELEASES WHEN VOLTAGE APPLIED



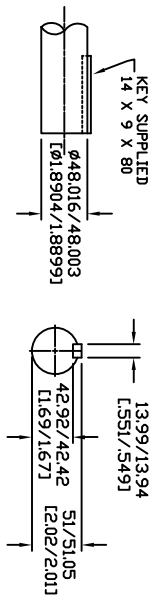
LEAD	460 VOLTS	230 VOLTS
L1	L1	L1
L2	L2	L2
L3	L3	L3
L4	L4	L4
L5	L5	L5
L6	L6	L6
L7	L7	L7
L8	L8	L8
L9	L9	L9

LEAD	460 VOLT PHASE	230 VOLT PHASE
L1	U1	U1
L2	V1	V1
L3	W1	W1
L4	U2	U2
L5	V2	V2
L6	W2	W2
L7	U3	U3
L8	V3	V3
L9	W3	W3

LEAD	460 VOLT PHASE	230 VOLT PHASE
L1	U1	U1
L2	V1	V1
L3	W1	W1
L4	U2	U2
L5	V2	V2
L6	W2	W2
L7	U3	U3
L8	V3	V3
L9	W3	W3

LEAD	460 VOLT PHASE	230 VOLT PHASE
L1	U1	U1
L2	V1	V1
L3	W1	W1
L4	U2	U2
L5	V2	V2
L6	W2	W2
L7	U3	U3
L8	V3	V3
L9	W3	W3

DRIVE END  
SHAFT DETAIL  
SPEC (9)



DXF FILE AVAILABLE

NOTE: ALL DRAWING MODIFICATIONS REQUIRE CUSTOMER APPROVAL

REV	C/R	REVISION DESCRIPTION	DATE	BY

UNLESS OTHERWISE SPECIFIED	UNLESS OTHERWISE SPECIFIED
DO NOT SCALE DRAWING	DO NOT SCALE DRAWING
DIMENSIONS ARE IN MILLIMETERS	DIMENSIONS ARE IN MILLIMETERS
WITH INCHES REFERENCED EXCEPT	WITH INCHES REFERENCED EXCEPT
UNLESS OTHERWISE SPECIFIED	UNLESS OTHERWISE SPECIFIED
THIRD ANGLE PROJECTION	THIRD ANGLE PROJECTION

ALLEN-BRADLEY	ALLEN-BRADLEY
SCALE: 1/4" = 1"	SCALE: 1/4" = 1"
DWG. NO. L13M5195	DWG. NO. L13M5195
CATALOG NO. HPK-B1307E-MB44AA-ESM	CATALOG NO. HPK-B1307E-MB44AA-ESM
DATE: 3/03/06	DATE: 3/03/06
APPROVED BY: WEM	APPROVED BY: WEM
DRAWN BY: CWS	DRAWN BY: CWS