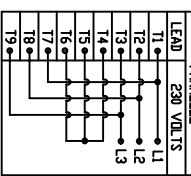


SPECIFICATIONS:

- MOTOR INFORMATION
MOTOR TYPE: VARIABLE SPEED AC
FRAME SIZE: RDL1307Y
RATING: 17.1 kW
VOLTAGE: 460
ENCLOSURE: TOTALLY ENCLOSED IP54
MOUNTING: FLANGE (350mm BOLT CIRCLE)
COOLING: BLOWER COOLED IC416
DRIVE METHOD: COUPLED OR BELTED ACCESSORIES: ENCODER & BRAKE
- CONTINUOUS STALL TORQUE: 112 Nm
MAX AT 155°C WINDING TEMPERATURE, IN A 40°C AMBIENT
- OPERATING SPEED: 1500 BASE SPEED / 3000 RPM MAX.
- 1024 SINUSOID/REV ENCODER, WITH MULTI-TURN ABSOLUTE POSITION DATA
- FOR ADDITIONAL SPECIFICATIONS SEE 10000000234
- SHAFT HEIGHT WILL NOT BE EXCEEDED SHIMS UP TO 0.5 MM IN THICKNESS USUALLY REQUIRED FOR COUPLED OR GEARED MACHINES.
- SHAFT EXTENSIONS ARE ACCORDING TO DIN 748, TOLERANCES ARE BASED ON THE ISA FITTING SYSTEM USING K6 FOR DIAMETERS UP TO 50MM AND m6 FOR DIAMETERS ABOVE.
- MAX SHAFT TIR .06 [0.002]
MAX FACE TIR .13 [0.005]
- MOTOR WEIGHT 193 KG. [426 LBS] (MAY VARY 15%)
- BRAKE RELEASES WHEN VOLTAGE APPLIED

LEAD	460 VOLTS
11	L1
12	L2
13	L3
14	L3
15	L3
16	L3
17	L3
18	L3
19	L3

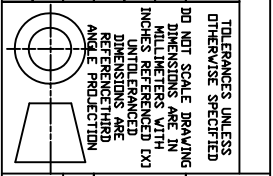


PIN-OUT	ENCODER CONNECTOR
A	SIN +
B	SIN -
C	COS +
D	COS -
E	DATA +
F	DATA -
G-H	-
N	+9 VDC
P	COM
R	TS +
S	TS -
T-V	-

LEAD	460 V 1 PHASE
11	L1
12	L2
13	L3
14	L3
15	L3
16	L3
17	L3
18	L3
19	L3

LEAD	230 VOLTS
11	L1
12	L2
13	L3
14	L3
15	L3
16	L3
17	L3
18	L3
19	L3

VERSION/CHANGE NUMBER	REFERENCES



TOLERANCES UNLESS OTHERWISE SPECIFIED
 DID NOT SCALE DRAWING DIMENSIONS ARE IN MILLIMETERS WITH INCHES REFERENCED UNTIL ENDED
 DIMENSIONS ARE ANGLES PROJECTION

DR.	GWS	DATE	SHEET	DF
		08-15-06	1	1

Rockwell Automation
 HPK-B1307C-MB44AA,ESM
 CAD DOCUMENT
 Allen-Bradley
 DXF FILE AVAILABLE
 DWG DOCUMENT NUMBER: 10000000252

NOTE: ALL DRAWING MODIFICATIONS REQUIRE CUSTOMER APPROVAL
 SUPPLIER PART NUMBER: L13MS233
 DRIVE END SHAFT DETAIL SPEC (9)

