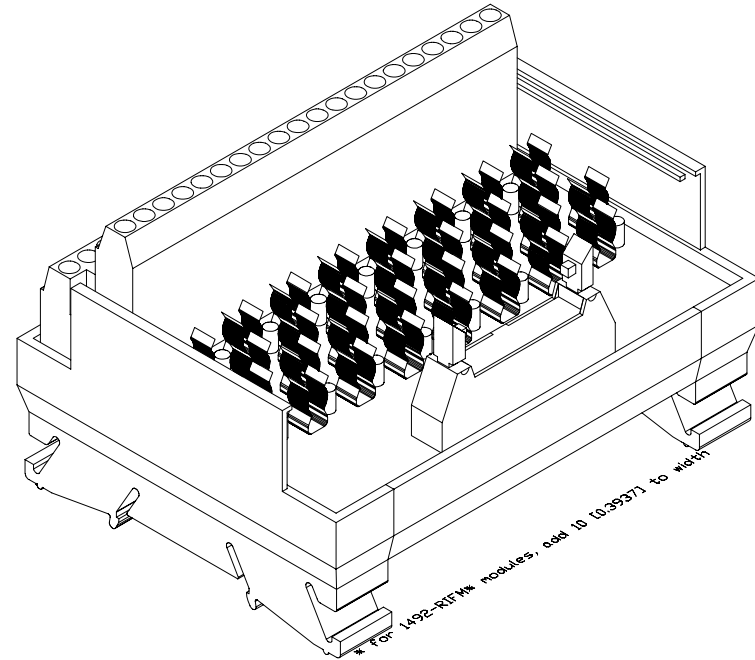
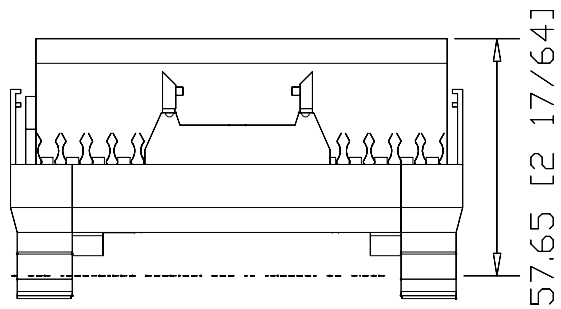


* For 1492-RIFM* modules, add 10 [0.3937] to width

1492-IFM20F-F*-2
 20-POINT FUSIBLE DIGITAL IFM
 w/ BLOWN FUSE INDICATORS, EXTRA
 TERMINALS FOR OUTPUTS



* For 1492-RIFM* modules, add 10 [0.3937] to width