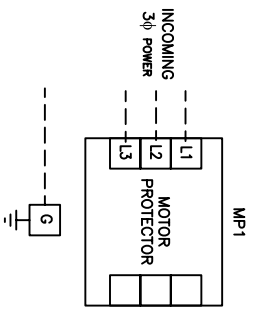
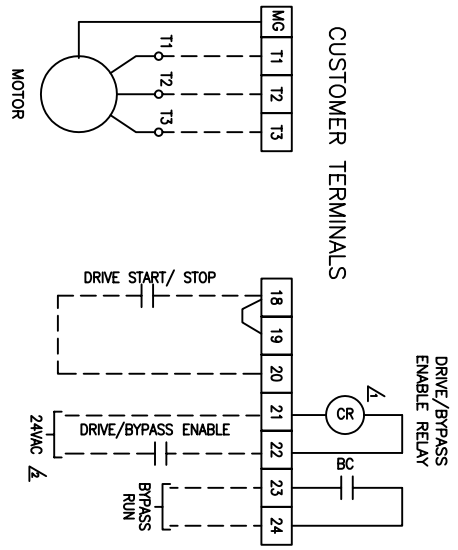


- 1. IF THE "DRIVE/BYPASS ENABLE" RELAY/CRUIS USED FROM "CR" RELAY.
- 2. DRIVE/BYPASS INPUT MAY ALSO BE USED FOR FREEZE/FIRE STATUS INPUTS.
- 3. WHEN IN "AUTO MODE" 0-10VDC SPEED REFERENCE WILL COME FROM ANALOG IN 1 TERMINALS 14-15. SPEED SOURCE IS TO BE USED. WIRE TO ANALOG IN 1 TERMINALS 16-17 AND CHANGE BIT 0 OF PARAMETER 320 ("ANALOG IN CONFIG") TO 0 (CURRENT). ADJUST SLOPING PARAMETERS 322 AND 323 AS REQUIRED.

--- CONNECTIONS SUPPLIED BY CUSTOMER



REV.	DATE	BY	ECN/CR. NO.
A	12/8/04	JRF	
B	1/28/05	JRF	
C	11/1/07	AVR	

DR. BY	JRF/ACI	CHK. BY	JFH/ACI	ENG.	DATE
DATE	5/10/04	DATE	5/10/04	DATE	

DRG. NO.	97D00813-	NEXT SH.	1	SH. NO.	1
DATE	5/10/04				

Rockwell Automation

THIS DRAWING IS THE PROPERTY OF ROCKWELL AUTOMATION, INC. OR ITS SUBSIDIARIES AND MAY NOT BE COPIED, USED OR DISCLOSED FOR ANY PURPOSE EXCEPT AS AUTHORIZED IN WRITING BY ROCKWELL AUTOMATION, INC.

TITLE: DRIVE-CONNECT DRAWING - PF70, STYLE C
 1-50HP @ 460VAC