

PARAMETER (1)	DESCRIPTION	STANDARD DEFAULT	AS SHIPPED SETTING	AS SHIPPED SETTING	AS SHIPPED SETTING	AS SHIPPED SETTING
001	OUTPUT FREQ	SETTING	READ ONLY	READ ONLY	READ ONLY	READ ONLY
002	COMMAND FREQ	READ ONLY	READ ONLY	READ ONLY	READ ONLY	READ ONLY
003	OUTPUT CURRENT	READ ONLY	READ ONLY	READ ONLY	READ ONLY	READ ONLY
004 (3)	TORQUE CURRENT	READ ONLY	READ ONLY	READ ONLY	READ ONLY	READ ONLY
012	DC BUS VOLTAGE	READ ONLY	READ ONLY	READ ONLY	READ ONLY	READ ONLY
041	MOTOR NP VOLTS	DRIVE RATING BASED	DEFAULT	DEFAULT	DEFAULT	DEFAULT
042	MOTOR NP EL	DRIVE RATING BASED	DEFAULT	DEFAULT	DEFAULT	DEFAULT
043	MOTOR NP HERTZ	BASED ON DRIVE CAP	DEFAULT	DEFAULT	DEFAULT	DEFAULT
044	MOTOR NP RPM	BASED 1750 RPM	DEFAULT	DEFAULT	DEFAULT	DEFAULT
045	MOTOR NP POWER	DRIVE RATING BASED	DEFAULT	DEFAULT	DEFAULT	DEFAULT
046	MTR NP PWR UNITS	DRIVE RATING BASED	DEFAULT	DEFAULT	DEFAULT	DEFAULT
047	MOTOR OL HERTZ	MOTOR NP HERTZ/3	DEFAULT	DEFAULT	DEFAULT	DEFAULT
049 (3)	MOTOR POLES	0 "SENSRLS VECT"	DEFAULT	DEFAULT	DEFAULT	DEFAULT
053	MOTOR CNTRL SEL	0 "SENSRLS VECT"	3 "FAN/PUMP V/HZ"	3 "FAN/PUMP V/HZ"	3 "FAN/PUMP V/HZ"	3 "FAN/PUMP V/HZ"
054	MAXIMUM VOLTAGE	DRIVE RATED VOLTS	DEFAULT	DEFAULT	DEFAULT	DEFAULT
055	MAXIMUM FREQ	130 HZ	DEFAULT	DEFAULT	DEFAULT	DEFAULT
061	AUTO TUNE	3 "CALCULATE"	DEFAULT	DEFAULT	DEFAULT	DEFAULT
080 (3)	FEEDBACK SELECT	0 "OPEN LOOP"	DEFAULT	DEFAULT	DEFAULT	DEFAULT
081	MINIMUM SPEED	0.0 HZ	DEFAULT	DEFAULT	DEFAULT	DEFAULT
082	MAXIMUM SPEED	60.0 HZ	DEFAULT	DEFAULT	DEFAULT	DEFAULT
091	SPEED REF A HI	[MAXIMUM SPEED]	1 "ANALOG IN 1"	1 "ANALOG IN 1"	1 "ANALOG IN 1"	1 "ANALOG IN 1"
092	SPEED REF A LO	0.0 HZ	DEFAULT	DEFAULT	DEFAULT	DEFAULT
093	SPEED REF B SEL	11 "Preset Snd 1"	18 "DPA Port 1"	18 "DPA Port 1"	18 "DPA Port 1"	18 "DPA Port 1"
094	SPEED REF B HI	[MAXIMUM SPEED]	DEFAULT	DEFAULT	DEFAULT	DEFAULT
095	SPEED REF B LO	0.0 HZ	DEFAULT	DEFAULT	DEFAULT	DEFAULT
096	TB MAN REF SEL	1 "ANALOG IN 1"	DEFAULT	DEFAULT	DEFAULT	DEFAULT
097	TB MAN REF HI	[MAXIMUM SPEED]	DEFAULT	DEFAULT	DEFAULT	DEFAULT
098	TB MAN REF LO	0.0 HZ	DEFAULT	DEFAULT	DEFAULT	DEFAULT
100	JOG SPEED 1	10.0 HZ	DEFAULT	DEFAULT	DEFAULT	DEFAULT
101	PRESSET SPEED 1	5.0 HZ	DEFAULT	DEFAULT	DEFAULT	DEFAULT
102	PRESSET SPEED 2	10.0 HZ	5.0 HZ	5.0 HZ	5.0 HZ	5.0 HZ
103	PRESSET SPEED 3	20.0 HZ	DEFAULT	DEFAULT	DEFAULT	DEFAULT
104	PRESSET SPEED 4	30.0 HZ	DEFAULT	DEFAULT	DEFAULT	DEFAULT
105	PRESSET SPEED 5	40.0 HZ	DEFAULT	DEFAULT	DEFAULT	DEFAULT
106	PRESSET SPEED 6	50.0 HZ	DEFAULT	DEFAULT	DEFAULT	DEFAULT
107	PRESSET SPEED 7	60.0 HZ	DEFAULT	DEFAULT	DEFAULT	DEFAULT
108	JOG SPEED 2	10.0 HZ	DEFAULT	DEFAULT	DEFAULT	DEFAULT
140	ACCEL TIME 1	10.0 SECS	20.0 SECS	20.0 SECS	20.0 SECS	20.0 SECS
141	ACCEL TIME 2	10.0 SECS	20.0 SECS	20.0 SECS	20.0 SECS	20.0 SECS
142	DECEL TIME 1	10.0 SECS	20.0 SECS	20.0 SECS	20.0 SECS	20.0 SECS
143	DECEL TIME 2	10.0 SECS	20.0 SECS	20.0 SECS	20.0 SECS	20.0 SECS
146	S CURVE %	0.0%	20.0%	20.0%	20.0%	20.0%
147	CURRENT LMT SEL	0 "CUR LIM VAL"	DEFAULT	DEFAULT	DEFAULT	DEFAULT
148	CURRENT LMT VAL	[RATED AMPS] X 1.3	DEFAULT	DEFAULT	DEFAULT	DEFAULT
155	STOP MODE A	1 "RAMP"	0 "COAST"	0 "COAST"	0 "COAST"	0 "COAST"
156	STOP MODE B	0 "COAST"	DEFAULT	DEFAULT	DEFAULT	DEFAULT
157	DC BRAKE LVL SEL	0 "DC BRAKE LVL"	DEFAULT	DEFAULT	DEFAULT	DEFAULT
158	DC BRAKE LEVEL	[RATED AMPS]	DEFAULT	DEFAULT	DEFAULT	DEFAULT
159	DC BRAKE TIME	0.0 SECS	DEFAULT	DEFAULT	DEFAULT	DEFAULT
29	BUS REG MODE A		DEFAULT	DEFAULT	DEFAULT	DEFAULT
29	BUS REG MODE B		DEFAULT	DEFAULT	DEFAULT	DEFAULT
29	DB RESISTOR TYPE	2 "NONE"	DEFAULT	DEFAULT	DEFAULT	DEFAULT
29	START AT POWERUP	0 "DISABLED"	1 "ENABLED"	1 "ENABLED"	1 "ENABLED"	1 "ENABLED"
29	FLYING START EN	0 "DISABLED"	1 "ENABLED"	1 "ENABLED"	1 "ENABLED"	1 "ENABLED"
29	AUTO RSTRT TRIES	0	DEFAULT	DEFAULT	DEFAULT	DEFAULT
29	POWER LOSS MODE	1.0 SECS	DEFAULT	DEFAULT	DEFAULT	DEFAULT
29	POWER LOSS TIME	0 "COAST"	DEFAULT	DEFAULT	DEFAULT	DEFAULT
29	DIRECTION MODE	0.5 SECS	DEFAULT	DEFAULT	DEFAULT	DEFAULT
29	PAPAM ACCESS LVL	0 "UNIPOLAR"	2 "REVERSE DIS"	2 "REVERSE DIS"	2 "REVERSE DIS"	2 "REVERSE DIS"
29	_DEFAULTS	0 "BASIC"	DEFAULT	DEFAULT	DEFAULT	DEFAULT
29	0 "READ"	DEFAULT	DEFAULT	DEFAULT	DEFAULT	DEFAULT
29	0 "READ"	DEFAULT	DEFAULT	DEFAULT	DEFAULT	DEFAULT
29	0 "READ"	DEFAULT	DEFAULT	DEFAULT	DEFAULT	DEFAULT

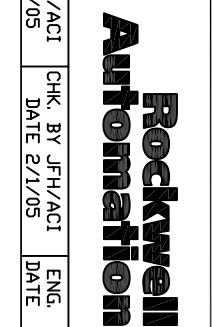
PARAMETER (1)	DESCRIPTION	STANDARD DEFAULT	AS SHIPPED SETTING	AS SHIPPED SETTING	AS SHIPPED SETTING	AS SHIPPED SETTING
214 (3)	START INHIBITS	SETTING	READ ONLY	READ ONLY	READ ONLY	READ ONLY
216 (3)	DIG IN STATUS	READ ONLY	READ ONLY	READ ONLY	READ ONLY	READ ONLY
217 (3)	DIG OUT STATUS	READ ONLY	READ ONLY	READ ONLY	READ ONLY	READ ONLY
238	FAULT CONFG 1	XXXXXXXXXX01011110	DEFAULT	DEFAULT	DEFAULT	DEFAULT
239 (3)	ALARM CONFG 1	XXXXXXXX1111111111	DEFAULT	DEFAULT	DEFAULT	DEFAULT
320	ANLG IN CONFG	XXXXXXXXXXXXXXXXX00	DEFAULT	DEFAULT	DEFAULT	DEFAULT
322	ANALOG IN 1 HI	10.000 VOLT	DEFAULT	DEFAULT	DEFAULT	DEFAULT
323	ANALOG IN 1 LO	0.000 VOLT	DEFAULT	DEFAULT	DEFAULT	DEFAULT
325	ANALOG IN 2 HI	10.000 VOLT	DEFAULT	DEFAULT	DEFAULT	DEFAULT
326	ANALOG IN 2 LO	0.000 VOLT	DEFAULT	DEFAULT	DEFAULT	DEFAULT
342	ANALOG OUT SEL	0 "OUTPUT FREQ"	DEFAULT	DEFAULT	DEFAULT	DEFAULT
343	ANALOG OUT 1 HI	10.00 VOLT	DEFAULT	DEFAULT	DEFAULT	DEFAULT
344	ANALOG OUT 1 LO	0.00 VOLT	DEFAULT	DEFAULT	DEFAULT	DEFAULT
361	DIGITAL IN1 SEL	4 "DIP"	DEFAULT	DEFAULT	DEFAULT	DEFAULT
362	DIGITAL IN2 SEL	3 "START"	DEFAULT	DEFAULT	DEFAULT	DEFAULT
363	DIGITAL IN3 SEL	18 "AUTO/MANUAL"	3 "AUX FAULT"	3 "AUX FAULT"	3 "AUX FAULT"	3 "AUX FAULT"
364	DIGITAL IN4 SEL	18 "SPEED SEL 1"	1 "ENABLE"	1 "ENABLE"	1 "ENABLE"	1 "ENABLE"
366	DIGITAL IN5 SEL	18 "SPEED SEL 2"	15 "SPEED SEL 1"	15 "SPEED SEL 1"	15 "SPEED SEL 1"	15 "SPEED SEL 1"
368	DIGITAL IN6 SEL	17 "SPEED SEL 3"	16 "SPEED SEL 2"	16 "SPEED SEL 2"	16 "SPEED SEL 2"	16 "SPEED SEL 2"
380	DIGITAL OUT1 SEL	1 "FAULT"	DEFAULT	DEFAULT	DEFAULT	DEFAULT
384	DIGITAL OUT2 SEL	4 "RUN"	DEFAULT	DEFAULT	DEFAULT	DEFAULT
385	DIG OUT2 LEVEL	0.0	DEFAULT	DEFAULT	DEFAULT	DEFAULT

NOTES: (1) PARAMETERS LISTED ARE PART OF BASIC PARAMETER GROUP. CONSULT DRIVE USER MANUAL FOR ADDITIONAL PARAMETERS.
(2) PARAMETERS PART OF ADVANCED PARAMETER GROUP.
(3) PARAMETER PART OF P-70 BASIC PARAMETER GROUP AND P-700 ADVANCED PARAMETER GROUP.

DATE	BY	APPROVAL
		DESIGN REVIEW
		FDR MANUFACTURING
		AS SHIPPED
		AS COMMISSIONED

REV.	DATE	BY	ECN/CR. NO.
A	4/11/05	JRF	

DR. BY JRF/ACI
DATE 2/1/05



THIS DRAWING IS THE PROPERTY OF ROCKWELL AUTOMATION, INC.
OR ITS SUBSIDIARIES AND MAY NOT BE COPIED, USED OR DISCLOSED FOR ANY
PURPOSE EXCEPT AS AUTHORIZED IN WRITING BY ROCKWELL AUTOMATION, INC.
TITLE
PARAMETER LISTING - P70/700 DRIVES
DWG. NO. 95D01249 -
NEXT SH. 1
SH. IND. 1