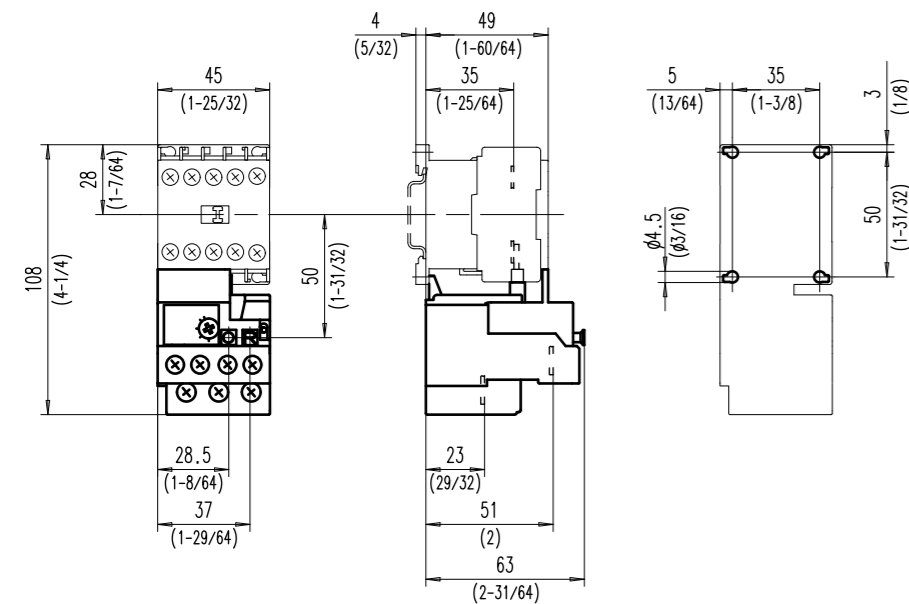
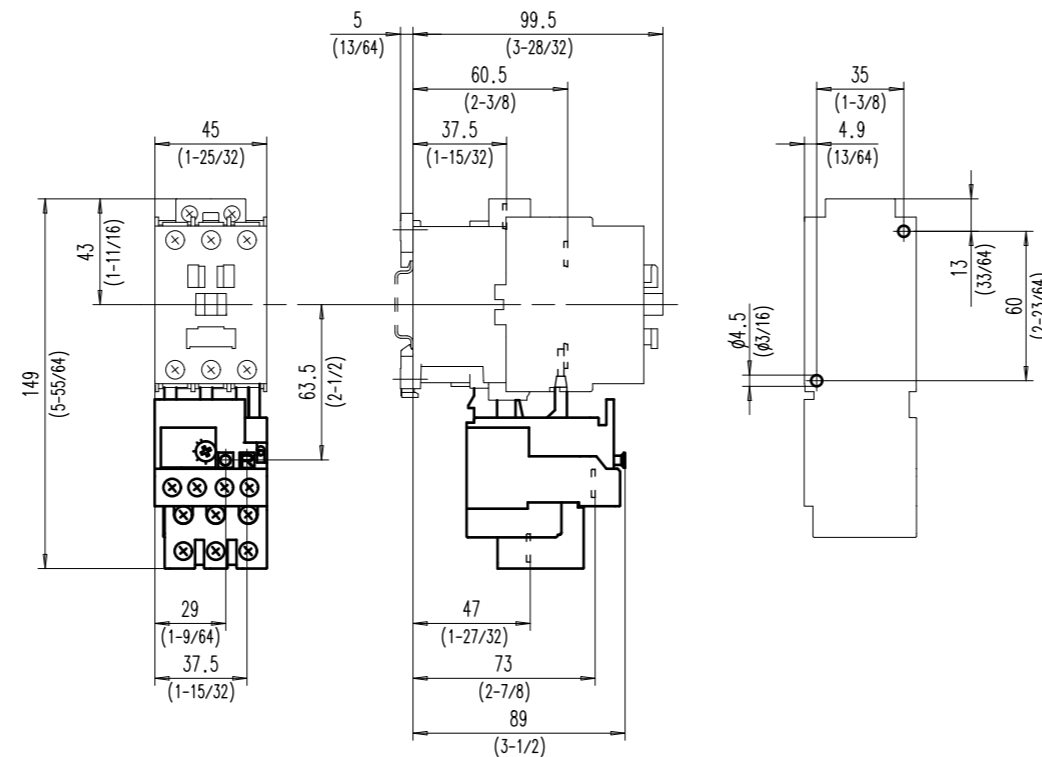


Overload Relays

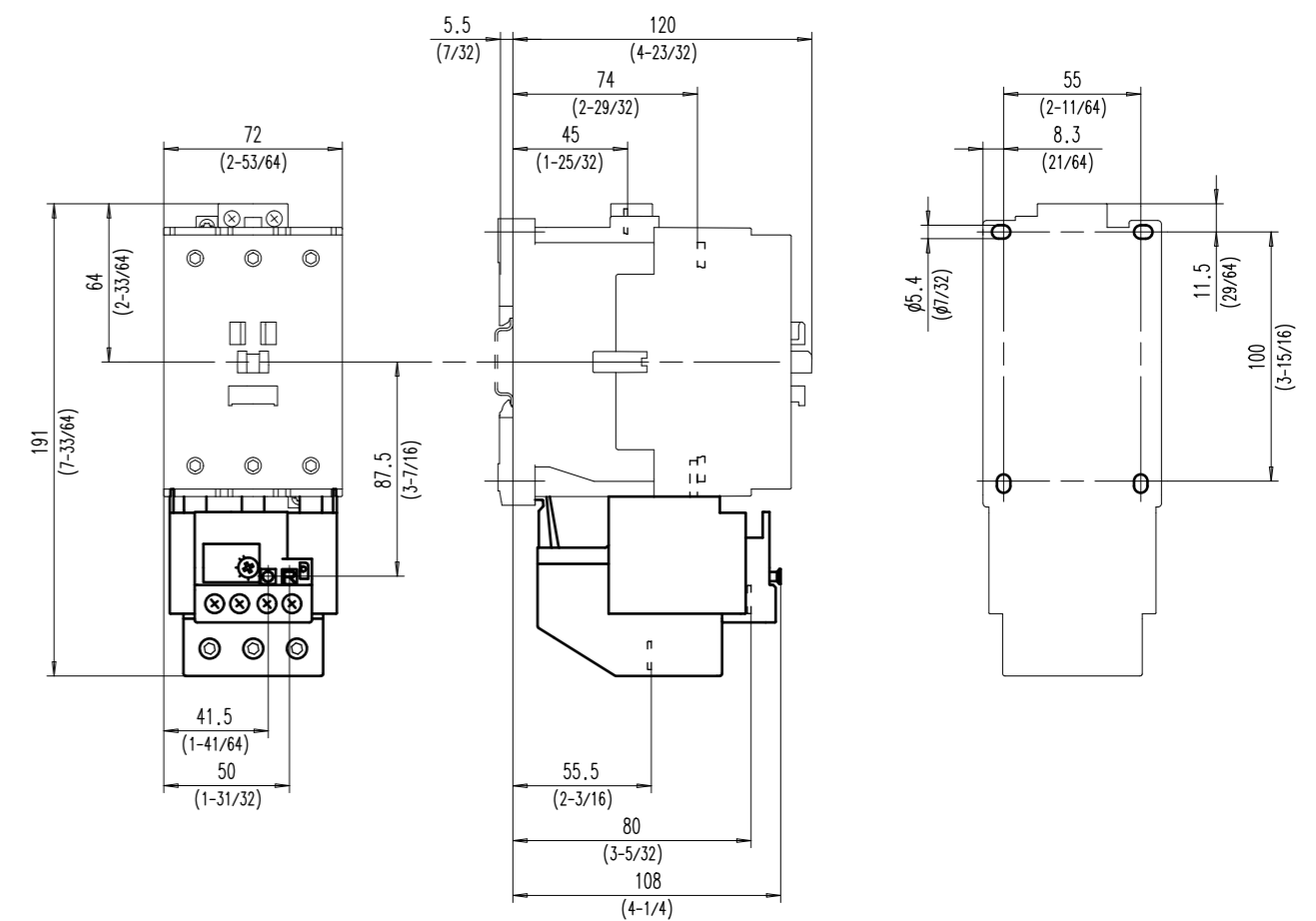
193-K...
(for use only with 100-K...)



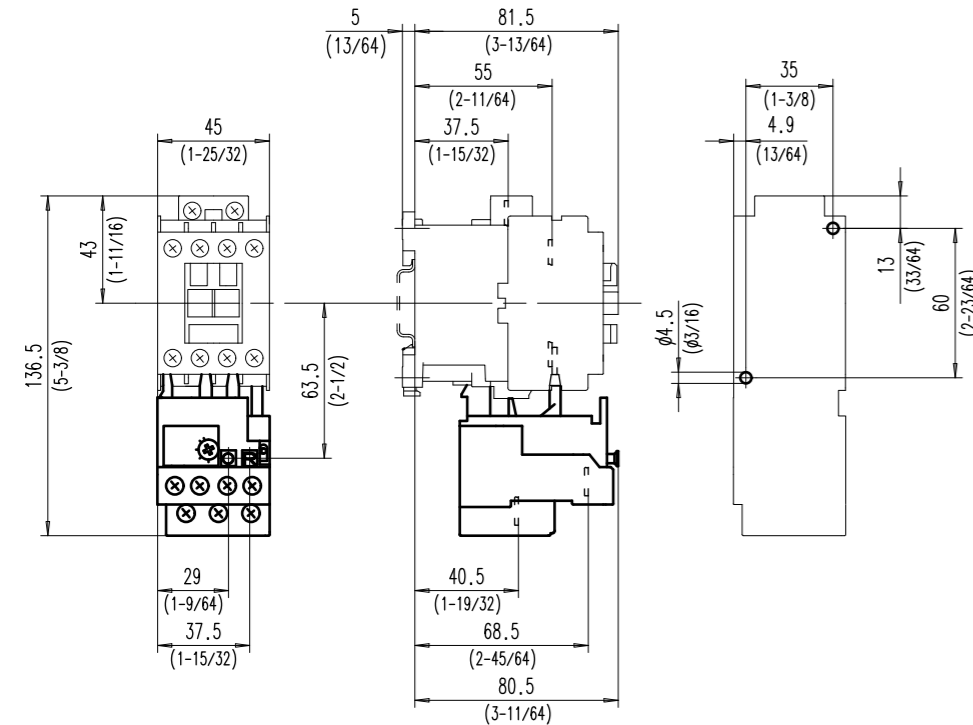
193-T1BC30...C38
(for use only with 100-C30...C37)



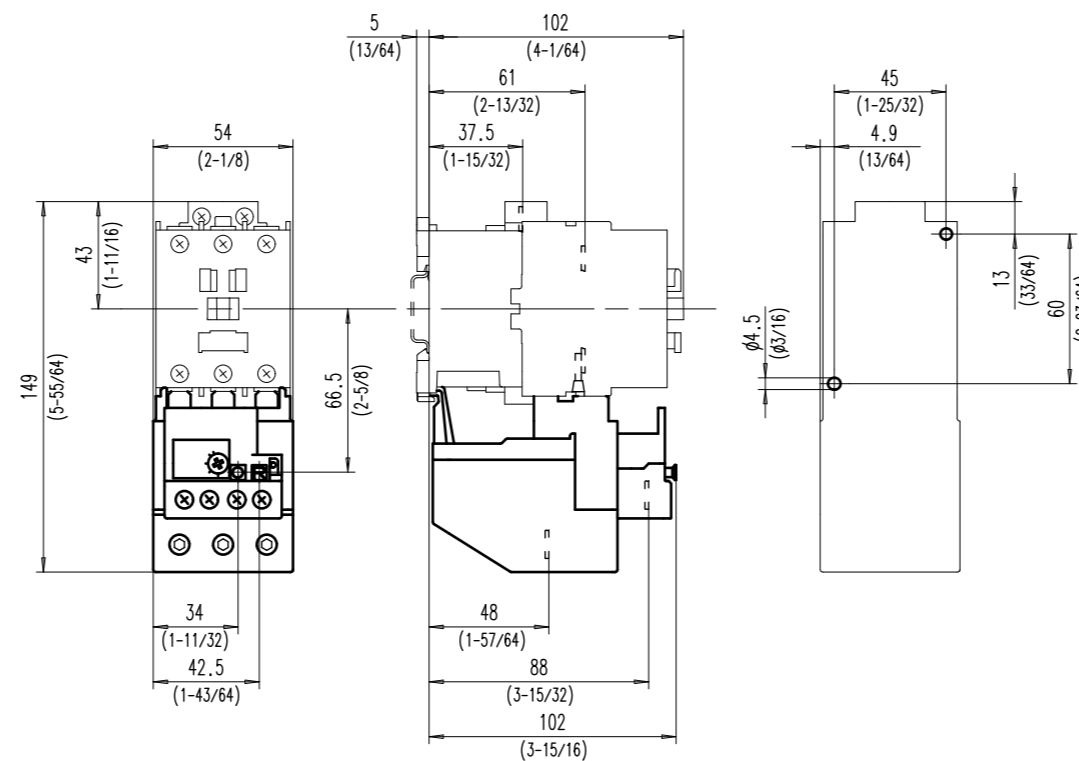
193-T1D47...C90
(for use only with 100-C60...C85)



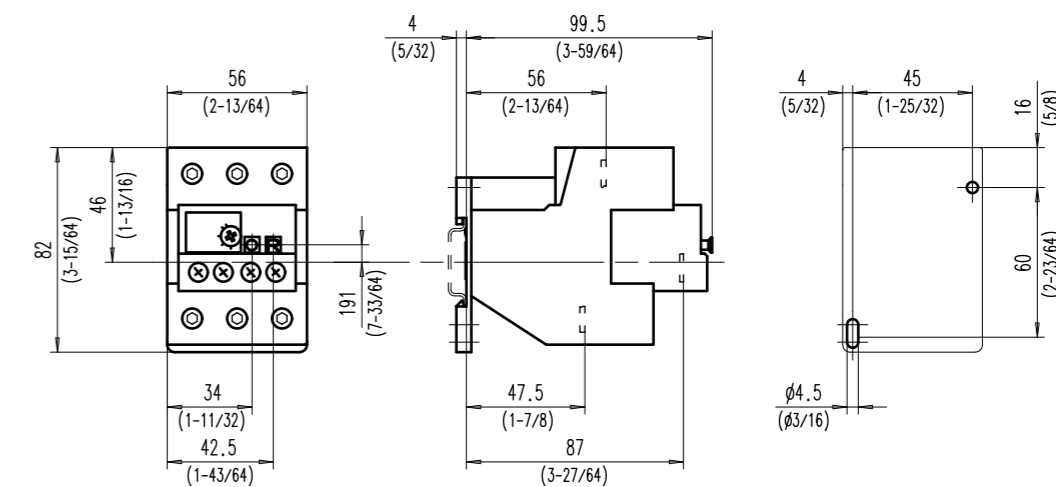
193-T1AA16...C25
(for use only with 100-C09...C23)



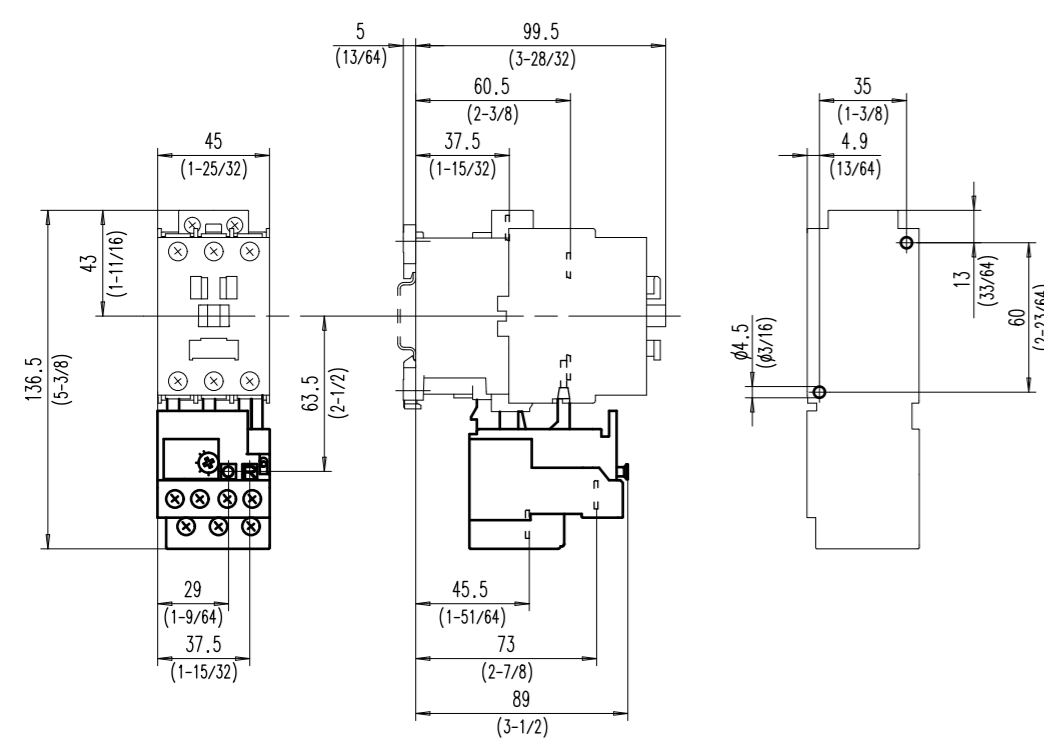
193-T1CC25...C47
(for use only with 100-C43)



193-T1DC47P...C90P
(separate mounting Overload Relays)



193-T1BC20...C25
(for use only with 100-C30...C37)



Dimensions in mm (inch)
Masse in mm (inch)

193-K.../193-T1...
Dimensions 193-K, 193-T1
Overload Relays

MASSSTAB ESCHL. SCALE	DES./DESS./DRWIN	DEPR./VERF./CHECK.	GES./AU/SEEN
1:3	Det. 18.04.08	18.06.08	Feller
AUSGABE EDITION	Nr. 3	Det. 20.10.08 via S.Peter	4 20.02.09 S.Peter

Proj: Tech. Unterlagen
Lib: 22_004

Rockwell Automation
Aarau Switzerland

22.004.591
A 2 SEITE/PAGE SEITEN/PAGES

Alle Rechte vorbehalten.
Tous droits reserves.
All rights reserved.

Nur mit der Nummer der Bestellbestaetigung ver-
sehene Zeichnungen sind fuer die Ausfuehrung verbindlich.
Seul les dessins portant le numero de la confirmation
de commande nous engagent pour l'execution.
Only drawings bearing the number of the acknow-
ledgment of order are binding for the execution.

Projektion:



CAD - Zeichnung
(darf nicht von Hand geaendert werden !)

22.004.591