

# Industrial Uninterruptible Power Supplies (UPS)

## Bulletin 1609

Clean, dependable power is essential to smooth-running factories – however, many factories are not afforded this luxury. The 1609 family of Industrial DIN Rail-Mounted Uninterruptible Power Supplies (UPS) are intended to help bridge this gap for its customers.

Various applications within a factory require battery back-up. Battery back-up helps to prevent a sudden loss of power that could result in lost data, damaged equipment, and/or extended down time.

## Reliable and Safe

The 1609 is uniquely designed for the industrial market to provide back-up AC power to the control cabinet. The 1609 will provide back-up power to bridge dips, sags, or brief losses of power. If necessary, the 1609 will facilitate a safe shut-down of your industrial PC, PLC, data logging HMI, or any other critical device in the control scheme. Without a 1609 in place, the customer is faced with nuisance power dips, extended down-time, and potential machine damage; all of which can result in significant and costly challenges.



## Features

### Rugged, Industrial Design

The 1609 can be mounted to a DIN rail or to the back of the panel.

### Elevated Temperature Performance

A high temperature battery option allows operation up to 50°C.

### Comprehensive Network Management

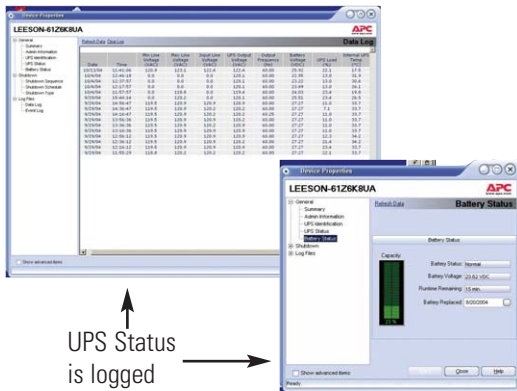
The optional Network Management Card (NMC) is monitored via RSVIEW™ or via the on-board web browser, and provides alarms that indicate the status of the UPS.

### “Dry contact” I/O

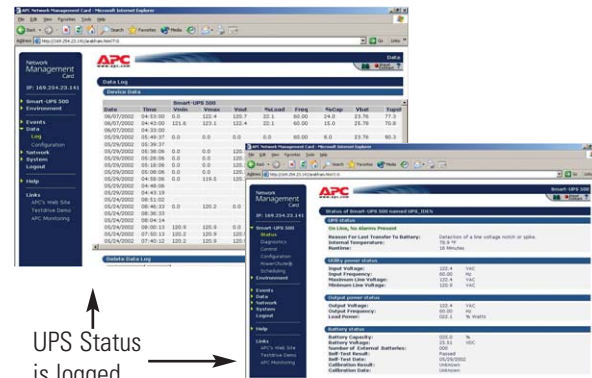
The 1609 has standard relay outputs to signal “Battery On.” The optional NMC allows additional UPS data to be communicated.

# Remote Monitoring and Remote Configuration

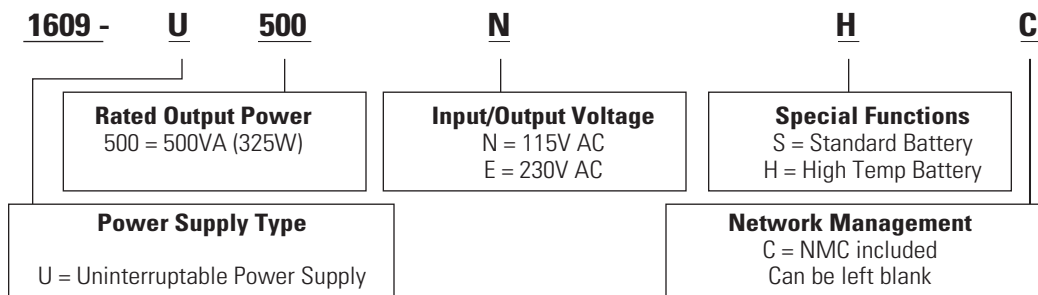
## Monitor via Serial Cable / PowerChute™



## Monitor via Ethernet Web Browser/RSView™ (Requires NMC)



The optional networking capabilities of the 1609 UPS allow the end user to remotely configure and monitor the status of individual or multiple UPS devices.



Characteristic	115V Model	230V Model
Input voltage (default) (Widen selectable range transfer points)	81V AC...143V AC 75V AC...153V AC	160V AC...287V AC 150V AC...300V AC
Nominal Current	4.12 A	2.2 A
Output voltage (default) (Widen selectable range transfer points)	106V AC...127V AC 97V AC...136V AC	208V AC...253V AC 196V AC...265V AC
Overload Protection	Alarm/Shutdown 107%	Alarm/Shutdown 107%
Battery Run Time	Full Load: 9 Minutes	Full Load: 9 Minutes
Charge Time	< 3hrs to 90% capacity	< 3hrs to 90% capacity
Operating Temperature: Standard Battery High Temp Battery	0...40°C 0...50°C	0...40°C 0...50°C
Dimensions/Weight (HxWxD)	6 x 14.25 x 6" 26 lbs	

[www.rockwellautomation.com](http://www.rockwellautomation.com)

### Corporate Headquarters

Rockwell Automation, 777 East Wisconsin Avenue, Suite 1400, Milwaukee, WI, 53202-5302 USA, Tel: (1) 414.212.5200, Fax: (1) 414.212.5201

### Headquarters for Allen-Bradley Products, Rockwell Software Products and Global Manufacturing Solutions

Americas: Rockwell Automation, 1201 South Second Street, Milwaukee, WI 53204-2496 USA, Tel: (1) 414.382.2000, Fax: (1) 414.382.4444

Europe: Rockwell Automation SA/NV, Vorstlaan/Boulevard du Souverain 36-BP 3A/B, 1170 Brussels, Belgium, Tel: (32) 2 663 0600, Fax: (32) 2 663 0640

Asia Pacific: Rockwell Automation, 27/F Citicorp Centre, 18 Whitfield Road, Causeway Bay, Hong Kong, Tel: (852) 2887 4788, Fax: (852) 2508 1846

### Headquarters for Dodge and Reliance Electric Products

Americas: Rockwell Automation, 6040 Ponders Court, Greenville, SC 29615-4617 USA, Tel: (1) 864.297.4800, Fax: (1) 864.281.2433

Europe: Rockwell Automation, Brühlstraße 22, D-74834 Elztal-Dallau, Germany, Tel: (49) 6261 9410, Fax: (49) 6261 1774

Asia Pacific: Rockwell Automation, 55 Newton Road, #11-01/02 Revenue House, Singapore 307987, Tel: (65) 351 6723, Fax: (65) 355 1733