

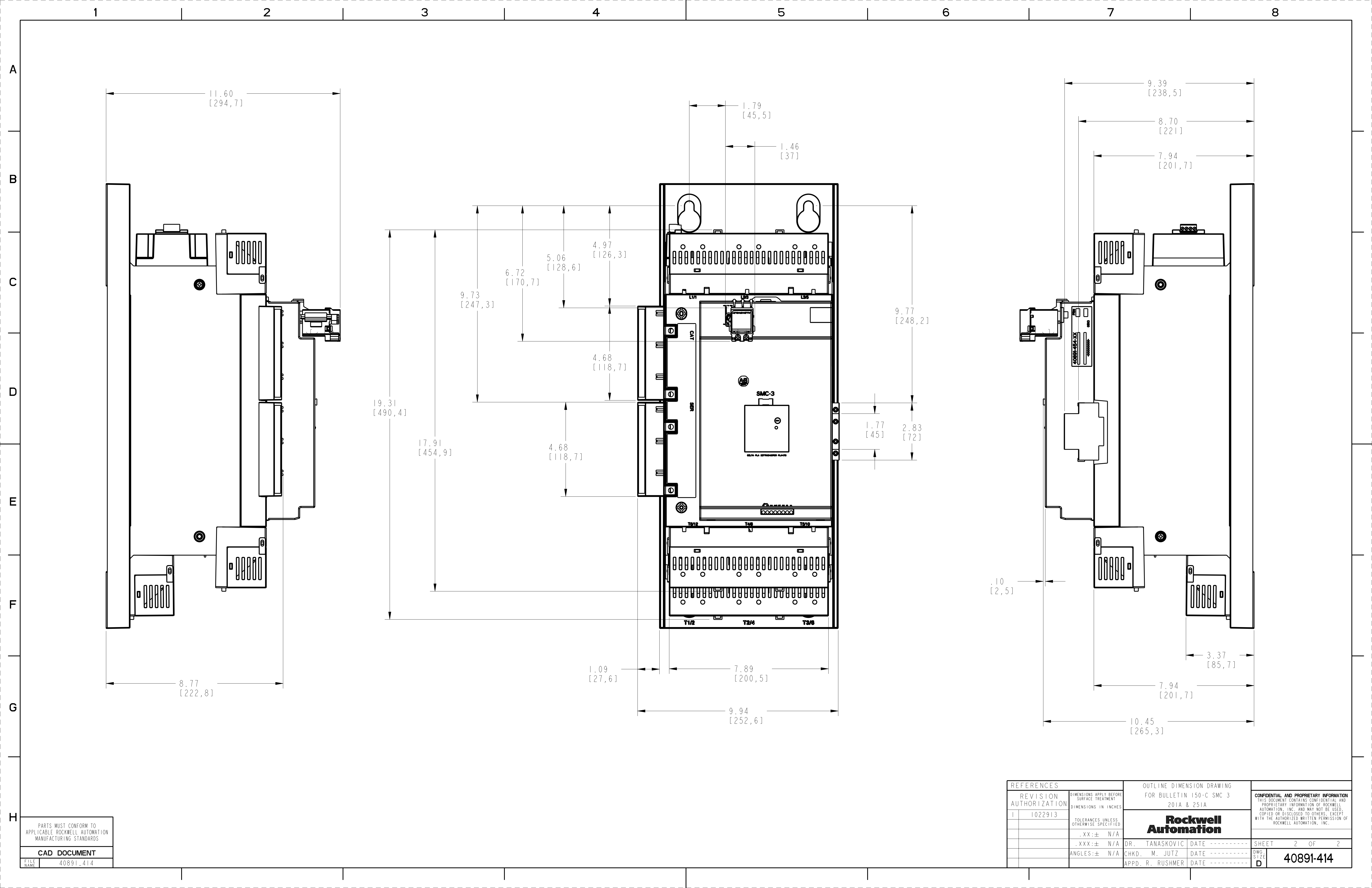
PARTS MUST CONFORM TO APPLICABLE ROCKWELL AUTOMATION MANUFACTURING STANDARDS

CAD DOCUMENT

FILE NAME: 40891_414

NOTE:
 1) DIMENSIONS IN INCHES [MILLIMETERS]
 2) DIMENSIONS ARE NOT TO BE USED FOR MANUFACTURING PURPOSES.

REFERENCES		DIMENSIONS APPLY BEFORE SURFACE TREATMENT		OUTLINE DIMENSION DRAWING FOR BULLETIN 150-C SMC 3 201A & 251A		CONFIDENTIAL AND PROPRIETARY INFORMATION	
REVISION AUTHORIZATION		DIMENSIONS IN INCHES		TOLERANCES UNLESS OTHERWISE SPECIFIED		THIS DOCUMENT CONTAINS CONFIDENTIAL AND PROPRIETARY INFORMATION OF ROCKWELL AUTOMATION, INC. AND MAY NOT BE USED, COPIED OR DISCLOSED TO OTHERS, EXCEPT WITH THE AUTHORIZED WRITTEN PERMISSION OF ROCKWELL AUTOMATION, INC.	
1	1022913	.XX:±	N/A	Rockwell Automation		SHEET 1 OF 2	
		.XXX:±	N/A	DR. TANASKOVIC	DATE 05-01-06	DWG. SIZE	40891-414
		ANGLES:±	N/A	CHKD. M.A. JUTZ	DATE 05-01-06	D	
				APPD. R. RUSHMER	DATE 05-01-06		



PARTS MUST CONFORM TO APPLICABLE ROCKWELL AUTOMATION MANUFACTURING STANDARDS

CAD DOCUMENT

FILE NAME 40891_414

REFERENCES		DIMENSIONS APPLY BEFORE SURFACE TREATMENT		OUTLINE DIMENSION DRAWING FOR BULLETIN 150-C SMC 3 201A & 251A		CONFIDENTIAL AND PROPRIETARY INFORMATION	
REVISION AUTHORIZATION		DIMENSIONS IN INCHES		TOLERANCES UNLESS OTHERWISE SPECIFIED		THIS DOCUMENT CONTAINS CONFIDENTIAL AND PROPRIETARY INFORMATION OF ROCKWELL AUTOMATION, INC. AND MAY NOT BE USED, COPIED OR DISCLOSED TO OTHERS, EXCEPT WITH THE AUTHORIZED WRITTEN PERMISSION OF ROCKWELL AUTOMATION, INC.	
1	1022913	.XX:±	N/A	Rockwell Automation		SHEET	2 OF 2
		.XXX:±	N/A	DR. TANASKOVIC	DATE	DWG. SIZE	40891-414
		ANGLES:±	N/A	CHKD. M. JUTZ	DATE	D	
				APPD. R. RUSHMER	DATE		