

PowerMonitor 5000 USB Driver Installation and Configuration

Catalog Number 1426

Topic	Page
Install Drivers	3
Configure the Connection	5
Browse the PowerMonitor 5000 Web Page by Using the USB Connection	7
Additional Resources	8

The USB Device port can be used to set-up a temporary, point-to-point connection between a personal computer and the PowerMonitor™ 5000 unit. This connection is used for configuration, data monitoring, diagnostics, and maintenance by using the unit's built-in web pages. The USB Device port is a standard USB Mini-B receptacle. You need to install drivers to enable USB communication.

To connect your personal computer to the PowerMonitor 5000 unit, use a standard USB cable with a Type-A and Mini-B male plugs.

Important User Information

Solid-state equipment has operational characteristics differing from those of electromechanical equipment. Safety Guidelines for the Application, Installation and Maintenance of Solid State Controls (publication [SGI-1.1](#) available from your local Rockwell Automation® sales office or online at <http://www.rockwellautomation.com/literature/>) describes some important differences between solid-state equipment and hard-wired electromechanical devices. Because of this difference, and also because of the wide variety of uses for solid-state equipment, all persons responsible for applying this equipment must satisfy themselves that each intended application of this equipment is acceptable.

In no event will Rockwell Automation, Inc. be responsible or liable for indirect or consequential damages resulting from the use or application of this equipment.

The examples and diagrams in this manual are included solely for illustrative purposes. Because of the many variables and requirements associated with any particular installation, Rockwell Automation, Inc. cannot assume responsibility or liability for actual use based on the examples and diagrams.

No patent liability is assumed by Rockwell Automation, Inc. with respect to use of information, circuits, equipment, or software described in this manual.

Reproduction of the contents of this manual, in whole or in part, without written permission of Rockwell Automation, Inc., is prohibited.

Throughout this manual, when necessary, we use notes to make you aware of safety considerations.



WARNING: Identifies information about practices or circumstances that can cause an explosion in a hazardous environment, which may lead to personal injury or death, property damage, or economic loss.



ATTENTION: Identifies information about practices or circumstances that can lead to personal injury or death, property damage, or economic loss. Attentions help you identify a hazard, avoid a hazard, and recognize the consequence.



SHOCK HAZARD: Labels may be on or inside the equipment, for example, a drive or motor, to alert people that dangerous voltage may be present.



BURN HAZARD: Labels may be on or inside the equipment, for example, a drive or motor, to alert people that surfaces may reach dangerous temperatures.

IMPORTANT

Identifies information that is critical for successful application and understanding of the product.

Install Drivers

You can download drivers from

<http://www.ab.com/linked/PEMS/downloads.html>.

Follow the steps listed below to install the USB driver.

1. Connect the PowerMonitor 5000 unit to your computer by using a USB cable and apply power to the power monitor.

The computer detects the new device and prompts you to install the driver.

2. Click 'Yes, this time only' and click Next.



3. Click Install from a list or specific location (Advanced) and click Next.



4. In the Found New Hardware Wizard dialog box, click Browse.



5. Select the folder containing the driver .inf file from the explorer dialog box.

6. Click Next in the previous dialog box.



Wait while the driver installs.



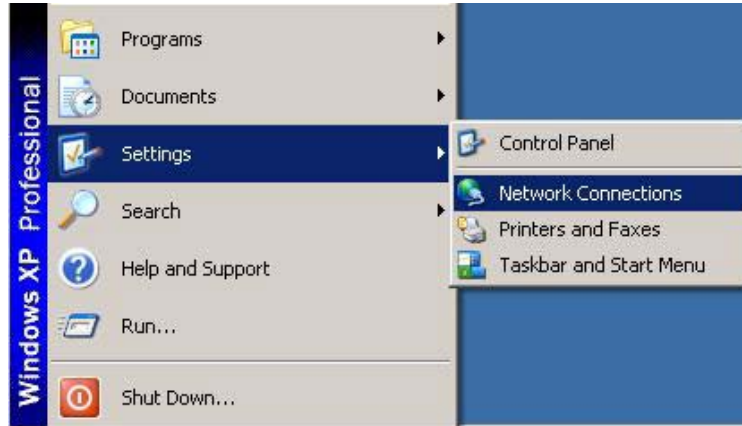
7. Click Finish when the driver installation is complete.

Configure the Connection

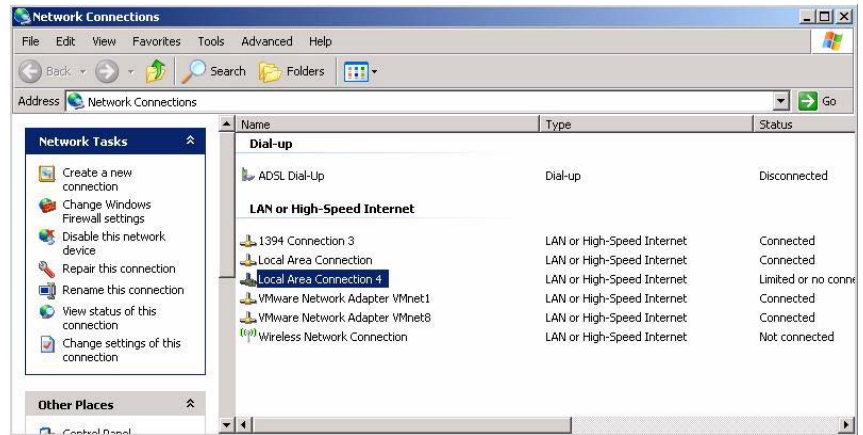
Follow these steps to configure the connection.

1. From the Windows desktop, choose Start > Settings > Network Connections.

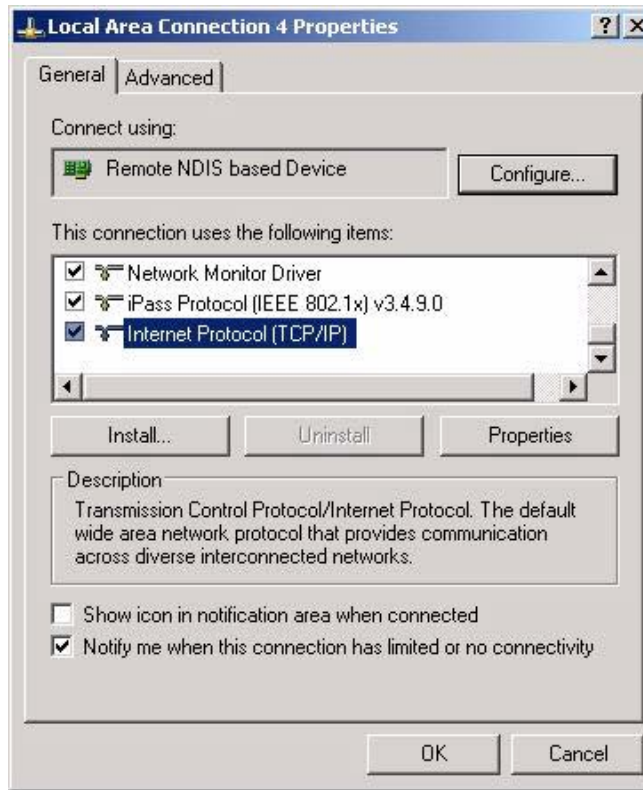
A new Local Area Connection with a Device Name 'Remote NDIS based Device' was added when you installed the driver.



2. Right-click the connection name and choose Properties.

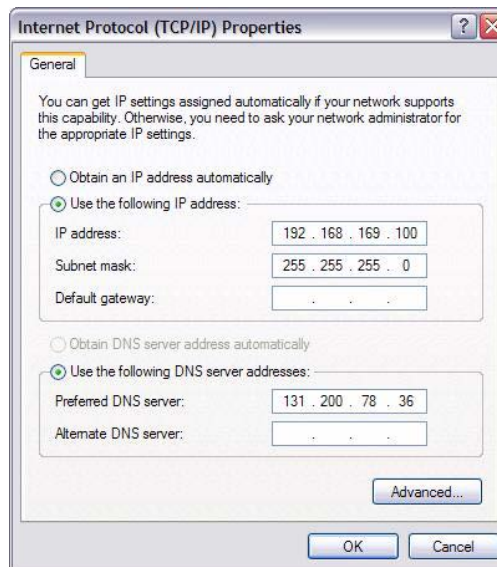


3. Select Internet Protocol (TCP/IP) and click Properties.



4. Click Use the following IP address and type the address 192.168.169.100.

The default subnet mask 255.255.255.0 is correct. The default IP address of the PowerMonitor 5000 unit is 192.168.169.3.



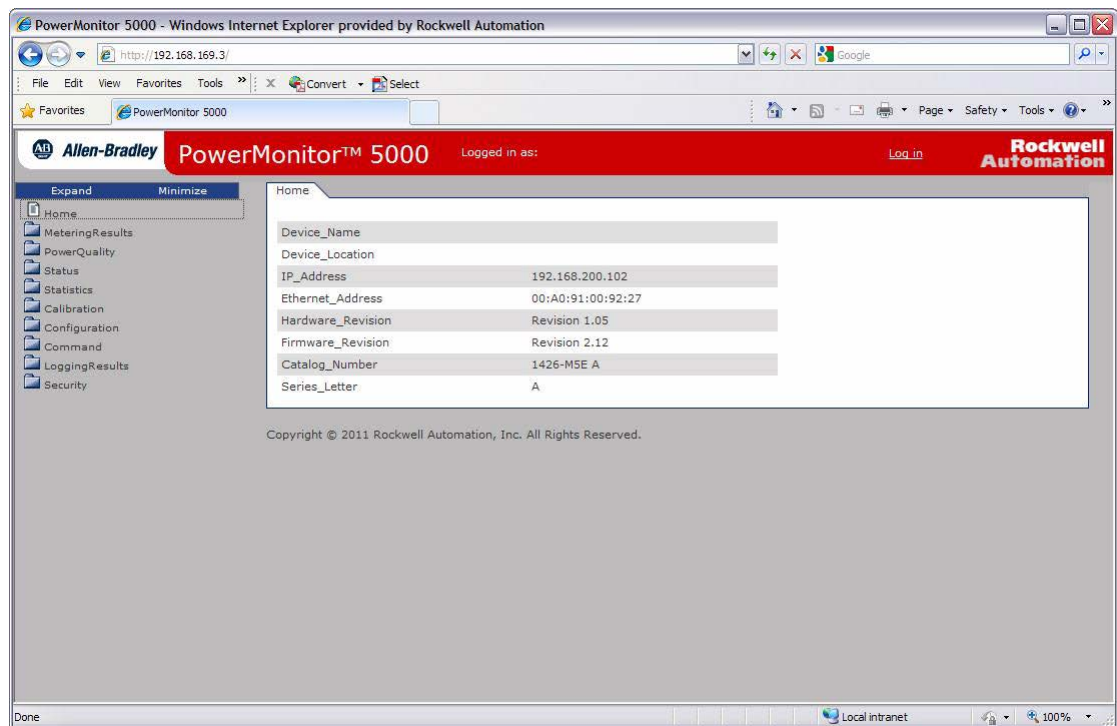
Browse the PowerMonitor 5000 Web Page by Using the USB Connection

Follow these steps to browse the PowerMonitor 5000 unit.

1. Open the Internet Explorer web browser on the computer and browse to the url <http://192.168.169.3>.

The PowerMonitor 5000 web page will display in your browser.

IMPORTANT Your browser must have Allow Scriptlets set to Enable for the applicable security zone for configuration changes to be made to the power monitor by using the web page.



By default the security setting of the power monitor's webpage is disabled.

2. If you would like to enable security, refer to the PowerMonitor 5000 Unit User Manual, publication [1426-UM001](#) for more information.

Additional Resources

These documents contain additional information concerning related products from Rockwell Automation.

Resource	Description
PowerMonitor 5000 Unit User Manual, publication 1426-UM001	Provides information on installing, configuring, and using the PowerMonitor 5000 unit.
Industrial Automation Wiring and Grounding Guidelines, publication 1770-4.1	Provides general guidelines for installing a Rockwell Automation® industrial system.
Product Certifications website, http://www.ab.com	Provides declarations of conformity, certificates, and other certification details.

You can view or download publications at <http://www.rockwellautomation.com/literature/>. To order paper copies of technical documentation, contact your local Allen-Bradley® distributor or Rockwell Automation sales representative.

Allen-Bradley, Rockwell Software, Rockwell Automation, PowerMonitor, and TechConnect are trademarks of Rockwell Automation, Inc.

Trademarks not belonging to Rockwell Automation are property of their respective companies.

Rockwell Otomasyon Ticaret A.Ş., Kar Plaza İş Merkezi E Blok Kat:6 34752 İçerenköy, İstanbul, Tel: +90 (216) 5698400

www.rockwellautomation.com

Power, Control and Information Solutions Headquarters

Americas: Rockwell Automation, 1201 South Second Street, Milwaukee, WI 53204-2496 USA, Tel: (1) 414.382.2000, Fax: (1) 414.382.4444

Europe/Middle East/Africa: Rockwell Automation NV, Pegasus Park, De Kleetlaan 12a, 1831 Diegem, Belgium, Tel: (32) 2 663 0600, Fax: (32) 2 663 0640

Asia Pacific: Rockwell Automation, Level 14, Core F, Cyberport 3, 100 Cyberport Road, Hong Kong, Tel: (852) 2887 4788, Fax: (852) 2508 1846

Publication 1426-IN001A-EN-P - July 2012