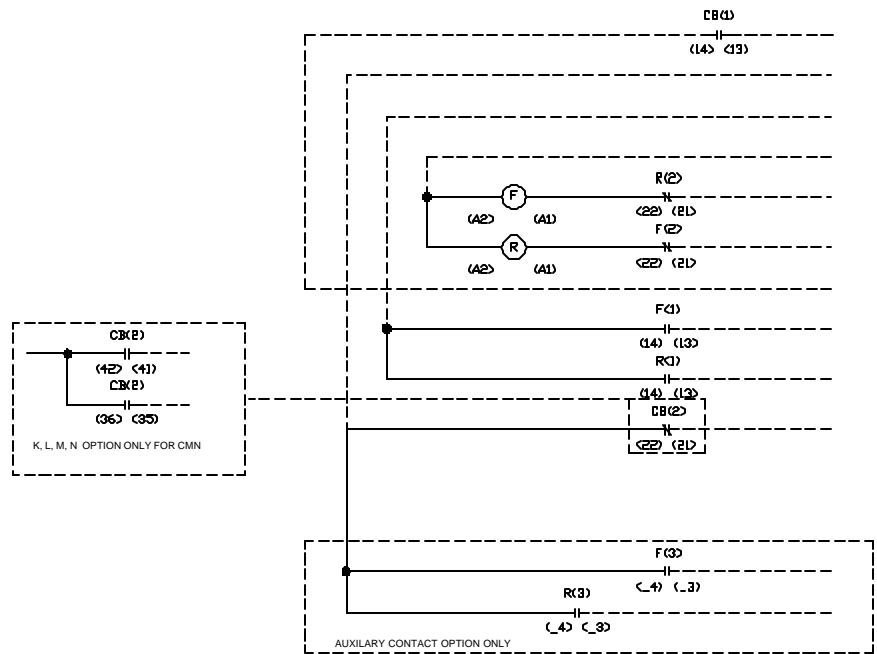
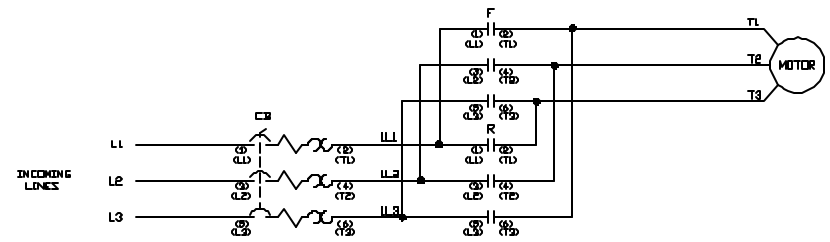
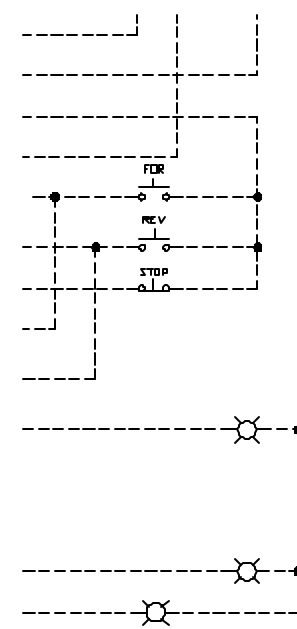


BUL 103 & BUL 107 AUX CONTACTS FOR 140-CMN CIRCUIT BREAKERS					
Last Characters in Cat. No. (103S-KTD2-GC400)		Terminal Markings			
1 st CHAR	2 nd CHAR	Aux Contacts	Trip Contacts	CB (1)	CB (2)
X		--	--	--	--
C		1 NO + 1 NC	--	13-14	21-22
D		2 NO	--	13-14	23-24
C,D	K	1 NO	1 NC (SC) + 1 NC (OL)	13-14	41-42 + 35-36
C,D	L	1 NO	1 NO (SC) + 1 NO (OL)	13-14	43-44 + 37-38
C,D	M	1 NO	1 NO (SC) + 1 NC (OL)	13-14	43-44 + 37-38
C,D	N	1 NO	1 NO (SC) + 1 NO (OL)	13-14	41-42 + 35-36
E	K	1 NC	1 NC (SC) + 1 NC (OL)	13-14	35-36 + 41-42
E	L	1 NC	1 NO (SC) + 1 NO (OL)	13-14	37-38 + 43-44
E	M	1 NC	1 NC (SC) + 1 NO (OL)	13-14	35-36 + 41-42
E	N	1 NC	1 NO (SC) + 1 NC (OL)	13-14	37-38 + 43-44

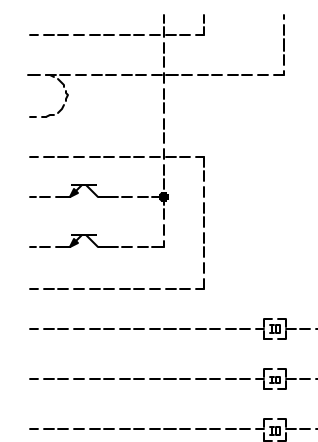
BUL 103 & BUL 107 AUX CONTACTS FOR 140M CIRCUIT BREAKERS					
Last Characters in Cat. No. (103S-ATD2-DB400)		Terminal Markings			
1 st CHAR	2 nd CHAR	Aux Contacts	Trip Contacts	CB (1)	CB (2)
X		--	--	--	--
A	K,L,M,N	1 NC	--	11-12	--
B	K,L,M,N,Q	1 NO	--	13-14	--
C	K,L,M,N,Q	1 NO + 1 NC	--	13-14	21-22
D	K,L,M,N,Q	2 NO	--	13-14	23-24
E	K,L,M,N,Q	2 NC	--	11-12	21-22
R	K,L,M,N,Q	1 NC	1 NO (SC + OL)	11-12	27-28
S	K,L,M,N,Q	1 NO	1 NO (SC + OL)	13-14	27-28



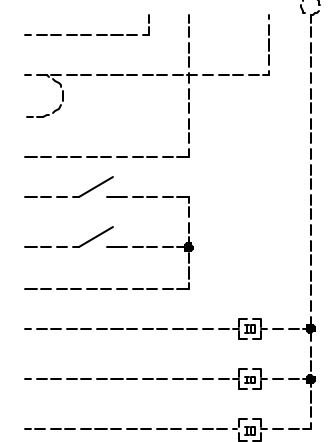
PUSH BUTTON CONTROL



SOURCE CONTROL



DSA DEVICE NET MDSA



NOTE: FIELD WIRING IS NOT VALID WITH CIRCUIT BREAKER AUXILIARY CONTACT CODES A, E OR R

BUL 107 AUX CONTACTS FOR 100C CONTACTORS										
Last Character(s) in Cat. No. (107S-ATA-CA16C)	Description	100-C09..C23					100-C30..C85			
		F(1)*	F(2)**	F(3)	R(1)*	R(2)**	R(3)	F(1)	F(2)**	F(3)
3	1NO + 1NC	13-14	21-22	--	13-14	21-22	--	13-14	21-22	--
7	2NO + 2NC	13-14	21-22	53-54	13-14	21-22	53-54	13-14	21-22	43-44

\* 4th Pole of Contactor  
 \*\* Mechanical / Electrical Interlock

REMOTE WIRING -----  
 FACTORY WIRING -----

REF: 107S-100, 107S-400

Revision		ACAD
Release		Engineering
Dr.	T. J. HENRY	Date
Appr.	J. A. KILBURN	Date
41053-207		Sheet 1 of 1